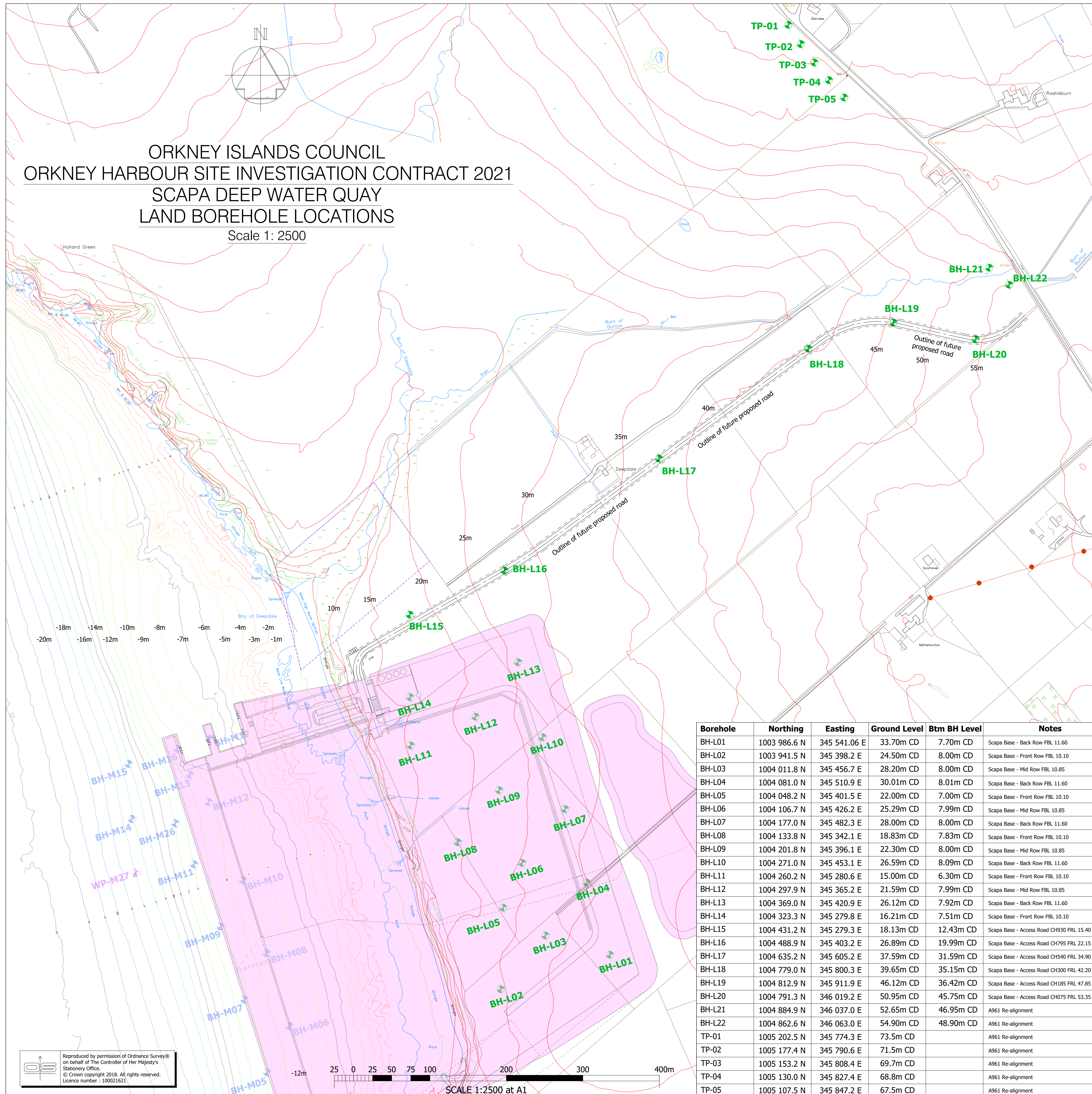


ORKNEY ISLANDS COUNCIL  
 ORKNEY HARBOUR SITE INVESTIGATION CONTRACT 2021  
 SCAPA DEEP WATER QUAY  
 LAND BOREHOLE LOCATIONS

Scale 1: 2500



Borehole	Northing	Easting	Ground Level	Btm BH Level	Notes
BH-L01	1003 986.6 N	345 541.06 E	33.70m CD	7.70m CD	Scapa Base - Back Row FBL 11.60
BH-L02	1003 941.5 N	345 398.2 E	24.50m CD	8.00m CD	Scapa Base - Front Row FBL 10.10
BH-L03	1004 011.8 N	345 456.7 E	28.20m CD	8.00m CD	Scapa Base - Mid Row FBL 10.85
BH-L04	1004 081.0 N	345 510.9 E	30.01m CD	8.01m CD	Scapa Base - Back Row FBL 11.60
BH-L05	1004 048.2 N	345 401.5 E	22.00m CD	7.00m CD	Scapa Base - Front Row FBL 10.10
BH-L06	1004 106.7 N	345 426.2 E	25.29m CD	7.99m CD	Scapa Base - Mid Row FBL 10.85
BH-L07	1004 177.0 N	345 482.3 E	28.00m CD	8.00m CD	Scapa Base - Back Row FBL 11.60
BH-L08	1004 133.8 N	345 342.1 E	18.83m CD	7.83m CD	Scapa Base - Front Row FBL 10.10
BH-L09	1004 201.8 N	345 396.1 E	22.30m CD	8.00m CD	Scapa Base - Mid Row FBL 10.85
BH-L10	1004 271.0 N	345 453.1 E	26.59m CD	8.09m CD	Scapa Base - Back Row FBL 11.60
BH-L11	1004 260.2 N	345 280.6 E	15.00m CD	6.30m CD	Scapa Base - Front Row FBL 10.10
BH-L12	1004 297.9 N	345 365.2 E	21.59m CD	7.99m CD	Scapa Base - Mid Row FBL 10.85
BH-L13	1004 369.0 N	345 420.9 E	26.12m CD	7.92m CD	Scapa Base - Back Row FBL 11.60
BH-L14	1004 323.3 N	345 279.8 E	16.21m CD	7.51m CD	Scapa Base - Front Row FBL 10.10
BH-L15	1004 431.2 N	345 279.3 E	18.13m CD	12.43m CD	Scapa Base - Access Road CH930 FRL 15.40
BH-L16	1004 488.9 N	345 403.2 E	26.89m CD	19.99m CD	Scapa Base - Access Road CH795 FRL 22.15
BH-L17	1004 635.2 N	345 605.2 E	37.59m CD	31.59m CD	Scapa Base - Access Road CH540 FRL 34.90
BH-L18	1004 779.0 N	345 800.3 E	39.65m CD	35.15m CD	Scapa Base - Access Road CH300 FRL 42.20
BH-L19	1004 812.9 N	345 911.9 E	46.12m CD	36.42m CD	Scapa Base - Access Road CH185 FRL 47.85
BH-L20	1004 791.3 N	346 019.2 E	50.95m CD	45.75m CD	Scapa Base - Access Road CH075 FRL 53.35
BH-L21	1004 488.9 N	346 037.0 E	52.65m CD	46.95m CD	A961 Re-alignment
BH-L22	1004 862.6 N	346 063.0 E	54.90m CD	48.90m CD	A961 Re-alignment
TP-01	1005 202.5 N	345 774.3 E	73.5m CD		A961 Re-alignment
TP-02	1005 177.4 N	345 790.6 E	71.5m CD		A961 Re-alignment
TP-03	1005 153.2 N	345 808.4 E	69.7m CD		A961 Re-alignment
TP-04	1005 130.0 N	345 827.4 E	68.8m CD		A961 Re-alignment
TP-05	1005 107.5 N	345 847.2 E	67.5m CD		A961 Re-alignment

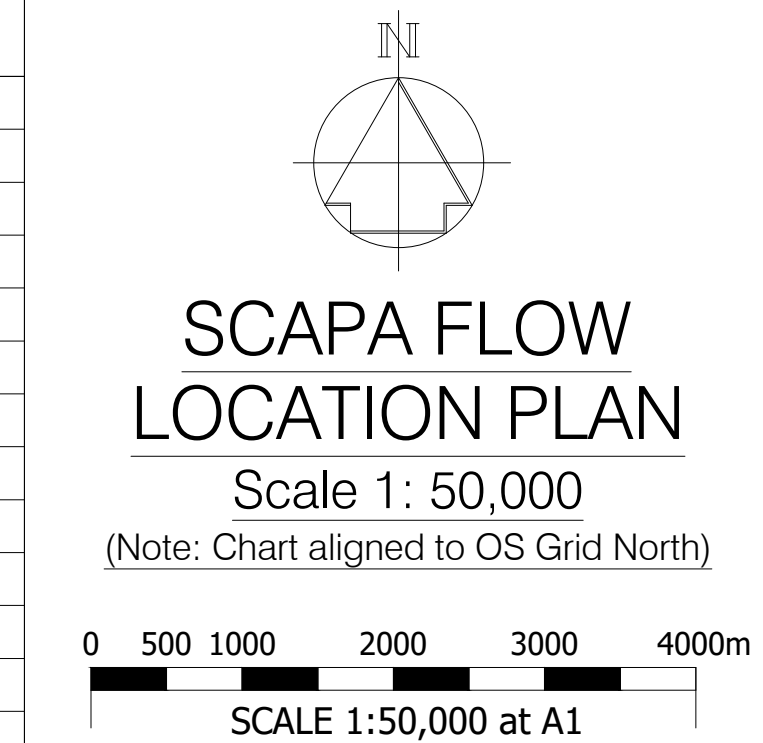
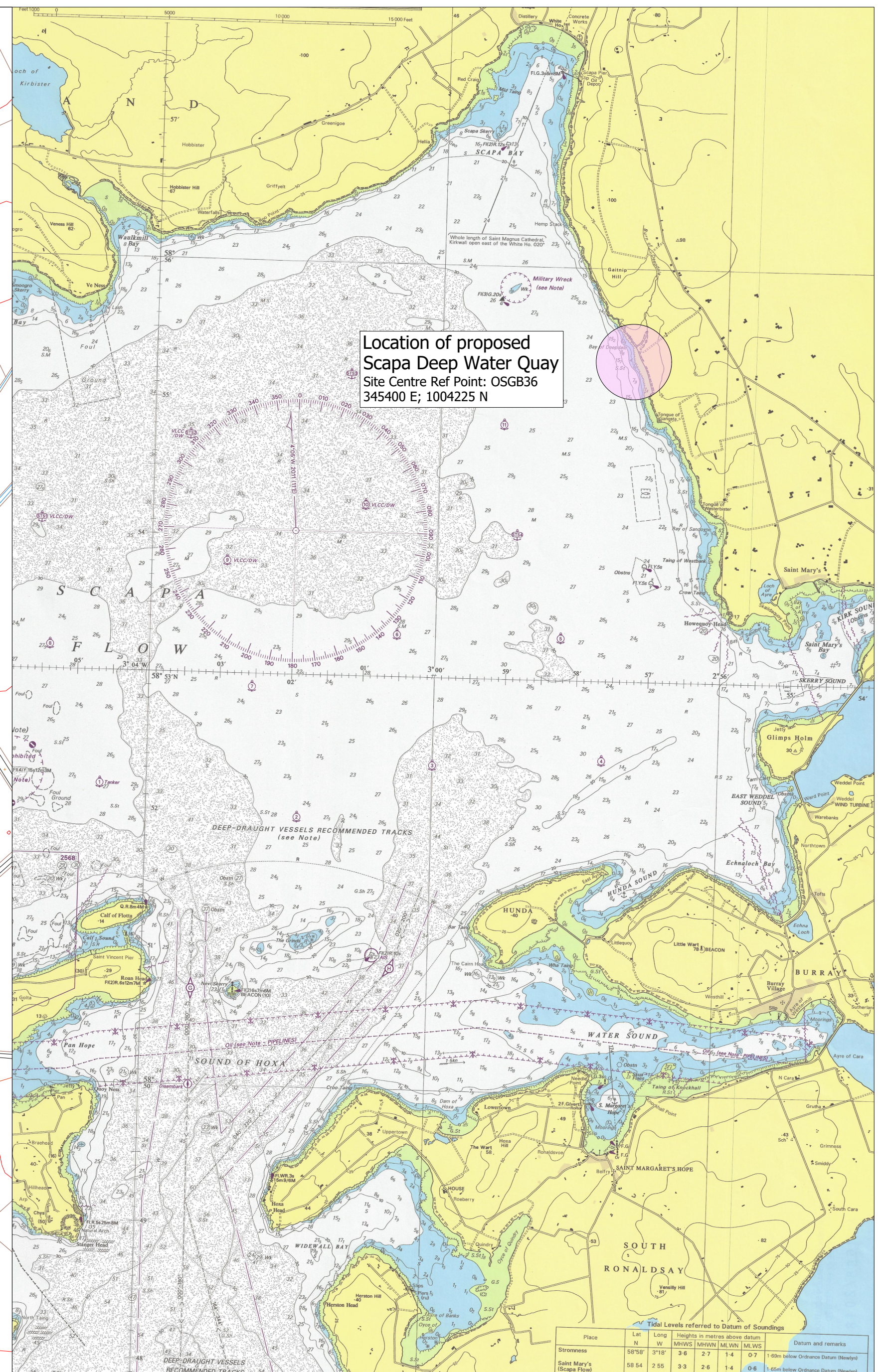


Chart Datum (Scapa Flow)	Ordnance Datum (Newlyn)	Quay Heights and Tide Data Scapa Deep Water Quay
+7.00m	+5.31m	Quay Edge Level
+3.60m	+1.91m	Mean High Water Spring Tides
+1.69m	0.00m	Ordnance Datum (Newlyn)
+0.70m	-0.99m	Mean Low Water Spring Tides
0.00m	-1.69m	Chart Datum (Scapa Flow)
-5.00m	-6.69m	
-10.00m	-11.69m	
-15.00m	-16.69m	
-20.00m	-21.69m	

REV	DATE	REVISION	DRN	CHK
-	16.05.2023	E.I.A. Application Issue	JJM	SSJ

THIS DRAWING IS COPYRIGHT. DO NOT SCALE FROM THIS DRAWING.



Scapa Deep Water Quay  
 Site Investigation (2021)  
 Land Borehole Layout

**Arch Henderson** 1919  
 Civil Engineers  
 Structural Engineers  
 Architects  
 CDM Co-ordinators  
 Geotechnical services  
 Environmental services

Stewart Building, Lerwick, Shetland, ZE1 0LL  
 Tel: 01595 695512  
 www.arch-henderson.co.uk - email: lerwick@arch-henderson.co.uk

Aberdeen, Dundee, Glasgow, Lerwick, Inverness, Thurso, Stromness, Southampton, Falkland Islands

DRAWN	DATE	CHECKED	APPROVED
PRN	May 2023	SSJ	APS

SCALE: (A1) As Shown DRAWING STATUS: EIA Application

DRAWING No: 202042/EIA- 106 REV: -

Reproduced by permission of Ordnance Survey® on behalf of The Controller of Her Majesty's Stationery Office.  
 © Crown copyright 2018. All rights reserved.  
 Licence number: 100021621