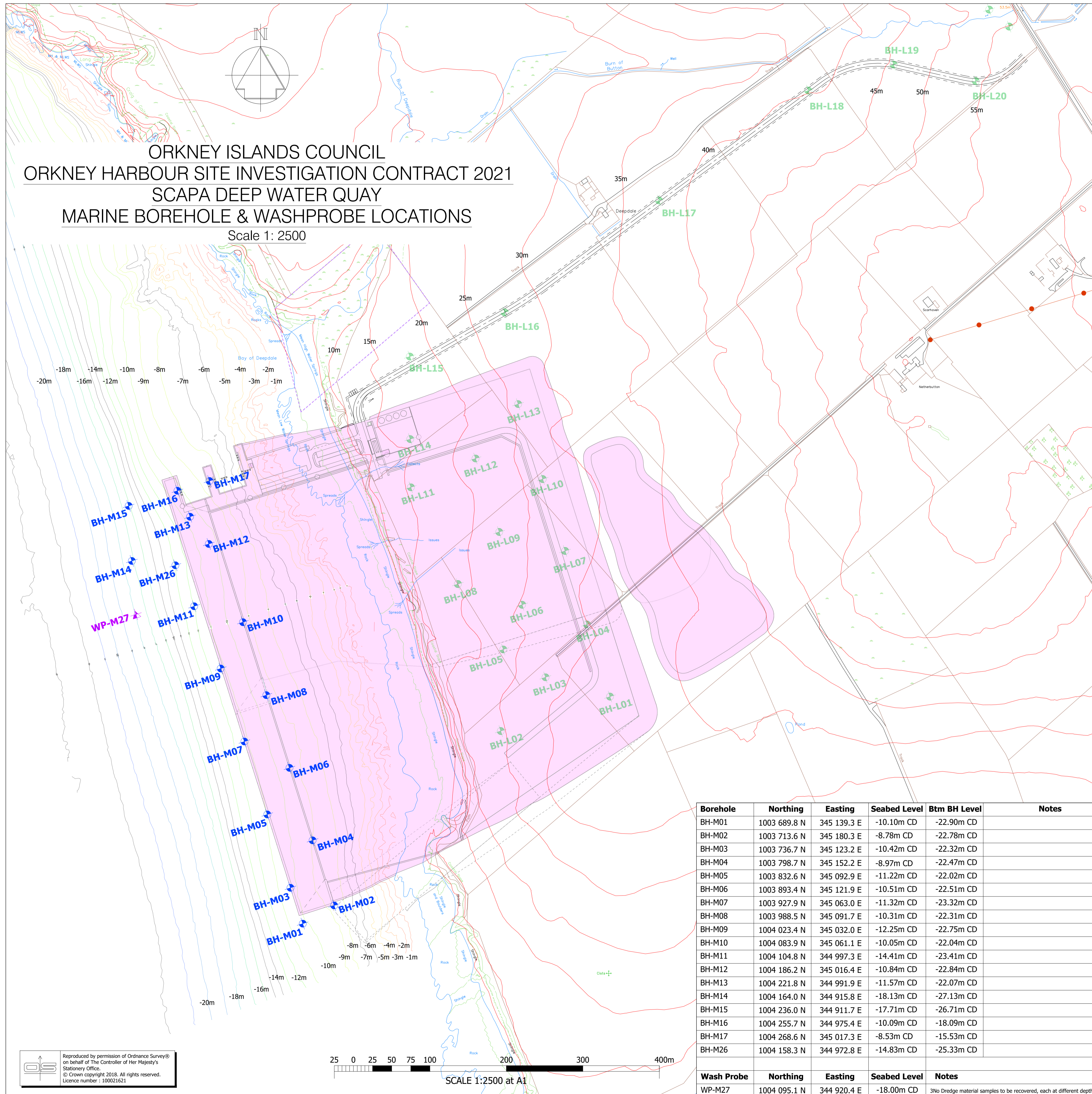


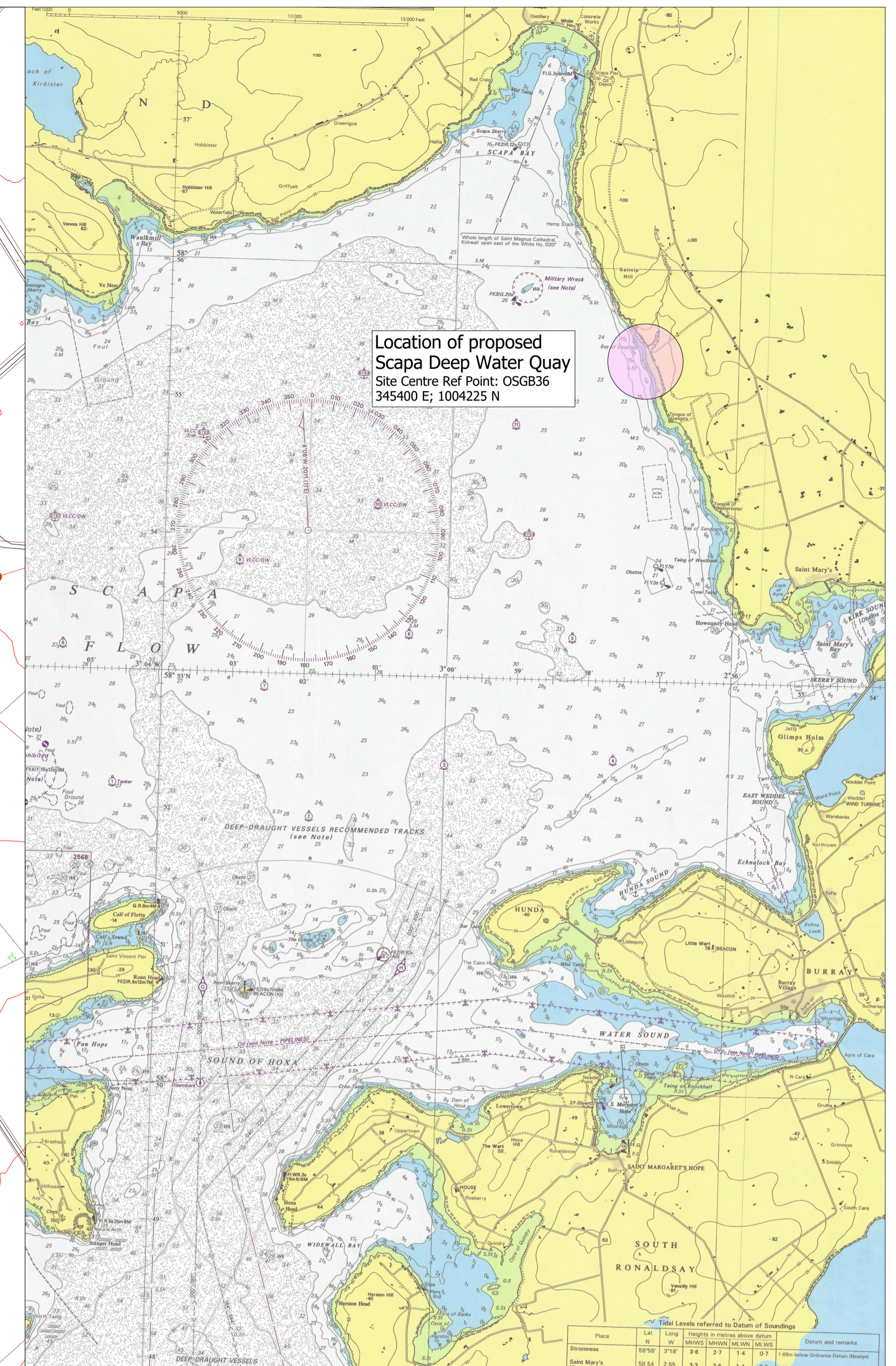
ORKNEY ISLANDS COUNCIL  
 ORKNEY HARBOUR SITE INVESTIGATION CONTRACT 2021  
 SCAPA DEEP WATER QUAY  
 MARINE BOREHOLE & WASHPROBE LOCATIONS

Scale 1: 2500



Borehole	Northing	Easting	Seabed Level	Btm BH Level	Notes
BH-M01	1003 689.8 N	345 139.3 E	-10.10m CD	-22.90m CD	
BH-M02	1003 713.6 N	345 180.3 E	-8.78m CD	-22.78m CD	
BH-M03	1003 736.7 N	345 123.2 E	-10.42m CD	-22.32m CD	
BH-M04	1003 798.7 N	345 152.2 E	-8.97m CD	-22.47m CD	
BH-M05	1003 832.6 N	345 092.9 E	-11.22m CD	-22.02m CD	
BH-M06	1003 893.4 N	345 121.9 E	-10.51m CD	-22.51m CD	
BH-M07	1003 927.9 N	345 063.0 E	-11.32m CD	-23.32m CD	
BH-M08	1003 988.5 N	345 091.7 E	-10.31m CD	-22.31m CD	
BH-M09	1004 023.4 N	345 032.0 E	-12.25m CD	-22.75m CD	
BH-M10	1004 083.9 N	345 061.1 E	-10.05m CD	-22.04m CD	
BH-M11	1004 104.8 N	344 997.3 E	-14.41m CD	-23.41m CD	
BH-M12	1004 186.2 N	345 016.4 E	-10.84m CD	-22.84m CD	
BH-M13	1004 221.8 N	344 991.9 E	-11.57m CD	-22.07m CD	
BH-M14	1004 164.0 N	344 915.8 E	-18.13m CD	-27.13m CD	
BH-M15	1004 236.0 N	344 911.7 E	-17.71m CD	-26.71m CD	
BH-M16	1004 255.7 N	344 975.4 E	-10.09m CD	-18.09m CD	
BH-M17	1004 268.6 N	345 017.3 E	-8.53m CD	-15.53m CD	
BH-M26	1004 158.3 N	344 972.8 E	-14.83m CD	-25.33m CD	

Wash Probe	Northing	Easting	Seabed Level	Notes
WP-M27	1004 095.1 N	344 920.4 E	-18.00m CD	3No Dredge material samples to be recovered, each at different depths



SCAPA FLOW  
 LOCATION PLAN

Scale 1: 50,000  
 (Note: Chart aligned to OS Grid North)

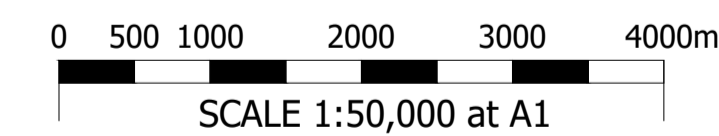
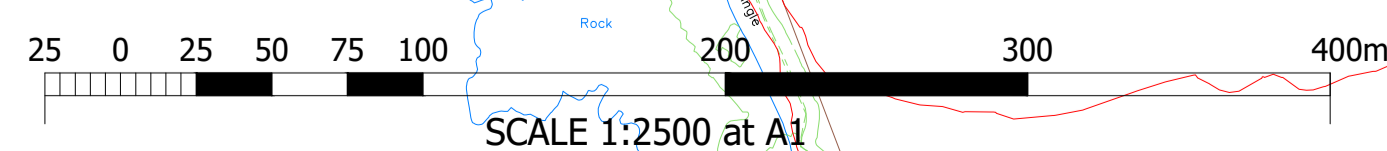


Chart Datum (Scapa Flow)	Ordnance Datum (Newlyn)	Quay Heights and Tide Data Scapa Deep Water Quay
+7.00m	+5.31m	Quay Edge Level
+3.60m	+1.91m	Mean High Water Spring Tides
+1.69m	0.00m	Ordnance Datum (Newlyn)
+0.70m	-0.99m	Mean Low Water Spring Tides
0.00m	-1.69m	Chart Datum (Scapa Flow)
-5.00m	-6.69m	
-10.00m	-11.69m	
-15.00m	-16.69m	
-20.00m	-21.69m	

Reproduced by permission of Ordnance Survey® on behalf of The Controller of Her Majesty's Stationery Office.  
 © Crown copyright 2018. All rights reserved.  
 Licence number : 100021621



Location of proposed  
 Scapa Deep Water Quay  
 Site Centre Ref Point: OSGB36  
 345400 E; 1004225 N

REV	DATE	REVISION	DRN	CHK
-	16.05.2023	E.I.A. Application Issue	JJM	SSJ

THIS DRAWING IS COPYRIGHT . DO NOT SCALE FROM THIS DRAWING.



Scapa Deep Water Quay  
 Site Investigation (2021)  
 Marine Borehole & Wash Probe Layout

**Arch Henderson** 1919  
 Civil Engineers  
 Structural Engineers  
 Architects  
 CDM Co-ordinators  
 Geotechnical services  
 Environmental services

Stewart Building, Lerwick, Shetland, ZE1 0LL.  
 Tel : 01955 695512  
 www.arch-henderson.co.uk - email : lerwick@arch-henderson.co.uk

Aberdeen, Dundee, Glasgow, Lerwick, Inverness, Thurso, Stromness, Southampton, Falkland Islands

DRAWN	DATE	CHECKED	APPROVED
PRN	May 2023	SSJ	APS

SCALE: (A1)  
 As Shown

DRAWING STATUS:  
 EIA Application

DRAWING No : 202042/EIA- 105  
 REV: -