

Chart Datum (Kirkwall)	Ordnance Datum (Newlyn)	Quay Heights and Tide Data Hatston Pier, Kirkwall
+6.40m	+5.00m	Quay Edge Level
+3.00m	+1.60m	Mean High Water Spring Tides
+1.40m	0.00m	Ordnance Datum (Newlyn)
+0.60m	-0.80m	Mean Low Water Spring Tides
0.00m	-1.40m	Chart Datum (Kirkwall)
-5.00m	-6.40m	
-7.50m	-8.90m	
-10.00m	-11.40m	

2001 Site Investigation
Carried out by Fugro Ltd (Project No. 14513)
May 2001

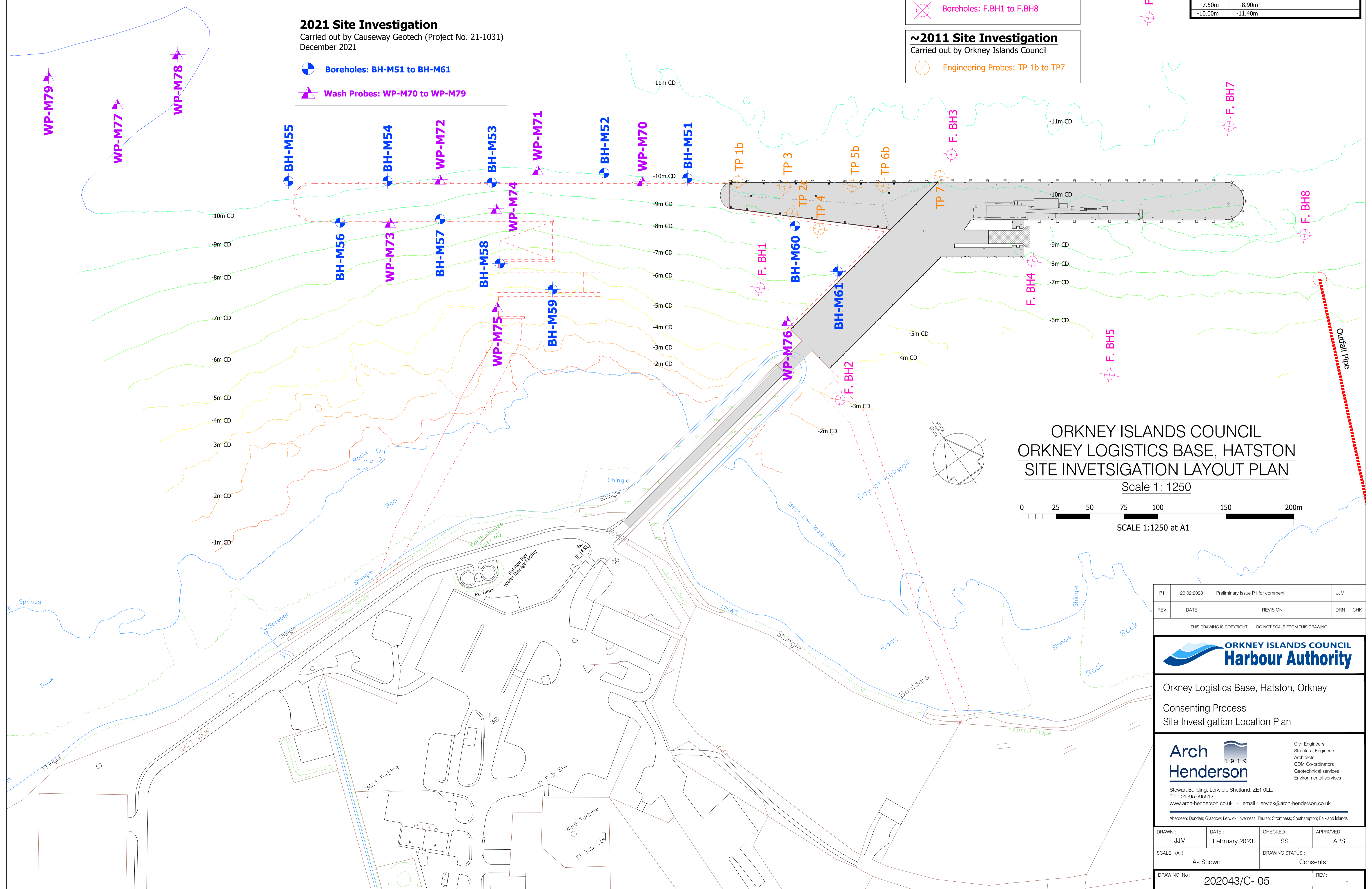
⊗ Boreholes: F.BH1 to F.BH8

~2011 Site Investigation
Carried out by Orkney Islands Council

⊗ Engineering Probes: TP 1b to TP7

2021 Site Investigation
Carried out by Causeway Geotech (Project No. 21-1031)
December 2021

⊗ Boreholes: BH-M51 to BH-M61
⊗ Wash Probes: WP-M70 to WP-M79

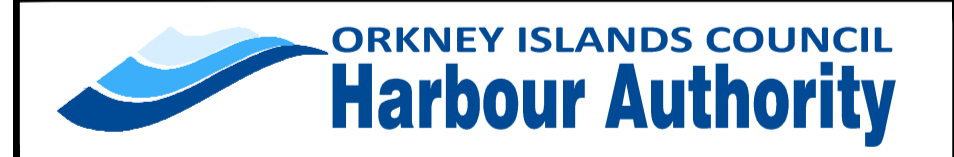


ORKNEY ISLANDS COUNCIL
ORKNEY LOGISTICS BASE, HATSTON
SITE INVETSIGATION LAYOUT PLAN

Scale 1: 1250
0 25 50 75 100 150 200m
SCALE 1:1250 at A1

REV	DATE	REVISION	DRN	CHK
P1	20.02.2023	Preliminary Issue P1 for comment	JJM	

THIS DRAWING IS COPYRIGHT . DO NOT SCALE FROM THIS DRAWING.



Orkney Logistics Base, Hatston, Orkney
Consenting Process
Site Investigation Location Plan

Arch Henderson 1919
Civil Engineers
Structural Engineers
Architects
CDM Co-ordinators
Geotechnical services
Environmental services
Stewart Building, Lerwick, Shetland. ZE1 0LL.
Tel: 01595 695512
www.arch-henderson.co.uk - email: lerwick@arch-henderson.co.uk
Aberdeen, Dundee, Glasgow, Lerwick, Inverness, Thurso, Stromness, Southampton, Falkland Islands

DRAWN	DATE	CHECKED	APPROVED
JJM	February 2023	SSJ	APS

SCALE: (A1) As Shown DRAWING STATUS: Consents

DRAWING No: 202043/C- 05 REV: -