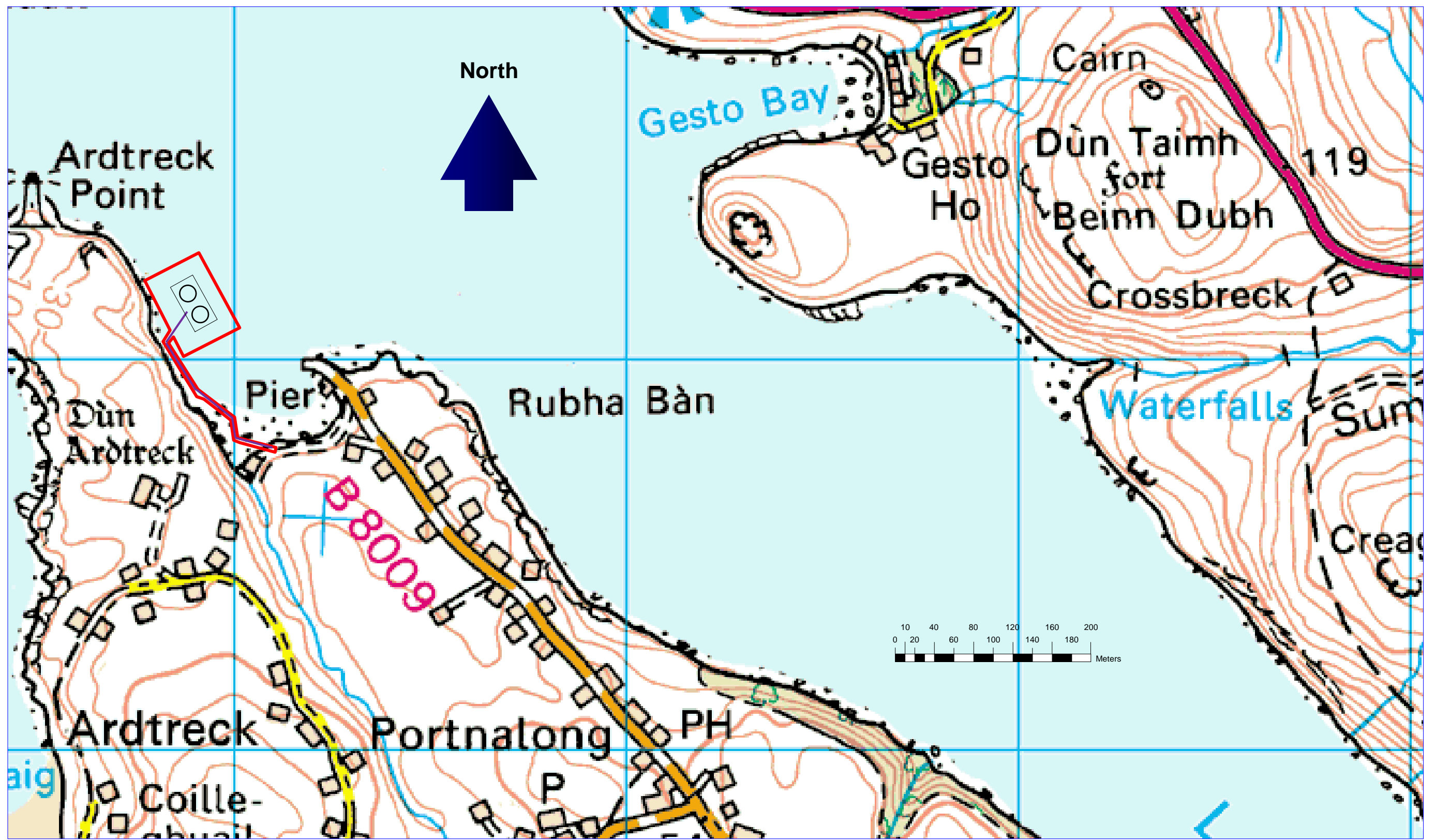




PORTNALONG: LOCH HARPORT, ISLE OF SKYE	Key:	Not to scale	27/08/2015	DB	DB	0001	Final
GENERAL VIEW: ORDNANCE SURVEY MAP		Scale	Date	Drawn	Checked	Revision No.	Status
Figure 1		General view and location of Loch Harport.					



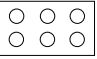

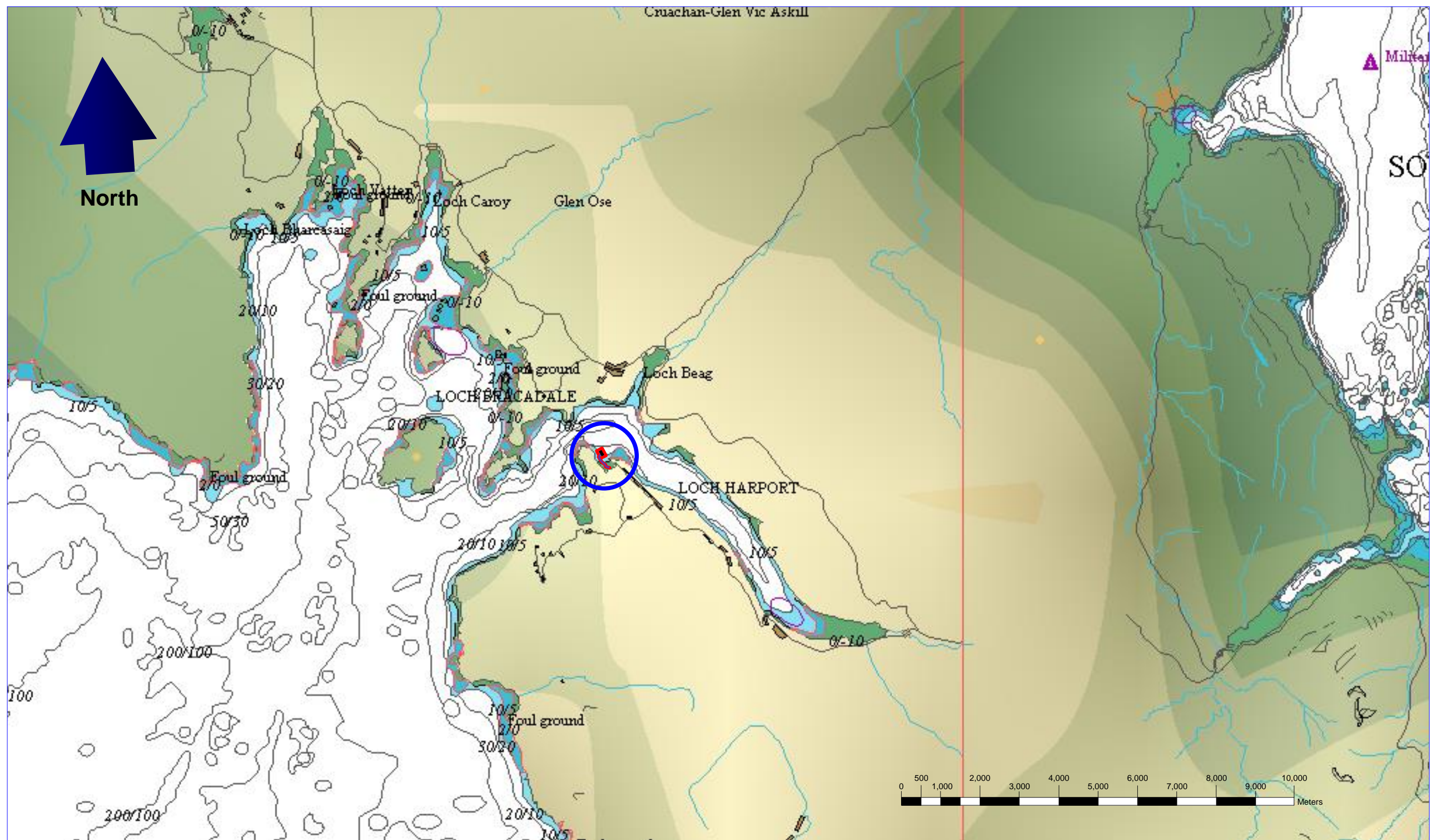
PORTNALONG: ARDTRECK RESERVOIR PENS LOCATION PLAN: ORDNANCE SURVEY MAP	Key:	 Cages	1:10,000	27/08/2015	DB	DB	0002	Final
	 Mooring Containment Area		Scale	Date	Drawn	Checked	Revision	Status

Figure 2 Detailed view of Portnalong proposal.

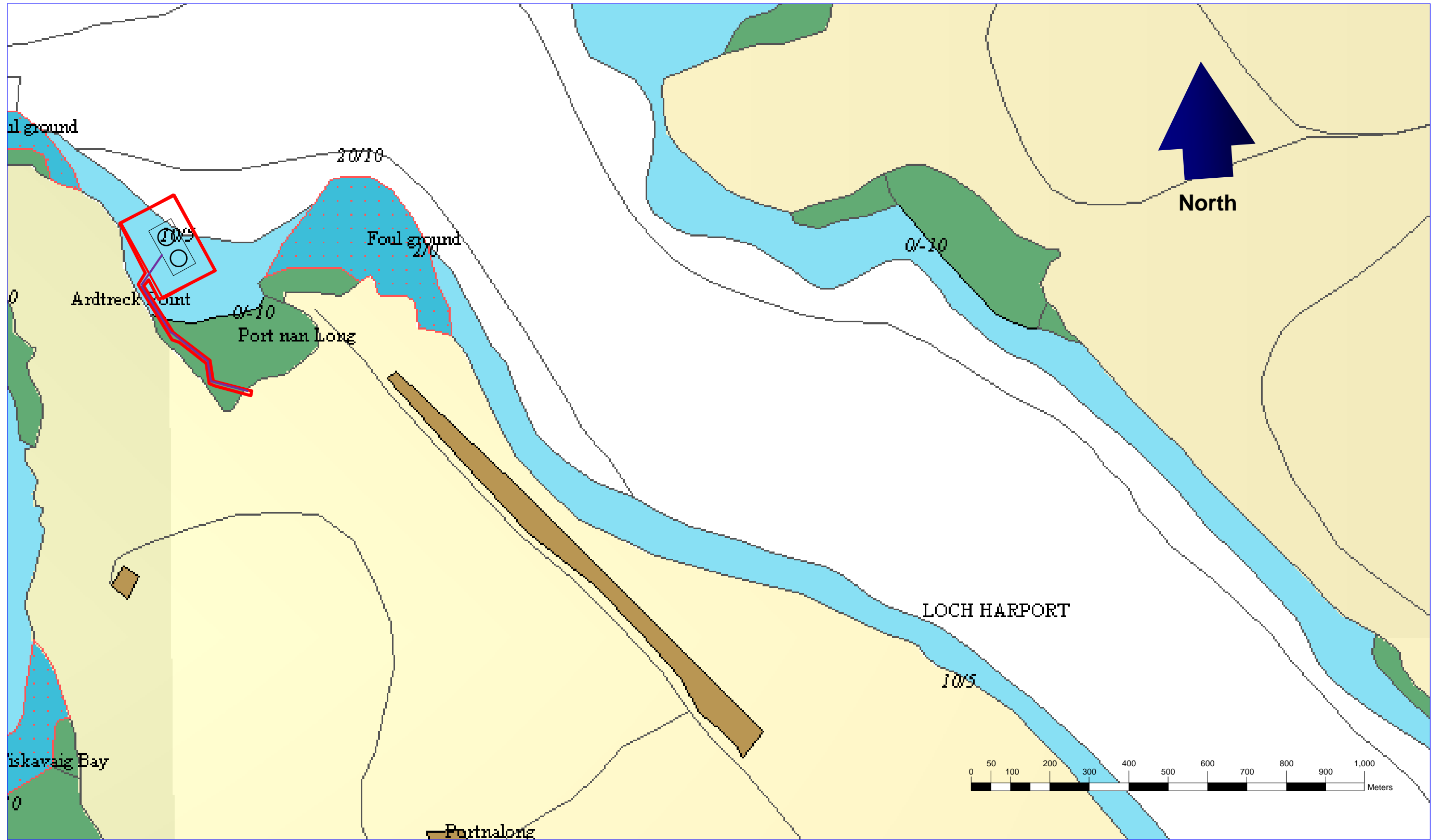


PORTNALONG: ARDTRECK RESERVOIR PENS
ADMIRALTY CHART EXTRACT OF SITE

Key:
 Site Location

1:100,000	27/08/2015	DB	DB	0003	Final
Scale	Date	Drawn	Checked	Revision No.	Status

Figure 3 General view of proposed area.




PORTNALONG: ARDTRECK RESERVOIR PENS
ADMIRALTY CHART EXTRACT OF SITE

Figure 4

General view of Portnalong.
 Proposed cages and moorings.

Key:

 Mooring Containment Area

 Proposed Cages

1:10,000

Scale

27/08/2015

Date

DB

Drawn

DB

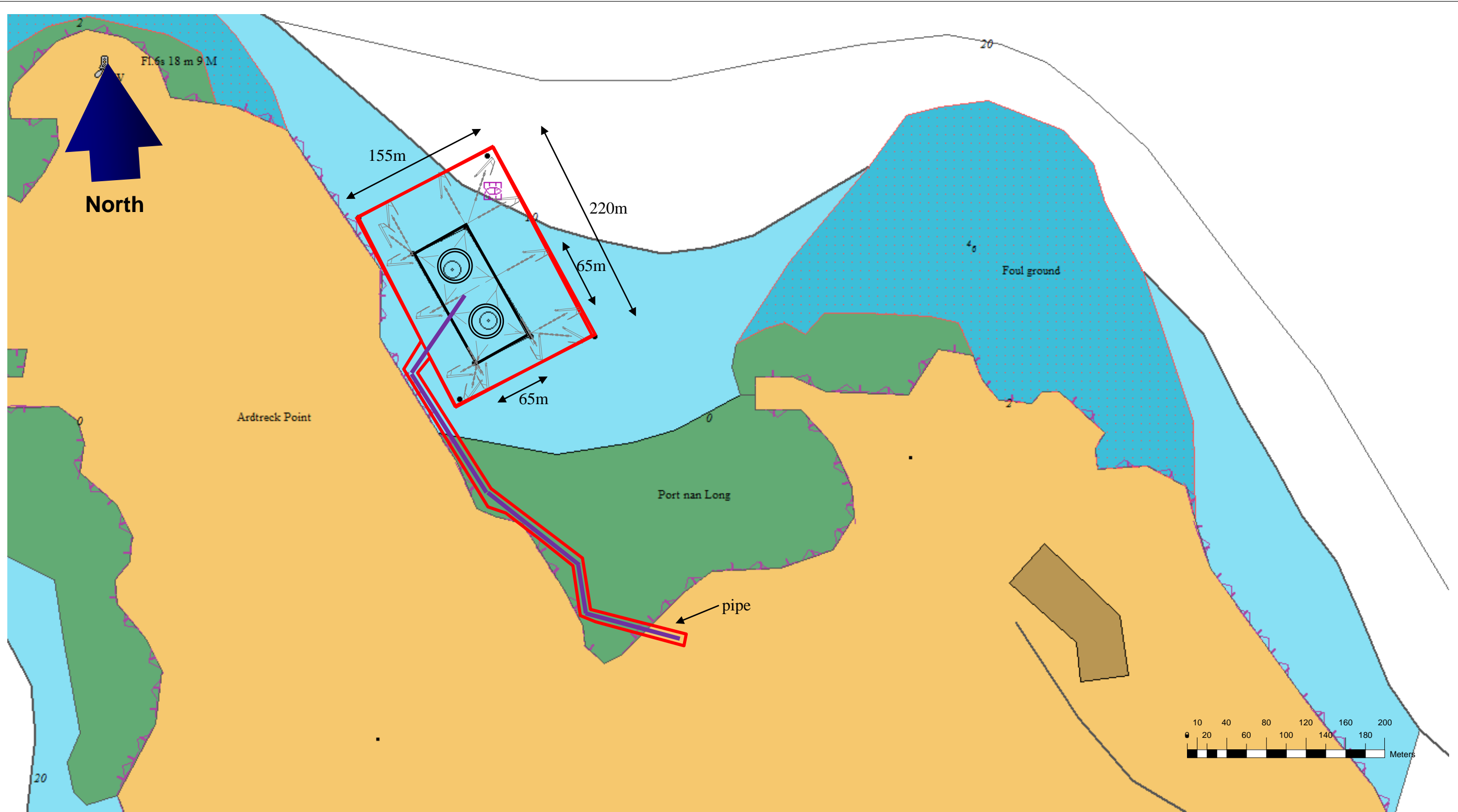
Checked

0003

Revision

Final

Status





PORTNALONG: ARDTRECK RESERVOIR PENS

SITE PLAN

Figure 5 Detailed illustration of cages and moorings. 2 circular plastic cages 100m circumference.

Key:

-  Mooring rope and anchor
-  Mooring Containment Area

1:4,000	27/08/2015	DB	DB	0003	Final
Scale	Date	Drawn	Checked	Revision	Status

Co-ordinates

Site Mid Coordinate

57° 20.253'N 006° 25.454'W

N836111 E133872

Cage Grid Co-ordinates

NE: 57° 20.289'N 006° 25.458'W

N836178 E133876

NW: 57° 20.274'N 006° 25.514'W

N836153 E133818

SE: 57° 20.227'N 006° 25.389'W

N836058 E133938

SW: 57° 20.212'N 006° 25.449'W

N836035 E133876

Mooring Co-ordinates

NE: 57° 20.330'N 006° 25.435'W

N836252 E133904

NW: 57° 20.295'N 006° 25.571'W

N836196 E133764

SE: 57° 20.228'N 006° 25.326'W

N836056 E134001

SW: 57° 20.194'N 006° 25.457'W

N836002 E133866

South End of Pipe

57° 20.068'N 006° 25.245'W

N835747 E134065