

·Figure 4: West Loch Tarbert (Soay Sound) existing layout, including feed barge, pen grid (75 x 75 m).

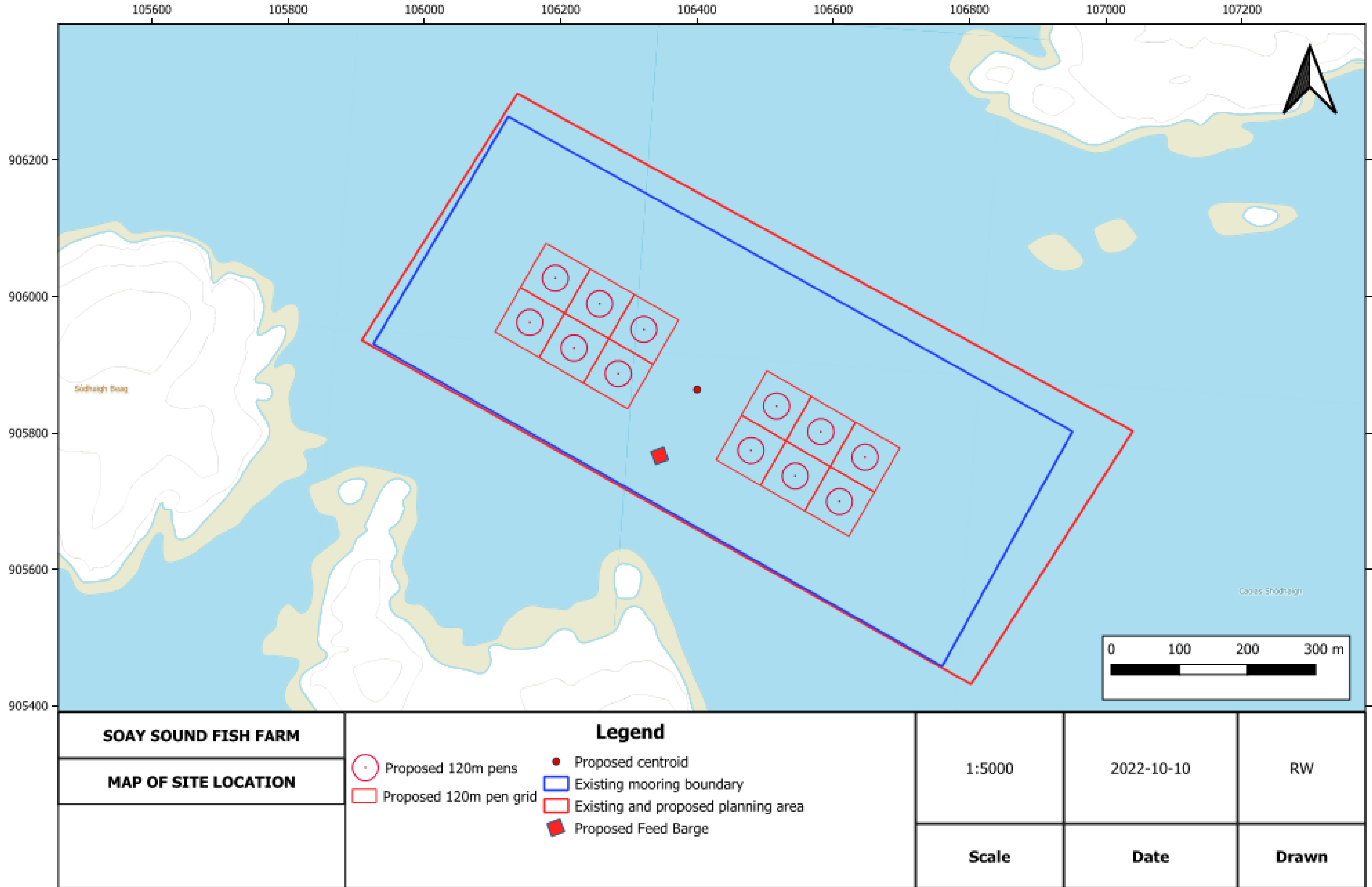


Figure 6: West Loch Tarbert (Soay Sound) proposed layouts including feed barge (pen grid: 75 x75 m).

EXISTING WEST LOCH TARBERT SITE COORDINATES

SITE CENTRE

N: 905844.00 E: 106433.12 57°56'41"N 006°57'47"W

PLANNING BOUNDARY COORDINATES:

N: 906297.430 E: 106136.450 57°56'55"N 006°58'07"W
N: 905802.533 E: 107039.755 57°56'41"N 006°57'10"W
N: 905431.352 E: 106802.216 57°56'29"N 006°57'23"W
N: 905935.396 E: 105908.120 57°56'43"N 006°58'19"W

MOORING BOUNDARY COORDINATES:

N: 906263.645 E: 106123.110 57°56'54"N 006°58'08"W
N: 905801.822 E: 106951.338 57°56'41"N 006°57'16"W
N: 905457.585 E: 106759.905 57°56'30"N 006°57'26"W
N: 905930.138 E: 105925.162 57°56'43"N 006°58'18"W

PEN CENTRES:

N: 906028.15 E: 106193.01 57°56'47"N 006°58'03"W
N: 905925.54 E: 106219.85 57°56'43"N 006°58'01"W
N: 905990.27 E: 106257.73 57°56'46"N 006°57'59"W
N: 905887.65 E: 106284.58 57°56'42"N 006°57'56"W
N: 905952.38 E: 106322.46 57°56'45"N 006°57'54"W
N: 905849.77 E: 106349.30 57°56'41"N 006°57'52"W
N: 905914.49 E: 106387.19 57°56'43"N 006°57'50"W
N: 905963.42 E: 106155.12 57°56'44"N 006°58'05"W
N: 905840.08 E: 106517.99 57°56'41"N 006°57'42"W
N: 905737.47 E: 106544.84 57°56'38"N 006°57'40"W
N: 905802.20 E: 106582.72 57°56'40"N 006°57'38"W
N: 905699.58 E: 106609.56 57°56'37"N 006°57'36"W
N: 905764.31 E: 106647.45 57°56'39"N 006°57'34"W
N: 905661.70 E: 106674.29 57°56'36"N 006°57'32"W
N: 905726.43 E: 106712.18 57°56'38"N 006°57'30"W
N: 905775.36 E: 106480.11 57°56'39"N 006°57'44"W

FEED BARGE:

N: 905751.95 E: 106371.64 57°56'38"N 006°57'51"W

PROPOSED CHANGES WEST LOCH TARBERT SITE COORDINATES

SITE CENTRE

N: 905863.49	E: 106400.53	57°56'42"N	006°57'49"W
--------------	--------------	------------	-------------

PEN CENTRES:

N: 905961.70	E: 106154.67	57°56'44"N	006°58'05"W
N: 906026.65	E: 106192.17	57°56'47"N	006°58'03"W
N: 905924.20	E: 106219.63	57°56'43"N	006°58'01"W
N: 905989.15	E: 106257.13	57°56'46"N	006°57'59"W
N: 905886.70	E: 106284.58	57°56'42"N	006°57'56"W
N: 905951.65	E: 106322.08	57°56'44"N	006°57'54"W
N: 905736.70	E: 106544.39	57°56'38"N	006°57'40"W
N: 905801.65	E: 106581.89	57°56'40"N	006°57'38"W
N: 905699.20	E: 106609.34	57°56'37"N	006°57'36"W
N: 905764.15	E: 106646.84	57°56'39"N	006°57'34"W
N: 905839.15	E: 106516.93	57°56'41"N	006°57'42"W
N: 905774.20	E: 106479.43	57°56'39"N	006°57'44"W

FEED BARGE:

N: 905766.43	E: 106345.41	57°56'39"N	006°57'52"W
--------------	--------------	------------	-------------