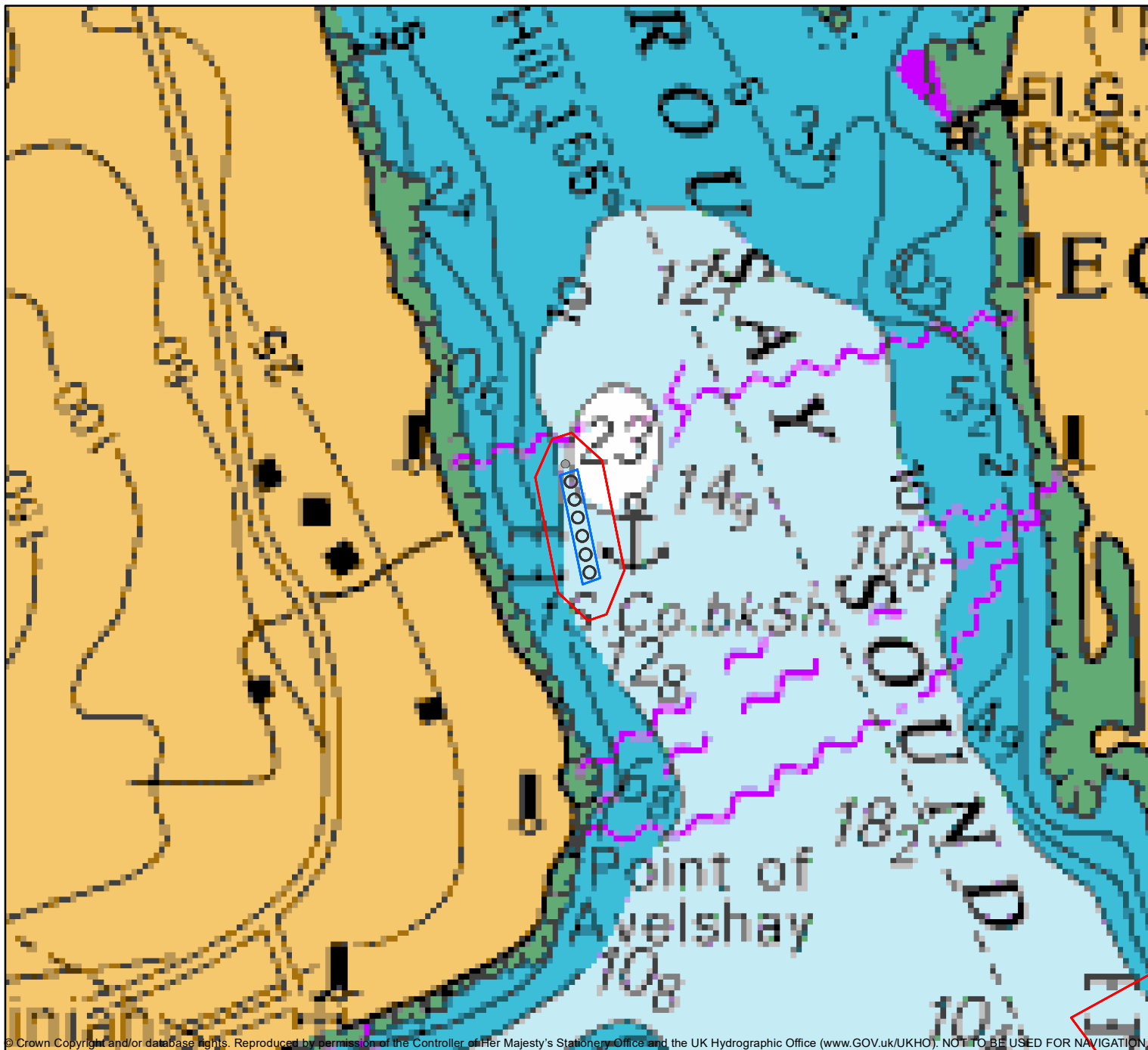


Kirknoust



© Crown Copyright and/or database rights. Reproduced by permission of the Controller of Her Majesty's Stationery Office and the UK Hydrographic Office (www.GOV.UK/UKHO). NOT TO BE USED FOR NAVIGATION.

Kirknoust	WGS 1984		OSGB	
	Latitude	Longitude	Easting	Northing
MCA	59 08.847	2 57.847	344946.1	1029361.99
	59 08.856	2 57.793	344997.82	1029377.95
	59 08.816	2 57.707	345078.74	1029302.54
	59 08.791	2 57.895	344898.83	1029258.73
	59 08.592	2 57.694	345085.15	1028886.66
	59 08.583	2 57.746	345035.32	1028870.67
	59 08.656	2 57.643	345135.48	1029004.73
	59 08.624	2 57.831	344955.37	1028947.93
	Grid	59 08.803	2 57.776	345012.6
	59 08.794	2 57.826	344964.7	1029263
	59 08.645	2 57.712	345069.4	1028985
	59 08.636	2 57.762	345021.5	1028969
Site Centre	59 08.719	2 57.769	345017.03	1029123.38
Barge	59 08.810	02 57.810	344980.38	1029292.82

- Barge
- MCA
- Grid
- Pens



0 0.5 1 km

1:30,000

Coordinate System: WGS 1984 World Mercator
 Projection: Mercator
 Datum: WGS 1984
 False Easting: 0.0000
 False Northing: 0.0000
 Central Meridian: 0.0000
 Standard Parallel 1: 0.0000
 Units: Meter

