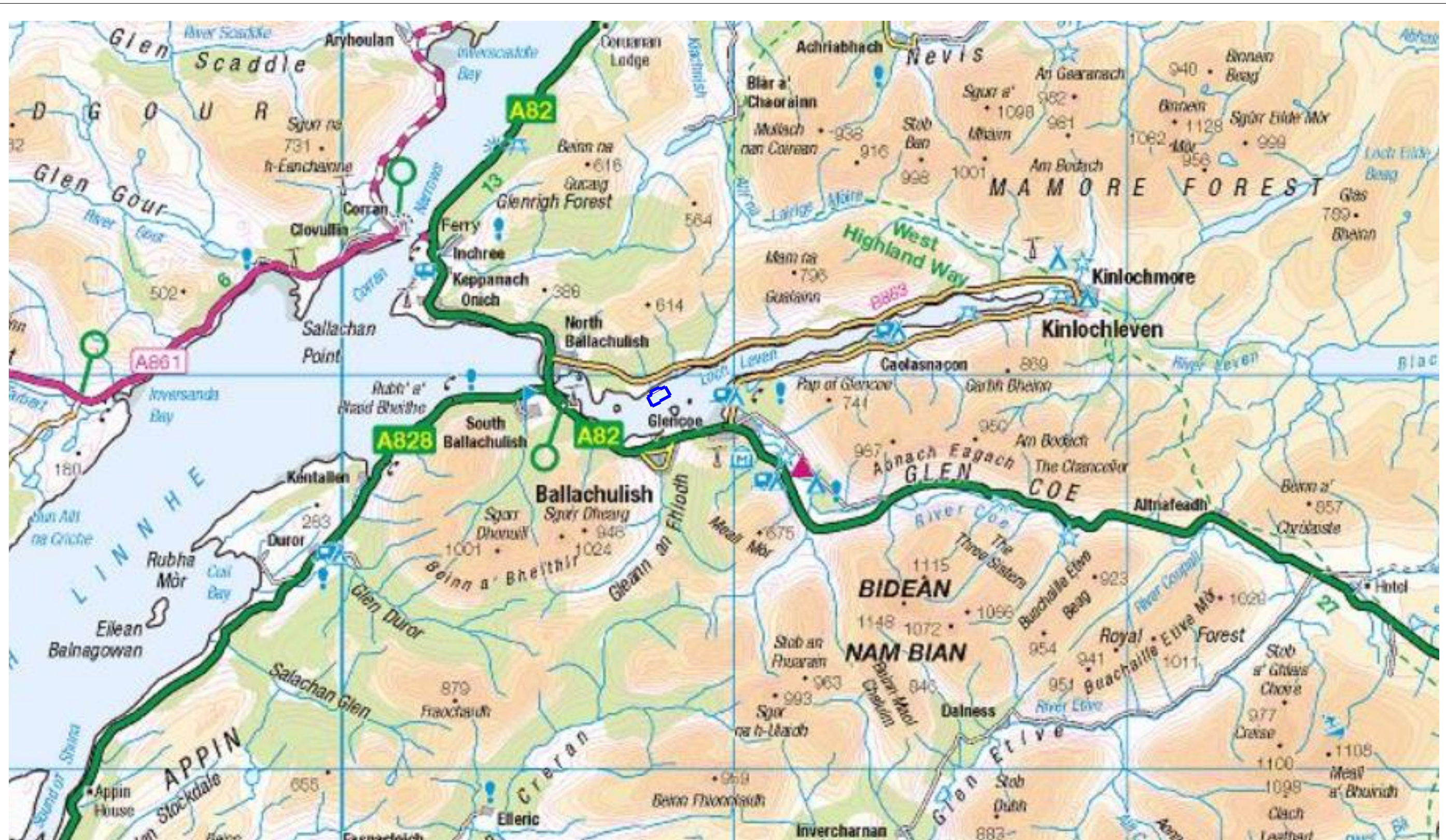




<b>LOCH LEVEN</b>	Key:						
<b>GENERAL VIEW: ORDNANCE SURVEY MAP</b>		Not to scale	08/12/2016	AN	CLH	0001	Final
Figure 1	General view and location of Loch Leven	Scale	Date	Drawn	Checked	Revision No.	Status




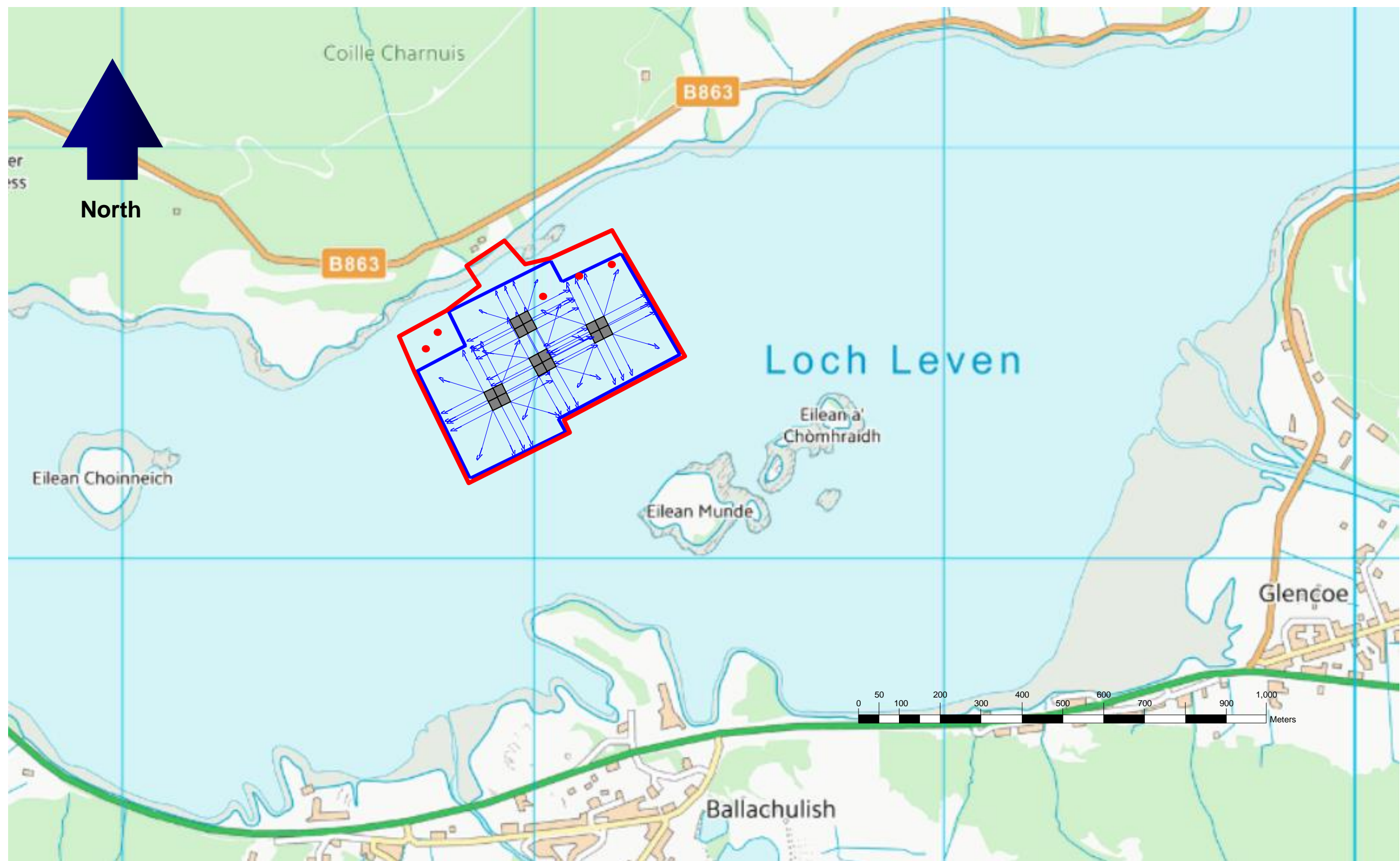
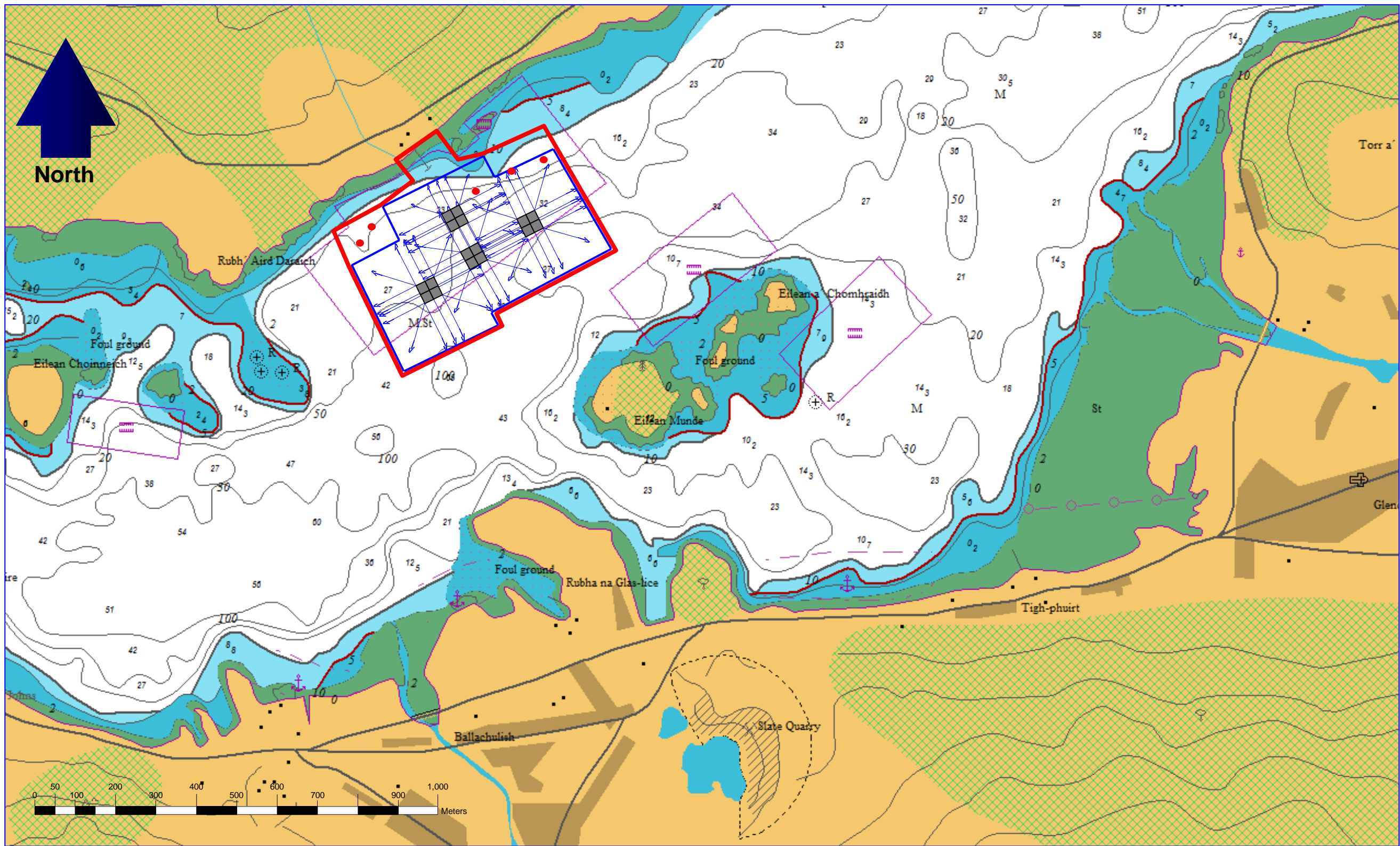
LEVEN FISH FARM: LOCH LEVEN	Key:  Proposed Pen Moorings Area	1:100,000	24/01/2017	CLH	CLH	0001	Final
OS EXTRACT OF SITE LOCATION		Scale	Date	Drawn	Checked	Revision No.	Status

Figure 2. General view of the proposed Leven fish farm. 16 steel square pens: each 24m by 24m



<b>LEVEN FISH FARM: LOCH LEVEN</b>		<b>Key:</b> <span style="display: inline-block; width: 15px; height: 15px; background-color: grey; border: 1px solid black; margin-right: 5px;"></span> Proposed Pens <span style="display: inline-block; width: 15px; height: 15px; border: 2px solid red; margin-right: 5px;"></span> Proposed Planning Area <span style="display: inline-block; width: 15px; height: 15px; border: 2px solid blue; margin-right: 5px;"></span> Proposed Pen Mooring Area <span style="display: inline-block; width: 10px; height: 10px; background-color: red; border-radius: 50%; margin-right: 5px;"></span> Single Point Moorings	<b>1:10,000</b>	<b>24/01/2017</b>	<b>CLH</b>	<b>CLH</b>	<b>0001</b>	<b>Final</b>
<b>OS EXTRACT OF SITE LOCATION</b>			Scale	Date	Drawn	Checked	Revision No.	Status
Figure 4	General view of Leven fish farm. 16 steel square pens: each 24m by 24m							

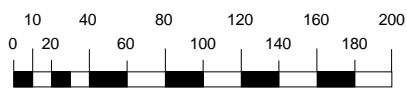
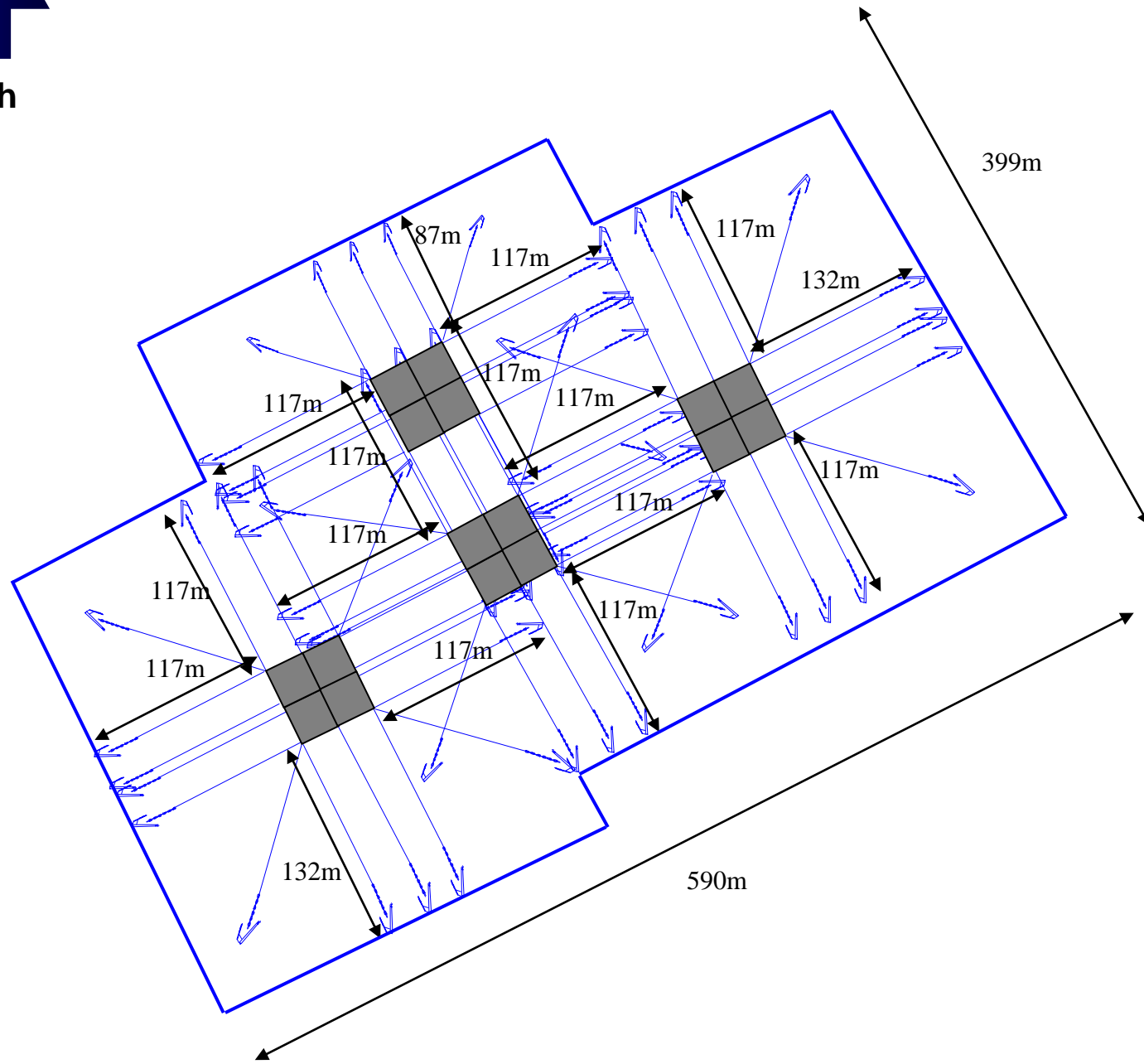
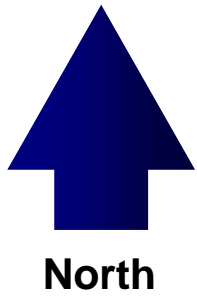


**LEVEN FISH FARM: LOCH LEVEN**  
**ADMIRALTY CHART EXTRACT OF SITE LOCATION**  
 Figure 5 General view of Leven fish farm.  
 16 steel square pens: each 24m by 24m

Key:

- Proposed Pens
- Proposed Planning Area
- Proposed Pen Mooring Area
- Single Point Moorings

1:10,000	24/01/2017	CLH	CLH	0001	Final
Scale	Date	Drawn	Checked	Revision No.	Status



**LEVEN FISH FARM: LOCH LEVEN**

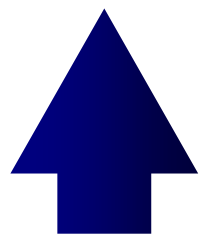
**SITE PLAN: PROPOSED EQUIPMENT**

Figure 6. Detailed illustration of Pens and moorings.  
16 steel square pens: each measures 24m by 24m.

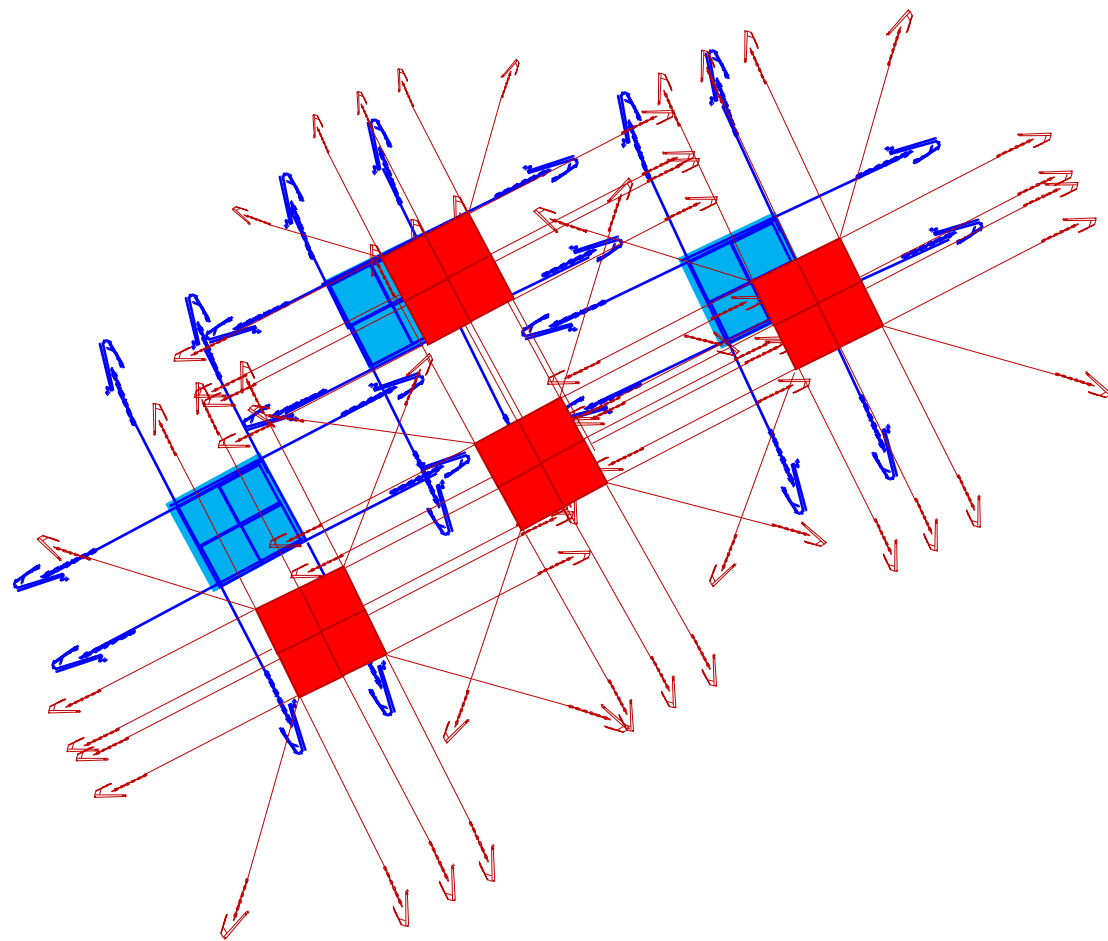
Key:



- Pens
- Pen Mooring Area
- Moorings

1:4,000	08/12/2016	AN	CLH	0001	Final
Scale	Date	Drawn	Checked	Revision No.	Status



North



<b>LEVEN FISH FARM: LOCH LEVEN</b>			Key:		
<b>SITE PLAN: PROPOSED vs EXISTING EQUIPMENT</b>			 Proposed Pens and Moorings		
Figure 7. Proposed pens overlaying the existing layout.			 Existing Pens and Moorings		
1:4,000	24/01/2017	CLH	CLH	0001	Final
Scale	Date	Drawn	Checked	Revision No.	Status

## **Fish Farm Co-ordinates – Existing Site Equipment**

Mid-Point 56° 41.275'N 005° 8.242'W      E207985 N759521

### **Pen Group Co-ordinates**

#### **North Group**

NW 56° 41.290'N 005° 8.290'W E207902 N759562

NE 56° 41.310'N 005° 8.240'W E207954 N759596

SW 56° 41.270'N 005° 8.270'W E207920 N759524

SE 56° 41.280'N 005° 8.220'W E207972 N759540

#### **South East Group**

NW 56° 41.300'N 005° 8.120'W E208076 N759573

NE 56° 47.310'N 005° 8.070'W E208128 N759588

SW 56° 41.270'N 005° 8.100'W E208094 N759516

SE 56° 47.280'N 005° 8.050'W E208146 N759532

#### **South West Group**

NE 56° 41.240'N 005° 8.370'W E207868 N759489

NW 56° 41.250'N 005° 8.320'W E207816 N759473

SW 56° 41.210'N 005° 8.350'W E207834 N759416

SE 56° 41.223'N 005° 8.300'W E 207886 N 759438

### **Pen Moorings Corner Co-ordinates**

N 56° 41.288'N 005° 8.372'W E207818 N759562

N 56° 41.326'N 005° 8.404'W E207788 N759634

N 56° 41.375'N 005° 8.175'W E208026 N759714

N 56° 41.351'N 005° 8.161'W E208038 N759669

NW 56° 41.238'N 005° 8.544'W E207638 N759477

NE 56° 41.385'N 005° 7.991'W E208214 N759723

SE 56° 41.272'N 005° 7.898'W E208300 N759509

SW 56° 41.123'N 005° 8.417'W E207757 N759257

## **Fish Farm Co-ordinates – Proposed**

Mid-Point 56° 41.275'N 005° 8.242'W E207985 N759521

### **Planning Boundary**

SW 56° 41.341'N 005° 8.327'W E207868 N759658  
NW 56° 41.368'N 005° 8.363'W E207834 N759710  
NE 56° 41.410'N 005° 8.267'W E207935 N759783  
SE 56° 41.374'N 005° 8.217'W E207983 N759714  
N 56° 41.319'N 005° 8.380'W E 207704 N 759469  
N 56° 41.379'N 005° 8.165'W E 208037 N 759721  
NWW 56° 41.276'N 005° 8.524'W E207662 N759546  
NEE 56° 41.419'N 005° 8.009'W E 208199 N 759788  
S 56° 41.171'N 005° 8.147'W E 208037 N 759334  
S 56° 41.152'N 005° 8.129'W E 208054 N 759298  
SW 56° 41.089'N 005° 8.346'W E 207827 N 759192  
SE 56° 41.264'N 005° 7.852'W E 208346 N 759493

### **Pen Group Co-ordinates**

#### **North-West Group**

N 56° 41.310'N 005° 8.222'W E 207973 N 759596  
E 56° 41.288'N 005° 8.201'W E 207992 N 759554  
W 56° 41.299'N 005° 8.261'W E 207932 N 759577  
S 56° 41.276'N 005° 8.241'W E 207950 N 759533

#### **North-East Group**

N 56° 41.304'N 005° 8.044'W E 208154 N 759576  
E 56° 41.282'N 005° 8.023'W E 208173 N 759534  
W 56° 41.292'N 005° 8.084'W E 208112 N 759556  
S 56° 41.270'N 005° 8.063'W E 208132 N 759514

#### **Mid Group**

N 56° 41.263'N 005° 8.178'W E 208014 N 759506  
E 56° 41.240'N 005° 8.154'W E 208036 N 759463  
W 56° 41.251'N 005° 8.216'W E 207974 N 759486  
S 56° 41.228'N 005° 8.196'W E 207992 N 759442

#### **South Group**

NW 56° 41.216'N 005° 8.283'W E 207902 N 759424  
NE 56° 41.194'N 005° 8.262'W E 207922 N 759382  
SW 56° 41.205'N 005° 8.324'W E 207860 N 759406  
SE 56° 41.182'N 005° 8.303'W E 207879 N 759362



### **Pen Moorings Corner Co-ordinates**

N 56° 41.379'N 005° 8.165'W E 208037 N 759721  
N 56° 41.350'N 005° 8.136'W E 208064 N 759666  
N 56° 41.392'N 005° 7.987'W E 208219 N 759737  
E 56° 41.264'N 005° 7.852'W E 208346 N 759493  
W 56° 41.235'N 005° 8.479'W E 207812 N 759620  
W 56° 41.273'N 005° 8.336'W E 207853 N 759532  
W 56° 41.319'N 005° 8.380'W E 207704 N 759469  
S 56° 41.171'N 005° 8.147'W E 208037 N 759334  
S 56° 41.152'N 005° 8.129'W E 208054 N 759298  
S 56° 41.089'N 005° 8.346'W E 207827 N 759192

### **Ancillary Equipment Co-ordinates**

56° 41.262N 005° 8.448W E207738.057 N759516.974 (Raft)  
56° 41.283N 005° 8.417W E207771.487 N759554.571 (Raft)  
56° 41.329N 005° 8.190W E208007.011 N759629.252  
56° 41.355N 005° 8.108W E208092.889 N759673.803  
56° 41.378N 005° 8.018W E208186.666 N759712.042

### **Pontoon**

56 41.360N 5 8.280W E207917.814 N759691.174