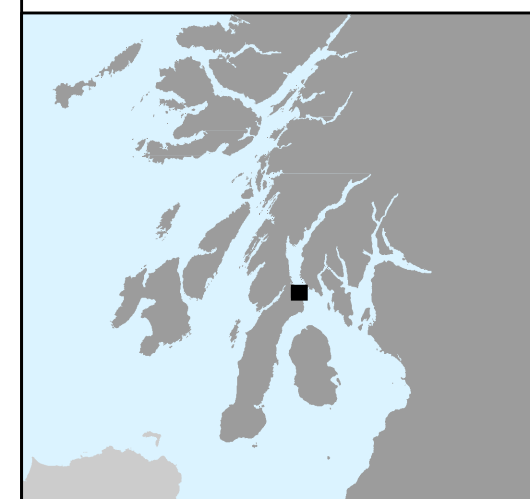




### Legend

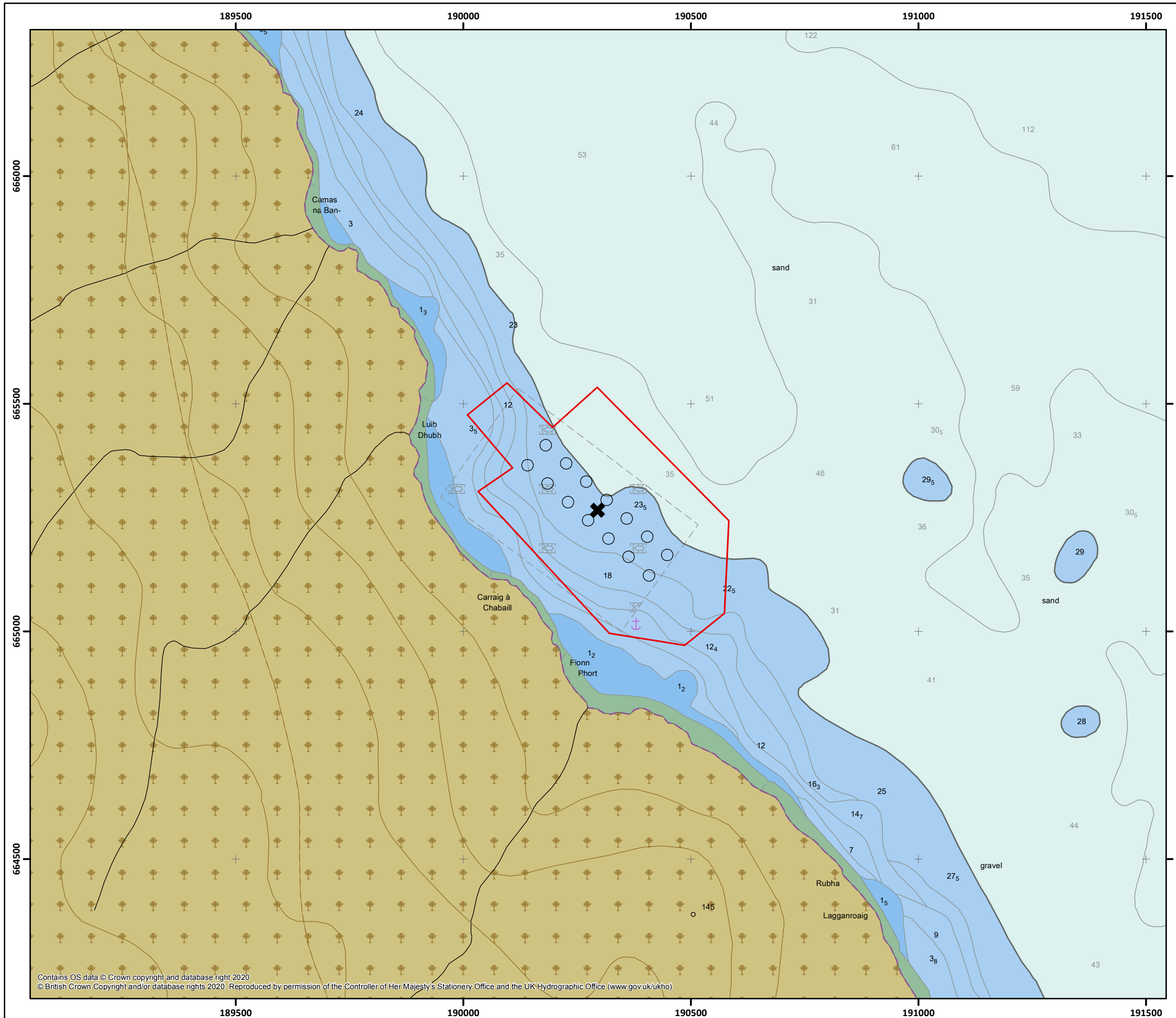
- Mooring Area
- Pen
- ✕ Site Centre  
55° 50.095 N, 005° 21.017 W



Drawn by: MED	1:8,000 @A3
Checked by: PH	Revision: A1
Approved By: PH	Date: 19/06/2020

### Site Location Figure 1

### Tarbert South Loch Fyne



Contains OS data © Crown copyright and database right 2020  
© British Crown Copyright and/or database rights 2020. Reproduced by permission of the Controller of Her Majesty's Stationery Office and the UK Hydrographic Office (www.gov.uk/ukho)