

Column headings in the Initial Burial Assessment Tab	Column heading descriptions
<b>Survey Data</b>	Table that contains the information that is extracted from our surveys
<b>Feasible Maximum (formula)</b>	This formula work out if the required burial depth can be obtained using the survey data information
<b>Feasible Maximum</b>	This table removes the formula from the previous assessment to allow the engineering practicable assessment to be carried out.
<b>Engineering Practicable Assessment</b>	This table summaries the engineering review that is carried out after the "Feasibility" assessment is carried out. This identifies what is engineering possible.
<b>CBA Input - Burial %</b>	This table converts the previous engineering assessment into a summary %.
<b>Environmental Assessment</b>	<b>"Included in error and should be removed"</b>

Confidential

Table heading	Table heading description
<b>Survey Data</b>	Contains the information that is extracted from our surveys
<b>Feasible Maximum (formula)</b>	This table works out if the required burial depth can be obtained using the survey data information
<b>Feasible Maximum</b>	This table removes the formula from the previous assessment to allow the engineering practicable assessment to be carried out.
<b>Engineering Practicable Assessment</b>	This table summaries the engineering review that is carried out after the "Feasibility" assessment is carried out. This identifies what is engineering possible.
<b>CBA Input - Burial %</b>	This table converts the previous engineering assessment into a summary %.
<b>Environmental Assessment</b>	"Included in error and should be removed"

<b>Column heading</b>	<b>Column heading descriptions</b>
<b>Length (M)</b>	This is the length of the survey that was carried out - Typically recorded at 50m intervals.
<b>R2 Reduced (M)</b>	This is the depth to the rock on the seabed
<b>Seabed (M)</b>	This is the depth to the top of any sediment
<b>Difference (Depth of Sediment) (M)</b>	This is the difference between the sediment and rock - i.e. what is the depth of material that burial is can utilise.
<b>Mass Flow Excavation (&gt;1.5m)</b>	Used to indicate that there are more than 1.5m of burial material
<b>Jetting (&gt;1.5m)</b>	Used to indicate that there are more than 1.5m of burial material
<b>Ploughing (&gt;2.0m)</b>	Used to indicate that there are more than 2.0m of burial material
<b>Mass Flow Excavation (&gt;1.5m)</b>	Used to indicate that there are more than 1.5m of burial material
<b>Jetting (&gt;1.5m)</b>	Used to indicate that there are more than 1.5m of burial material
<b>Ploughing (&gt;2.0m)</b>	Used to indicate that there are more than 2m of burial material
<b>Mass Flow Excavation (&gt;1.5m)</b>	Used to ensure that burial depths and lengths are achievable
<b>Comment</b>	Used to ensure that burial depths and lengths are achievable
<b>Jetting (&gt;1.5m)</b>	Used to ensure that burial depths and lengths are achievable
<b>Comment</b>	Used to ensure that burial depths and lengths are achievable
<b>Ploughing (&gt;2.0m)</b>	Used to ensure that burial depths and lengths are achievable
<b>Is section length less than 500m</b>	Used to ensure that burial depths and lengths are achievable
<b>Route Section</b>	Used for the CBA to identify which section is being considered.
<b>Length (M)</b>	Length in meters for the CBA calculation
<b>Depth (M)</b>	Depth in meters for the CBA calculation
<b>Mass flow excavation</b>	Outcomes of assessment for the protection method
<b>Jetting</b>	Outcomes of assessment for the protection method
<b>Ploughing</b>	Outcomes of assessment for the protection method

**Assumptions**

**Explanation**

<b>Initial burial feasibility assessment assumptions</b>				<b>Justification of burial feasibility assessment</b>
Method of installation	Unfeasible depth (m) is less than	Feasible depth (m) is more than		Method of installation
Mass flow excavation		1.5	1.5	Mass flow excavation
Jetting		1.5	1.5	Jetting
Ploughing		2	2	Ploughing

<b>Initial engineering practicability assumptions</b>				<b>Justification of length feasibility assessment</b>
Method of installation	Unfeasible length (m) is less than	Feasible length (m) is more than		Method of installation
Mass flow excavation		50	50	Mass flow excavation
Jetting		50	50	Jetting
Ploughing		500	500	Ploughing
Horizontal directional drill	Unfeasible length (m) is more than	Feasible length (m) is less than		Horizontal directional drill
		1500	1500	

<b>Method of installation hierarchy</b>	
Horizontal directional drill	Horizontal directional drilling facilitates the complete removal of the of the future impact of the electricity submarine cable to other marine users within the marine environment
Mass flow excavation	Mass flow excavation is the preferred burial as it allows the required burial protection to be gained at the lowest risk to our electricity submarine cable in the marine environment.
Jetting	Jetting is a versatile burial method which allows burial to be carried out within stiffer sandy sediment marine environments and provides opportunities to work within multiple sea bed types.
Ploughing	Ploughing is a versatile burial method which allows a trench to be cut into stiff clay and hard sediment sea bed types and will provide the deepest burial cover but is limited in its application to longer tows due to set up constraints.
Rock placement / Rock bags	Rock placement or Rock bags are the preferred protection method due to their flexible application to the marine environment.
Concrete matting	Concrete matting are a good protection method but are limiting in their application due to the time for deployment and weight for installation.
Split pipe	Split pipe cable protection is suitable only for shallower cables due to the need for it to be installed by a diver post lay
Surface lay	Surface lay is the process of laying the electricity submarine cable directly on the sea bed floor.

<b>Fishing Values</b>
Inshore Fishing - ScotMap - Mackerel Lines - Monetary Value (£)
Inshore Fishing - ScotMap - Scallop Divers - Monetary Value (£)
Inshore Fishing - ScotMap - Scallop Towed Dredges - Monetary Value (£)
Inshore Fishing - ScotMap - Nephrops Pots - Monetary Value (£)
Inshore Fishing - ScotMap - Not Nephrops Pots - Monetary Value (£)
Inshore Fishing - ScotMap - Nephrops Trawls - Monetary Value (£)
Inshore Fishing - ScotMap - Crab and Lobster Pots - Monetary Value (£)
Inshore Fishing - ScotMap - Relative Value - (£)
Inshore Fishing - ScotMap - Monetary Value (£)
Fishing Statistics - Shellfish sales (£) - 2011-2015
Fishing Statistics - Demersal sales (£) - 2011-2015
Fishing Statistics - Pelagic sales (£) - 2011-2015

Survey Data			
Length (M)	R2 Reduced (M)	Seabed (M)	Difference (Depth of Sediment) (M)
150	-	-	0.5
1450	-	-	1.5
4700	-	-	1.5
10000	-	-	1.5
4700	-	-	1.5
4700	-	-	1.5
4700	-	-	1.5
1450	-	-	1.5
288	-	-	0.5

CBA Input - Existing Cable					
Route Section	Length (M)	Depth (M)	Depth of Cover (m)	Length (M)	Percent Route
1	150	<10	On Surface	150	0.47%
2	1450	10-40	Burial	1450	4.53%
3	4700	40+	Burial	4700	14.69%
4	10000	40+	Burial	10000	31.25%
5	4700	40+	Burial	4700	14.69%
6	4700	40+	Burial	4700	14.69%
7	4700	40+	Burial	4700	14.69%
8	1450	10-40	Burial	1450	4.53%
9	150	<10	On Surface	150	0.47%

Confidential

**Data Entry**

Input  
Copy from CBA Interface tab "Data Entry"

Circuit Code / NRN	0622301	Enter
Age of Oldest Section of Cable (Years) <span>?</span>	31	Enter
Will Existing Cable Require Decommissioning?	No	Select
Will New Cable Require Decommissioning at End of Life or After Fault?	Yes	Select
No. of Users to be Connected (Total)	13600	Enter
No. of Domestic Users		Enter
No. of SME Users <span>?</span>		Enter
No. of Commercial & Industrial Users		Enter
Renewables to be Connected (MW)	32.7	Enter
Cable Life Expectancy if Not Protected (Years) <span>?</span>	30	Enter
Operating Voltage (kV)	33	Select
Is a Back-up Supply Available?	Yes	Select
Route Length (km)	32.138	Check length of sections!
Planned or Unplanned	Unplanned	Select
Project Type <span>?</span>	Existing Route - End to End Replacement	Select
Protection Type	No Protection	Select
Installation Period	Summer	Select
Combined Wave and Current Energy <span>?</span>	Moderate	Select
Environment (Wave and Wind)	Wave >15kW per sq m, Wind > 800 W	Select
Proportion of Costs Passed to Distribution Bills in Year 1 (%)	0.00%	Enter
Proportion of Costs Passed to Distribution Bills in Years 2-4 (%)	0.00%	Enter
Proportion of Costs Passed to Distribution Bills in Years 5-6 (%)	3.00%	Enter
Assessment Year	2015	Select
Assessment Period (Years)	45	Select
Price Year	2012/13 prices	Select

Scotmap information can be found at:

<https://marinescotland.atkinsgeospatial.com/nmpi/>

Inshore Fishing - ScotMap - Mackerel Lines - Monetary Value (£)

Inshore Fishing - ScotMap - Scallop Divers - Monetary Value (£)

Inshore Fishing - ScotMap - Scallop Towed Dredges - Monetary Value (£)

Inshore Fishing - ScotMap - Nephrops Pots - Monetary Value (£)

Inshore Fishing - ScotMap - Not Nephrops Pots - Monetary Value (£)

Inshore Fishing - ScotMap - Nephrops Trawls - Monetary Value (£)

Inshore Fishing - ScotMap - Crab and Lobster Pots - Monetary Value (£)

Inshore Fishing - ScotMap - Relative Value - (£)

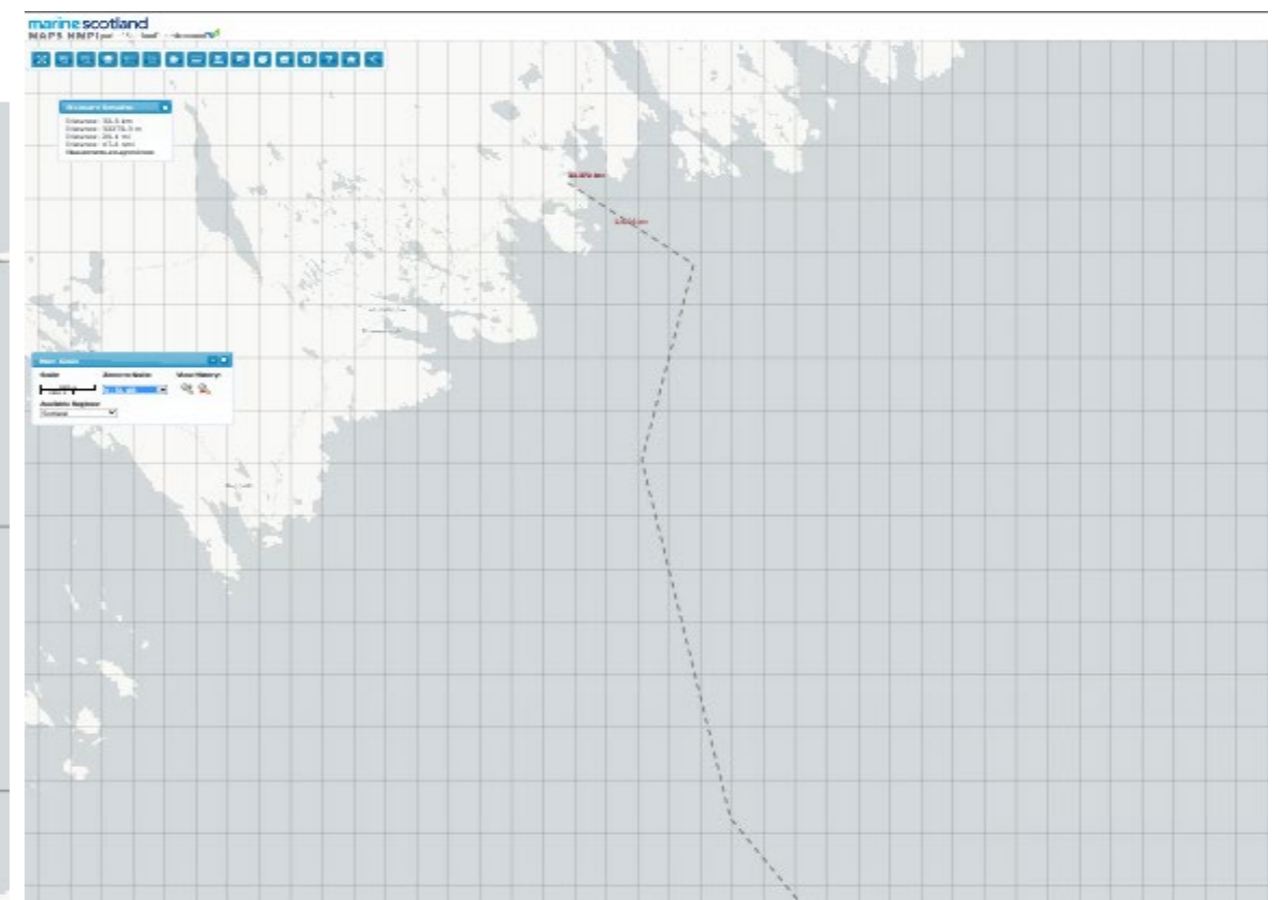
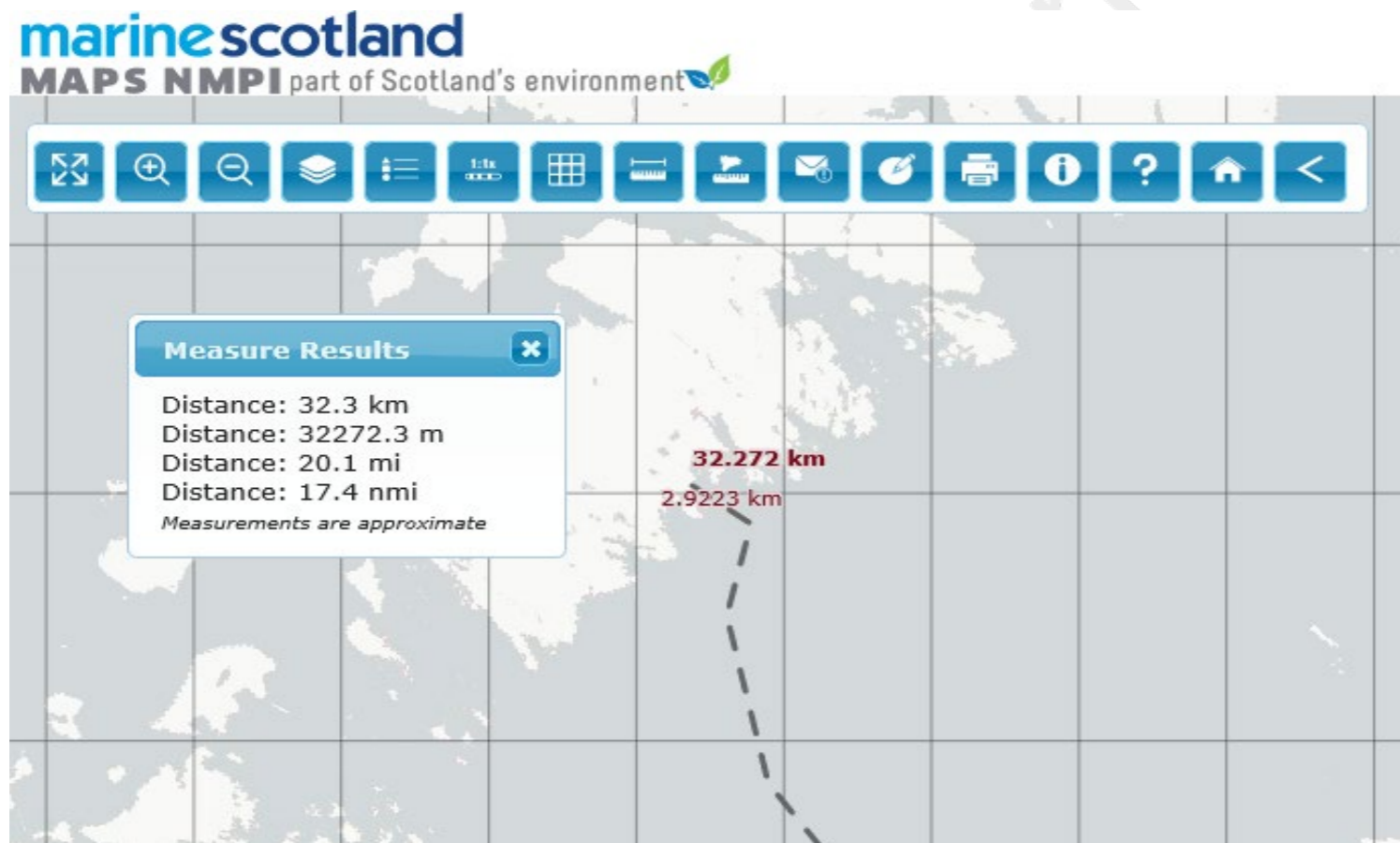
Inshore Fishing - ScotMap - Monetary Value (£)

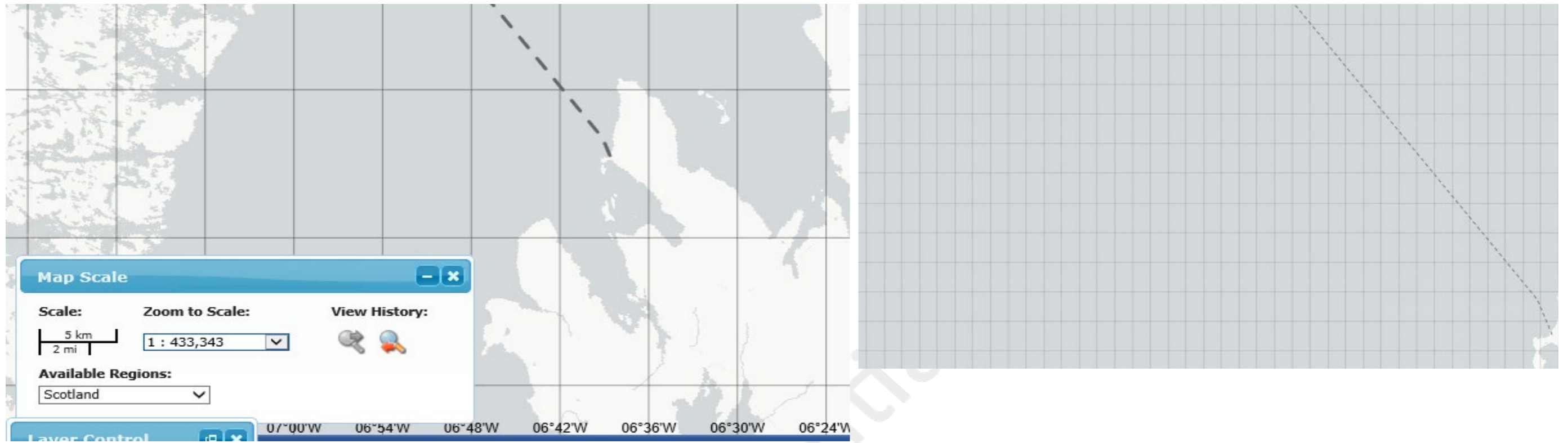
Fishing Statistics - Shellfish sales (£) - 2011-2015

Fishing Statistics - Demersal sales (£) - 2011-2015

Fishing Statistics - Pelagic sales (£) - 2011-2015

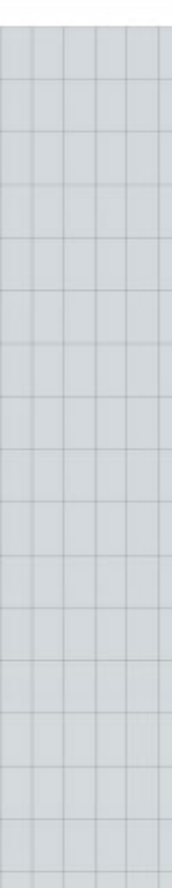
Confidential





Length of cable too large to extract meaningful maps.  
Figures for ScotMap Values were taken direct from the  
website using the maps mentioned above. 1:54000 scale  
was used





Confidential



Confidential

**NB: Maps are based on detailed analysis of the highlighted squares.**

<b>ScotMap Tables</b>
Inshore Fishing - ScotMap - Mackerel Lines - Monetary Value (£)
Inshore Fishing - ScotMap - Scallop Divers - Monetary Value (£)
Inshore Fishing - ScotMap - Scallop Towed Dredges - Monetary Value (£)
Inshore Fishing - ScotMap - Nephrops Pots - Monetary Value (£)
Inshore Fishing - ScotMap - Not Nephrops Pots - Monetary Value (£)
Inshore Fishing - ScotMap - Nephrops Trawls - Monetary Value (£)
Inshore Fishing - ScotMap - Crab and Lobster Pots - Monetary Value (£)
Inshore Fishing - ScotMap - Relative Value - (£)
Inshore Fishing - ScotMap - Monetary Value (£)
<b>Total annual value of fishery across cable route</b>

**NB: Maps are based on a 50km<sup>2</sup> Square**

<b>ScotMap Tables</b>
Fishing Statistics - Shellfish sales (£) - 2011-2015
Fishing Statistics - Demersal sales (£) - 2011-2015
Fishing Statistics - Pelagic sales (£) - 2011-2015
<b>Total annual value of fishery across cable route</b>

[Input required from ScotMap Tables](#)

Input Required

Input Required

Low Value (£/year)	High Value (£/year)	Average Value (£/year)
-	-	£0.00
150.00	447.00	£298.50
759.00	1,289.00	£1,024.00
3,861.00	51,801.00	£27,831.00
-	-	£0.00
102.00	1,558.00	£830.00
682.00	7,486.00	£4,084.00
3.00	17.00	£10.00
2,211.00	12,377.00	£7,294.00

Input Required

Input Required

Low Value (£/year)	High Value (£/year)	Average Value (£/Year)
2,000,000.00	5,000,000.00	£3,500,000.00
500,000.00	2,000,000.00	£1,250,000.00
-	2,000,000.00	£1,000,000.00

Input Required

Upper Value (£/year)	Quantity Layer 1	Central Scenario (£/year)	High Value Scenario (£/year)
£0	0	£0	£0
£447	13	£3,881	£5,811
£1,289	10	£10,240	£12,890
£51,801	41	£1,141,071	£2,123,841
£0	0	£0	£0
£1,558	46	£38,180	£71,668
£7,486	45	£183,780	£336,870
£17	49	£490	£833
£12,377	48	£350,112	£594,096
		<b>£1,727,754</b>	<b>£3,146,009</b>

Input Required

Upper Value (£/year)	Quantity Layer 1	Central Scenario (£/year)	High Value Scenario (£/year)
£5,000,000	1	£3,500,000	£5,000,000
£2,000,000	1	£1,250,000	£2,000,000
£2,000,000	1	£1,000,000	£2,000,000
		<b>£5,750,000</b>	<b>£9,000,000</b>

<b>Total Fishing Value</b>	£7,477,754	Input Required
<b>Number of Section in CBA Model</b>	9.00	
<b>Value per Section of CBA</b>	£830,862	

	<b>Criteria 1 - Burial</b>	<b>Burial %</b>	<b>Length (km)</b>
	<b>Baseline</b>	<b>No Burial</b>	<b>0.00%</b>
			<b>0</b>
Phase 1	Option 1A		-
	Option 1B	Jetting	50.47%
	Option 1C	Jetting	99.06%
	Option 1D	Jetting	90.00%
	Option 1E	Jetting	84.38%
	Option 1F	Jetting	79.80%
	Option 1G	Jetting	75.30%
	Option 1H	Jetting	69.70%
	Option 1I	Jetting	31.25%
	Option 1J	Jetting	14.69%
	Option 1K	Jetting	63.28%
	Phase 2	Option 2A	Jetting
Option 2B		Jetting	79.80%
Option 2C		Jetting	75.30%
Option 2D		Jetting	75.30%
Option 2E		Jetting	90.00%
Option 2F		Jetting	79.80%
Option 2G		Jetting	75.30%
Option 2H		Jetting	75.30%
Option 2I		Jetting	75.30%
Option 2J		Jetting	75.30%
Phase 3	Option 3A	Jetting	84.38%
	Option 3B	Jetting	84.38%
	Option 3C	Jetting	75.30%
	Option 3D	Jetting	75.30%
	Option 3E	Jetting	75.30%
	Option 3F	Jetting	84.38%
	Option 3G	Jetting	75.30%

(Shore End only)

Criteria 2 - Protection	Protection %	Length (km)	Criteria 3 - Protection	HDD %
	0.00%	0	Split pipe both shore ends	0.94%
		-	-	
		-	Split pipe both shore ends	0.94%
		-	Split pipe both shore ends	0.94%
		-	Split pipe both shore ends	0.94%
		-	Split pipe both shore ends	0.94%
		-	Split pipe both shore ends	0.94%
		-	Split pipe both shore ends	0.94%
		-	Split pipe both shore ends	0.94%
		-	Split pipe both shore ends	0.94%
		-	Split pipe both shore ends	0.94%
		-	Split pipe both shore ends	0.94%
Rock Bagging	4.53%	1.45	Split pipe both shore ends	0.94%
Rock Bagging	4.53%	1.45	Split pipe both shore ends	0.94%
Rock Bagging	4.53%	1.45	Split pipe both shore ends	0.94%
Rock Bagging	9.06%	2.90	Split pipe both shore ends	0.94%
Mattressing	4.53%	1.45	Split pipe both shore ends	0.94%
Mattressing	4.53%	1.45	Split pipe both shore ends	0.94%
Mattressing	4.53%	1.45	Split pipe both shore ends	0.94%
Mattressing	9.06%	2.90	Split pipe both shore ends	0.94%
Rock Bagging	2.27%	0.72	Split pipe both shore ends	0.94%
Rock Bag/Matt 2.265% Each	4.53%	1.45	Split pipe both shore ends	0.94%
		-	Split pipe both shore ends	0.94%
		-	Split pipe both shore ends	0.94%
		-	Split pipe both shore ends	0.94%
Rock Bagging	2.27%	0.73	Split pipe both shore ends	0.94%
Rock Bagging	2.27%	0.73	Split pipe both shore ends	0.94%
-		-	Split pipe both shore ends	0.94%
Rock Bagging	2.27%	0.73	Split pipe both shore ends	0.94%

Length (km)	Criteria 4 - Surface Lay	Surface Lay %	Length (km)	Total Societal Value
	_Surfacelay	99.06%	31.70	-£ 17,791,507
-	_Surfacelay	100.00%	32.00	-£ 13,273,404
0.30	_Surfacelay	48.59%	15.55	-£ 18,270,653
0.30		0.00%	0.00	-£ 16,941,806
0.30	_Surfacelay	9.06%	2.90	-£ 18,630,396
0.30	_Surfacelay	14.68%	4.70	-£ 18,636,355
0.30	_Surfacelay	19.26%	6.16	-£ 18,560,831
0.30	_Surfacelay	23.76%	7.60	-£ 18,485,307
0.30	_Surfacelay	29.36%	9.40	-£ 18,491,266
0.30	_Surfacelay	67.81%	21.70	-£ 18,050,040
0.30	_Surfacelay	84.37%	27.00	-£ 17,936,596
0.30	_Surfacelay	35.78%	11.45	-£ 18,447,386
0.30	_Surfacelay	4.53%	1.45	-£ 27,749,866
0.30	_Surfacelay	14.73%	4.71	-£ 27,680,301
0.30	_Surfacelay	19.23%	6.15	-£ 27,604,777
0.30	_Surfacelay	14.70%	4.70	-£ 36,724,247
0.30	_Surfacelay	4.53%	1.45	-£ 42,139,346
0.30	_Surfacelay	14.73%	4.71	-£ 42,069,781
0.30	_Surfacelay	19.23%	6.15	-£ 41,994,257
0.30	_Surfacelay	14.70%	4.70	-£ 65,503,207
0.30	_Surfacelay	21.50%	6.88	-£ 23,090,646
0.30	_Surfacelay	19.23%	6.15	-£ 34,913,367
0.30	_Surfacelay	14.68%	4.70	-£ 17,362,555
0.30	_Surfacelay	14.68%	4.70	-£ 16,823,136
0.30	_Surfacelay	23.76%	7.60	-£ 17,228,902
0.30	_Surfacelay	21.49%	6.88	-£ 21,590,914
0.30	_Surfacelay	21.49%	6.88	-£ 20,960,450
0.30	_Surfacelay	14.68%	4.70	-£ 18,636,355
0.30	_Surfacelay	21.49%	6.88	-£ 23,090,646



✓ / ✗

Net change (£)	Net Change (%)	Pass
£ -		
£ 4,518,103	-25.39%	
-£ 479,146	2.69%	
£ 849,701	-4.78%	
-£ 838,889	4.72%	
-£ 844,848	4.75%	
-£ 769,324	4.32%	
-£ 693,800	3.90%	
-£ 699,759	3.93%	
-£ 258,533	1.45%	
-£ 145,089	0.82%	
-£ 655,879	3.69%	
-£ 9,958,359	56%	
-£ 9,888,794	56%	
-£ 9,813,270	55%	
-£ 18,932,740	106%	
-£ 24,347,839	137%	
-£ 24,278,274	136%	
-£ 24,202,750	136%	
-£ 47,711,700	268%	
-£ 5,299,139	30%	
-£ 17,121,860	96%	
£ 428,952	-2%	
£ 968,371	-5%	
£ 562,605	-3%	
-£ 3,799,407	21%	
-£ 3,168,944	18%	
-£ 844,848	5%	
-£ 5,299,139	30%	

Confidential

Comment	✓ / ✗ Pass
Option 1E with unprotected sections expected life at 40 years Option 1E with unprotected sections expected life at 45 years Option 1G with unprotected section expected life at 40 years Option 2I with unprotected sections expected life at 40 years Option 2I with unprotected sections expected life at 45 years Option 1E with all sections life 30 years Option 2I with all sections life 30 years	

Comment	✓ / X Pass

Confidential

Comment

Confidential

Length	#REF!
Category Number	
●	Impact 1
●	Impact 2
●	Impact 3
●	Impact 4
●	Impact 5
●	Impact 6
●	Impact 7
●	Impact 8
●	Impact 9
●	Impact 10
●	Impact 11
●	Impact 12
●	Impact 13
●	Impact 14
●	Impact 15
●	Impact 16
●	Impact 17
●	Impact 18

Confidential

Category	Number
	Impact 1
	Impact 2
	Impact 3
	Impact 4
	Impact 5
	Impact 6
	Impact 7
	Impact 8
	Impact 9
	Impact 10
	Impact 11
	Impact 12
	Impact 13
	Impact 14

Impact 15
Impact 16
Impact 17
Impact 18

Number

Impact 1

Impact 2

Impact 3

Impact 4

Impact 5

Impact 6

Impact 7

Impact 8

Impact 9

Impact 10

Impact 11

Impact 12

Impact 13

Impact 14

Impact 15

Impact 16

Impact 17

Impact 18

Confidential

Description
-------------

Decreased health and safety risk to marine vessel operators from cable snagging
Change in health and safety risk to cable laying vessel operators
Increased health costs due to increase in fuel poverty rates
Decreased damage costs to marine vessel operators from cable snagging
Decreased risk of energy outages for island communities due to lower fault rates
Increased distribution costs leading to lower renewable generation on islands and lower Gross Value Added (GVA)
Increased cost of fuel poverty eradication programme due to higher fuel bills
Increased cost to fishing operators due to loss of access to fishing grounds during cable installation
Decreased risk of energy outages for renewable generators due to lower fault rates
Increased distribution costs leading to lower renewable generation on islands and higher Greenhouse Gas (GHG) emissions
Change in GHG emissions from use of backup diesel generators
Change in costs to seabed and marine environment
Increased installation costs associated with protection
Change in repair costs
Increased cost of decommissioning associated with protection
Decreased risk of outage charges due to lower fault rates
Increased cost of maintenance surveys associated with protection
Change in use costs of using backup diesel generators

<b>Net Present Value (NPV)</b>
--------------------------------

Confidential

Description
-------------

Decreased health and safety risk to marine vessel operators from cable snagging
Change in health and safety risk to cable laying vessel operators
Increased health costs due to increase in fuel poverty rates
Decreased damage costs to marine vessel operators from cable snagging
Decreased risk of energy outages for island communities due to lower fault rates
Increased distribution costs leading to lower renewable generation on islands and lower Gross Value Added (GVA)
Increased cost of fuel poverty eradication programme due to higher fuel bills
Increased cost to fishing operators due to loss of access to fishing grounds during cable installation
Decreased risk of energy outages for renewable generators due to lower fault rates
Increased distribution costs leading to lower renewable generation on islands and higher Greenhouse Gas (GHG) emissions
Change in GHG emissions from use of backup diesel generators
Change in costs to seabed and marine environment
Increased installation costs associated with protection
Change in repair costs

Increased cost of decommissioning associated with protection
Decreased risk of outage charges due to lower fault rates
Increased cost of maintenance surveys associated with protection
Change in use costs of using backup diesel generators

Description

Decreased health and safety risk to marine vessel operators from cable snagging
Change in health and safety risk to cable laying vessel operators
Increased health costs due to increase in fuel poverty rates
Decreased damage costs to marine vessel operators from cable snagging
Decreased risk of energy outages for island communities due to lower fault rates
Increased distribution costs leading to lower renewable generation on islands and lower Gross Value Added (GVA)
Increased cost of fuel poverty eradication programme due to higher fuel bills
Increased cost to fishing operators due to loss of access to fishing grounds during cable installation
Decreased risk of energy outages for renewable generators due to lower fault rates
Increased distribution costs leading to lower renewable generation on islands and higher Greenhouse Gas (GHG) emissions
Change in GHG emissions from use of backup diesel generators
Change in costs to seabed and marine environment
Increased installation costs associated with protection
Change in repair costs
Increased cost of decommissioning associated with protection
Decreased risk of outage charges due to lower fault rates

Increased cost of maintenance surveys associated with protection  
Change in use costs of using backup diesel generators

Confidential



## Surface lay

No protection	
-£	27,898
-£	1,924
-£	10,241
-£	183,637
£	-
-£	413,126
-£	280,475
-£	2,007,847
-£	3,720
-£	291,407
-£	17,157
-£	35
-£	8,346,316
-£	4,407,858
-£	853,785
£	-
-£	922,790
-£	23,290
£	-
-£	17,791,507

'A)

3) emissions

Category Difference	£
Health and Safety	-£ 40,062
Socio-Economic	-£ 2,888,806
Environmental	-£ 8,363,508
Wider Economic and Engin	-£ 14,554,039

Category Difference	%
Health and Safety	100%
Socio-Economic	100%
Environmental	2710%
Wider Economic and Engin	100%

Impact Level Difference	£
Impact 1	-£ 27,898
Impact 2	-£ 1,924
Impact 3	-£ 10,241
Impact 4	-£ 183,637
Impact 5	£ -
Impact 6	-£ 413,126
Impact 7	-£ 280,475
Impact 8	-£ 2,007,847
Impact 9	-£ 3,720
Impact 10	-£ 291,407
Impact 11	-£ 17,157
Impact 12	-£ 35
Impact 13	-£ 8,346,316
Impact 14	-£ 4,407,858

'A)

3) emiss

Impact 15	-£	853,785
Impact 16	£	-
Impact 17	-£	922,790
Impact 18	-£	23,290

Impact Level Difference %	
Impact 1	100%
Impact 2	100%
Impact 3	100%
Impact 4	100%
Impact 5	#DIV/0!
'A) Impact 6	100%
Impact 7	100%
Impact 8	100%
Impact 9	100%
;) emiss Impact 10	100%
Impact 11	100%
Impact 12	100%
Impact 13	100%
Impact 14	100%
Impact 15	100%
Impact 16	#DIV/0!
Impact 17	100%
Impact 18	100%

## Option 1A

Proposed		Net Change	
-£	28,162	-£	264
-£	784	£	1,139
-£	8,608	£	1,632
-£	185,375	-£	1,738
£	-	£	-
£	-	£	413,126
-£	235,764	£	44,711
-£	1,975,742	£	32,106
-£	3,739	-£	19
£	-	£	291,407
-£	5,737	£	11,420
-£	29	£	7
-£	7,015,825	£	1,330,490
-£	2,861,463	£	1,546,395
-£	176,121	£	677,665
£	-	£	-
-£	768,267	£	154,523
-£	7,788	£	15,502
£	-		
-£	13,273,404	£	4,518,103

## Option 1B

Proposed	
-£	13,685
-£	2,024
-£	10,520
-£	90,081
£	-
-£	413,126
-£	288,117
-£	2,009,010
-£	3,720
-£	291,407
-£	17,570
-£	1,204
-£	8,573,727
-£	4,652,703
-£	957,117
£	-
-£	922,790
-£	23,852
£	-
-£	18,270,653

Category Difference	£
Health and Safety	£ 2,508
Socio-Economic	£ 488,186
Environmental	£ 1,341,917
Wider Economic and Engineering	£ 3,724,575

Category Difference
Health and Safety
Socio-Economic
Environmental
Wider Economic and Engineering

Category Difference	%
Health and Safety	-6%
Socio-Economic	-17%
Environmental	-435%
Wider Economic and Engineering	-26%

Category Difference
Health and Safety
Socio-Economic
Environmental
Wider Economic and Engineering

Impact Level Difference	£
Impact 1	-£ 264
Impact 2	£ 1,139
Impact 3	£ 1,632
Impact 4	-£ 1,738
Impact 5	£ -
Impact 6	£ 413,126
Impact 7	£ 44,711
Impact 8	£ 32,106
Impact 9	-£ 19
Impact 10	£ 291,407
Impact 11	£ 11,420
Impact 12	£ 7
Impact 13	£ 1,330,490
Impact 14	£ 1,546,395

Impact Level Difference
Impact 1
Impact 2
Impact 3
Impact 4
Impact 5
Impact 6
Impact 7
Impact 8
Impact 9
Impact 10
Impact 11
Impact 12
Impact 13
Impact 14

Impact 15	£	677,665
Impact 16	£	-
Impact 17	£	154,523
Impact 18	£	15,502

Impact 15
Impact 16
Impact 17
Impact 18

Impact Level Difference	%
Impact 1	1%
Impact 2	-59%
Impact 3	-16%
Impact 4	1%
Impact 5	#DIV/0!
Impact 6	-100%
Impact 7	-16%
Impact 8	-2%
Impact 9	1%
Impact 10	-100%
Impact 11	-67%
Impact 12	-18%
Impact 13	-16%
Impact 14	-35%
Impact 15	-79%
Impact 16	#DIV/0!
Impact 17	-17%
Impact 18	-67%

Impact Level Difference
Impact 1
Impact 2
Impact 3
Impact 4
Impact 5
Impact 6
Impact 7
Impact 8
Impact 9
Impact 10
Impact 11
Impact 12
Impact 13
Impact 14
Impact 15
Impact 16
Impact 17
Impact 18

Confidential

Option 1C

Net Change	Proposed	Net Change
£ 14,213	£ -	£ 27,898
-£ 100	-£ 1,544	£ 379
-£ 279	-£ 10,819	-£ 578
£ 93,556	£ -	£ 183,637
£ -	£ -	£ -
£ -	-£ 413,126	£ -
-£ 7,642	-£ 296,302	-£ 15,827
-£ 1,163	-£ 2,010,130	-£ 2,282
£ -	-£ 2,388	£ 1,332
£ -	-£ 291,407	£ -
-£ 414	-£ 18,621	-£ 1,464
-£ 1,168	-£ 1,729	-£ 1,694
-£ 227,411	-£ 8,817,301	-£ 470,986
-£ 244,845	-£ 3,149,362	£ 1,258,496
-£ 103,332	-£ 1,062,435	-£ 208,650
£ -	£ -	£ -
£ -	-£ 850,985	£ 71,805
-£ 561	-£ 15,656	£ 7,634
	£ -	
-£ 479,146	-£ 16,941,806	£ 849,701

£
£ 13,834
£ 84,752
-£ 228,993
-£ 576,150

Category Difference	£
Health and Safety	£ 27,699
Socio-Economic	£ 166,860
Environmental	-£ 474,143
Wider Economic and Engineering	£ 658,300

%
-35%
-3%
74%
4%

Category Difference	%
Health and Safety	-69%
Socio-Economic	-6%
Environmental	154%
Wider Economic and Engineering	-5%

£
£ 14,213
-£ 100
-£ 279
£ 93,556
£ -
£ -
-£ 7,642
-£ 1,163
£ -
£ -
-£ 414
-£ 1,168
-£ 227,411
-£ 244,845

Impact Level Difference	£
Impact 1	£ 27,898
Impact 2	£ 379
Impact 3	-£ 578
Impact 4	£ 183,637
Impact 5	£ -
Impact 6	£ -
Impact 7	-£ 15,827
Impact 8	-£ 2,282
Impact 9	£ 1,332
Impact 10	£ -
Impact 11	-£ 1,464
Impact 12	-£ 1,694
Impact 13	-£ 470,986
Impact 14	£ 1,258,496

-£	103,332
£	-
£	-
-£	561

Impact 15	-£	208,650
Impact 16	£	-
Impact 17	£	71,805
Impact 18	£	7,634

%
-51%
5%
3%
-51%
#DIV/0!
0%
3%
0%
0%
0%
0%
2%
3300%
3%
6%
12%
#DIV/0!
0%
2%

Impact Level Difference	%
Impact 1	-100%
Impact 2	-20%
Impact 3	6%
Impact 4	-100%
Impact 5	#DIV/0!
Impact 6	0%
Impact 7	6%
Impact 8	0%
Impact 9	-36%
Impact 10	0%
Impact 11	9%
Impact 12	4784%
Impact 13	6%
Impact 14	-29%
Impact 15	24%
Impact 16	#DIV/0!
Impact 17	-8%
Impact 18	-33%

Confidential

## Option 1D

Proposed		Net Change	
-£	2,552	£	25,346
-£	2,102	-£	178
-£	10,729	-£	488
-£	16,800	£	166,837
£	-	£	-
-£	413,126	£	-
-£	293,842	-£	13,368
-£	2,009,921	-£	2,074
-£	3,720	£	-
-£	291,407	£	-
-£	17,894	-£	738
-£	2,119	-£	2,083
-£	8,744,107	-£	397,791
-£	4,838,773	-£	430,915
-£	1,036,222	-£	182,436
£	-		
-£	922,790		
-£	24,291	-£	1,001
£	-		
-£	18,630,396	-£	838,889

## Option 1E

Proposed	
-£	4,136
-£	2,091
-£	10,734
-£	27,227
£	-
-£	413,126
-£	293,984
-£	2,009,791
-£	3,720
-£	291,407
-£	17,848
-£	1,988
-£	8,748,309
-£	4,833,275
-£	1,031,698
£	-
-£	922,790
-£	24,229
£	-
-£	18,636,355

Category Difference	£
Health and Safety	£ 25,167
Socio-Economic	£ 150,908
Environmental	£ -
Wider Economic and Engineering	-£ 1,014,964

Category Difference
Health and Safety
Socio-Economic
Environmental
Wider Economic and Engineering

Category Difference	%
Health and Safety	-163%
Socio-Economic	-105%
Environmental	-100%
Wider Economic and Engineering	-93%

Category Difference
Health and Safety
Socio-Economic
Environmental
Wider Economic and Engineering

Impact Level Difference	£
Impact 1	£ 25,346
Impact 2	-£ 178
Impact 3	-£ 488
Impact 4	£ 166,837
Impact 5	£ -
Impact 6	£ -
Impact 7	-£ 13,368
Impact 8	-£ 2,074
Impact 9	£ -
Impact 10	£ -
Impact 11	-£ 738
Impact 12	-£ 2,083
Impact 13	-£ 397,791
Impact 14	-£ 430,915

Impact Level Difference
Impact 1
Impact 2
Impact 3
Impact 4
Impact 5
Impact 6
Impact 7
Impact 8
Impact 9
Impact 10
Impact 11
Impact 12
Impact 13
Impact 14

Impact 15	-£	182,436
Impact 16	-£	1,001
Impact 17	£	-
Impact 18	-£	1,001

Impact 15
Impact 16
Impact 17
Impact 18

Impact Level Difference	%
Impact 1	-91%
Impact 2	9%
Impact 3	5%
Impact 4	-91%
Impact 5	#DIV/0!
Impact 6	0%
Impact 7	5%
Impact 8	0%
Impact 9	0%
Impact 10	0%
Impact 11	4%
Impact 12	5884%
Impact 13	5%
Impact 14	10%
Impact 15	21%
Impact 16	#DIV/0!
Impact 17	0%
Impact 18	4%

Impact Level Difference
Impact 1
Impact 2
Impact 3
Impact 4
Impact 5
Impact 6
Impact 7
Impact 8
Impact 9
Impact 10
Impact 11
Impact 12
Impact 13
Impact 14
Impact 15
Impact 16
Impact 17
Impact 18

Confidential



## Option 1F

Net Change	
£	23,762
-£	167
-£	493
£	156,410
£	-
£	-
-£	13,509
-£	1,944
£	-
£	-
-£	691
-£	1,953
-£	401,993
-£	425,417
-£	177,913
£	-
£	-
-£	939
-£	844,848

Proposed		Net Change	
-£	5,412	£	22,486
-£	2,082	-£	158
-£	10,689	-£	448
-£	35,627	£	148,010
£	-	£	-
-£	413,126	£	-
-£	292,754	-£	12,279
-£	2,009,687	-£	1,840
-£	3,720	£	-
-£	291,407	£	-
-£	17,811	-£	654
-£	1,883	-£	1,848
-£	8,711,712	-£	365,396
-£	4,799,360	-£	391,502
-£	1,018,591	-£	164,806
£	-	£	-
-£	922,790	£	-
-£	24,178	-£	888
£	-	£	-
-£	18,560,831	-£	769,324

£	
£	23,101
£	140,957
-£	404,638
-£	1,006,262

Category Difference		£	
Health and Safety		£	21,879
Socio-Economic		£	133,892
Environmental		-£	367,898
Wider Economic and Engineering		-£	922,592

%	
-58%	
-5%	
131%	
7%	

Category Difference		%	
Health and Safety			-55%
Socio-Economic			-5%
Environmental			119%
Wider Economic and Engineering			6%

£	
£	23,762
-£	167
-£	493
£	156,410
£	-
£	-
-£	13,509
-£	1,944
£	-
£	-
-£	691
-£	1,953
-£	401,993
-£	425,417

Impact Level Difference		£	
Impact 1		£	22,486
Impact 2		-£	158
Impact 3		-£	448
Impact 4		£	148,010
Impact 5		£	-
Impact 6		£	-
Impact 7		-£	12,279
Impact 8		-£	1,840
Impact 9		£	-
Impact 10		£	-
Impact 11		-£	654
Impact 12		-£	1,848
Impact 13		-£	365,396
Impact 14		-£	391,502

-£	177,913
£	-
£	-
-£	939

Impact 15	-£	164,806
Impact 16	£	-
Impact 17	£	-
Impact 18	-£	888

%
-85%
9%
5%
-85%
#DIV/0!
0%
5%
0%
0%
0%
4%
5517%
5%
10%
21%
#DIV/0!
0%
4%

Impact Level Difference	%
Impact 1	-81%
Impact 2	8%
Impact 3	4%
Impact 4	-81%
Impact 5	#DIV/0!
Impact 6	0%
Impact 7	4%
Impact 8	0%
Impact 9	0%
Impact 10	0%
Impact 11	4%
Impact 12	5220%
Impact 13	4%
Impact 14	9%
Impact 15	19%
Impact 16	#DIV/0!
Impact 17	0%
Impact 18	4%

Confidential

Option 1G

Proposed		Net Change	
-£	6,688	£	21,209
-£	2,073	-£	149
-£	10,644	-£	403
-£	44,027	£	139,611
£	-	£	-
-£	413,126	£	-
-£	291,524	-£	11,049
-£	2,009,583	-£	1,735
-£	3,720	£	-
-£	291,407	£	-
-£	17,774	-£	617
-£	1,779	-£	1,743
-£	8,675,115	-£	328,799
-£	4,765,444	-£	357,586
-£	1,005,484	-£	151,699
£	-	£	-
-£	922,790	£	-
-£	24,128	-£	838
£	-		
-£	18,485,307	-£	693,800

Category Difference	£
Health and Safety	£ 20,657
Socio-Economic	£ 126,826
Environmental	-£ 331,159
Wider Economic and Engineering	-£ 838,922

Category Difference	%
Health and Safety	-52%
Socio-Economic	-4%
Environmental	107%
Wider Economic and Engineering	6%

Impact Level Difference	£
Impact 1	£ 21,209
Impact 2	-£ 149
Impact 3	-£ 403
Impact 4	£ 139,611
Impact 5	£ -
Impact 6	£ -
Impact 7	-£ 11,049
Impact 8	-£ 1,735
Impact 9	£ -
Impact 10	£ -
Impact 11	-£ 617
Impact 12	-£ 1,743
Impact 13	-£ 328,799
Impact 14	-£ 357,586

Impact 15	-£	151,699
Impact 16	£	-
Impact 17	£	-
Impact 18	-£	838

Impact Level Difference	%
Impact 1	-76%
Impact 2	8%
Impact 3	4%
Impact 4	-76%
Impact 5	#DIV/0!
Impact 6	0%
Impact 7	4%
Impact 8	0%
Impact 9	0%
Impact 10	0%
Impact 11	4%
Impact 12	4924%
Impact 13	4%
Impact 14	8%
Impact 15	18%
Impact 16	#DIV/0!
Impact 17	0%
Impact 18	4%

Option 1H

Proposed		Net Change	
-£	8,273	£	19,625
-£	2,062	-£	138
-£	10,649	-£	409
-£	54,454	£	129,183
£	-	£	-
-£	413,126	£	-
-£	291,665	-£	11,190
-£	2,009,453	-£	1,606
-£	3,720	£	-
-£	291,407	£	-
-£	17,728	-£	571
-£	1,648	-£	1,613
-£	8,679,317	-£	333,001
-£	4,759,947	-£	352,089
-£	1,000,961	-£	147,176
£	-	£	-
-£	922,790	£	-
-£	24,065	-£	775
£	-		
-£	18,491,266	-£	699,759

Category Difference	£
Health and Safety	£ 19,079
Socio-Economic	£ 116,387
Environmental	-£ 335,185
Wider Economic and Engineering	-£ 833,041

Category Difference	%
Health and Safety	-48%
Socio-Economic	-4%
Environmental	109%
Wider Economic and Engineering	6%

Impact Level Difference	£
Impact 1	£ 19,625
Impact 2	-£ 138
Impact 3	-£ 409
Impact 4	£ 129,183
Impact 5	£ -
Impact 6	£ -
Impact 7	-£ 11,190
Impact 8	-£ 1,606
Impact 9	£ -
Impact 10	£ -
Impact 11	-£ 571
Impact 12	-£ 1,613
Impact 13	-£ 333,001
Impact 14	-£ 352,089

Impact 15	-£	147,176
Impact 16	£	-
Impact 17	£	-
Impact 18	-£	775

Impact Level Difference	%
Impact 1	-70%
Impact 2	7%
Impact 3	4%
Impact 4	-70%
Impact 5	#DIV/0!
Impact 6	0%
Impact 7	4%
Impact 8	0%
Impact 9	0%
Impact 10	0%
Impact 11	3%
Impact 12	4556%
Impact 13	4%
Impact 14	8%
Impact 15	17%
Impact 16	#DIV/0!
Impact 17	0%
Impact 18	3%

Option 1I

Proposed		Net Change	
-£	19,097	£	8,801
-£	1,986	-£	62
-£	10,390	-£	149
-£	125,707	£	57,930
£	-	£	-
-£	413,126	£	-
-£	284,568	-£	4,094
-£	2,008,567	-£	720
-£	3,720	£	-
-£	291,407	£	-
-£	17,413	-£	256
-£	759	-£	723
-£	8,468,137	-£	121,822
-£	4,545,460	-£	137,602
-£	913,273	-£	59,488
£	-	£	-
-£	922,790	£	-
-£	23,638	-£	348
£	-		
-£	18,050,040	-£	258,533

Category Difference	£
Health and Safety	£ 8,589
Socio-Economic	£ 53,116
Environmental	-£ 122,801
Wider Economic and Engineering	-£ 319,259

Category Difference	%
Health and Safety	-21%
Socio-Economic	-2%
Environmental	40%
Wider Economic and Engineering	2%

Impact Level Difference	£
Impact 1	£ 8,801
Impact 2	-£ 62
Impact 3	-£ 149
Impact 4	£ 57,930
Impact 5	£ -
Impact 6	£ -
Impact 7	-£ 4,094
Impact 8	-£ 720
Impact 9	£ -
Impact 10	£ -
Impact 11	-£ 256
Impact 12	-£ 723
Impact 13	-£ 121,822
Impact 14	-£ 137,602

Impact 15	-£	59,488
Impact 16	£	-
Impact 17	£	-
Impact 18	-£	348

Impact Level Difference	%
Impact 1	-32%
Impact 2	3%
Impact 3	1%
Impact 4	-32%
Impact 5	#DIV/0!
Impact 6	0%
Impact 7	1%
Impact 8	0%
Impact 9	0%
Impact 10	0%
Impact 11	1%
Impact 12	2043%
Impact 13	1%
Impact 14	3%
Impact 15	7%
Impact 16	#DIV/0!
Impact 17	0%
Impact 18	1%



## Option 1J

Proposed		Net Change
-£	23,762	£ 4,136
-£	1,953	-£ 29
-£	10,325	-£ 85
-£	156,410	£ 27,227
£	-	£ -
-£	413,126	£ -
-£	282,793	-£ 2,318
-£	2,008,186	-£ 338
-£	3,720	£ -
-£	291,407	£ -
-£	17,277	-£ 120
-£	375	-£ 340
-£	8,415,308	-£ 68,992
-£	4,481,186	-£ 73,328
-£	884,522	-£ 30,737
£	-	£ -
-£	922,790	£ -
-£	23,454	-£ 163
£	-	
-£	17,936,596	#####

Category Difference	£
Health and Safety	£ 4,023
Socio-Economic	£ 24,570
Environmental	-£ 69,453
Wider Economic and Engineering	#####

Category Difference	%
Health and Safety	-10%
Socio-Economic	-1%
Environmental	23%
Wider Economic and Engineering	1%

Impact Level Difference	£
Impact 1	£ 4,136
Impact 2	-£ 29
Impact 3	-£ 85
Impact 4	£ 27,227
Impact 5	£ -
Impact 6	£ -
Impact 7	-£ 2,318
Impact 8	-£ 338
Impact 9	£ -
Impact 10	£ -
Impact 11	-£ 120
Impact 12	-£ 340
Impact 13	-£ 68,992
Impact 14	-£ 73,328

Impact 15	-£ 30,737
Impact 16	£ -
Impact 17	£ -
Impact 18	-£ 163

Impact Level Difference	%
Impact 1	-15%
Impact 2	2%
Impact 3	1%
Impact 4	-15%
Impact 5	#DIV/0!
Impact 6	0%
Impact 7	1%
Impact 8	0%
Impact 9	0%
Impact 10	0%
Impact 11	1%
Impact 12	960%
Impact 13	1%
Impact 14	2%
Impact 15	4%
Impact 16	#DIV/0!
Impact 17	0%
Impact 18	1%

Confidential

## Option 1K

Proposed		Net Change	
-£	10,077	£	17,821
-£	2,049	-£	125
-£	10,624	-£	384
-£	66,329	£	117,308
£	-	£	-
-£	413,126	£	-
-£	290,978	-£	10,504
-£	2,009,305	-£	1,458
-£	3,720	£	-
-£	291,407	£	-
-£	17,675	-£	519
-£	1,500	-£	1,465
-£	8,658,883	-£	312,567
-£	4,735,086	-£	327,228
-£	989,841	-£	136,055
£	-	£	-
-£	922,790	£	-
-£	23,994	-£	704
£	-		
-£	18,447,386	-£	655,879

Category Difference	£
Health and Safety	£ 17,312
Socio-Economic	£ 105,346
Environmental	-£ 314,550
Wider Economic and Engineering	-£ 776,554

Category Difference	%
Health and Safety	-43%
Socio-Economic	-4%
Environmental	102%
Wider Economic and Engineering	5%

Impact Level Difference	£
Impact 1	£ 17,821
Impact 2	-£ 125
Impact 3	-£ 384
Impact 4	£ 117,308
Impact 5	£ -
Impact 6	£ -
Impact 7	-£ 10,504
Impact 8	-£ 1,458
Impact 9	£ -
Impact 10	£ -
Impact 11	-£ 519
Impact 12	-£ 1,465
Impact 13	-£ 312,567
Impact 14	-£ 327,228

Impact 15	-£	136,055
Impact 16	£	-
Impact 17	£	-
Impact 18	-£	704

Impact Level Difference	%
Impact 1	-64%
Impact 2	7%
Impact 3	4%
Impact 4	-64%
Impact 5	#DIV/0!
Impact 6	0%
Impact 7	4%
Impact 8	0%
Impact 9	0%
Impact 10	0%
Impact 11	3%
Impact 12	4137%
Impact 13	4%
Impact 14	7%
Impact 15	16%
Impact 16	#DIV/0!
Impact 17	0%
Impact 18	3%

Length	#REF!
Category	Number
●	Impact 1
●	Impact 2
●	Impact 3
●	Impact 4
●	Impact 5
●	Impact 6
●	Impact 7
●	Impact 8
●	Impact 9
●	Impact 10
●	Impact 11
●	Impact 12
●	Impact 13
●	Impact 14
●	Impact 15
●	Impact 16
●	Impact 17
●	Impact 18

Confidential

Category	Number
	Impact 1
	Impact 2
	Impact 3
	Impact 4
	Impact 5
	Impact 6
	Impact 7
	Impact 8
	Impact 9
	Impact 10
	Impact 11
	Impact 12
	Impact 13
	Impact 14

Impact 15  
Impact 16  
Impact 17  
Impact 18

0

Impact 1  
Impact 2  
Impact 3  
Impact 4  
Impact 5  
Impact 6  
Impact 7  
Impact 8  
Impact 9  
Impact 10  
Impact 11  
Impact 12  
Impact 13  
Impact 14  
Impact 15  
Impact 16  
Impact 17  
Impact 18

Confidential

Description
-------------

<p>Decreased health and safety risk to marine vessel operators from cable snagging</p> <p>Change in health and safety risk to cable laying vessel operators</p> <p>Increased health costs due to increase in fuel poverty rates</p> <p>Decreased damage costs to marine vessel operators from cable snagging</p> <p>Decreased risk of energy outages for island communities due to lower fault rates</p> <p>Increased distribution costs leading to lower renewable generation on islands and lower Gross Value Added (GVA)</p> <p>Increased cost of fuel poverty eradication programme due to higher fuel bills</p> <p>Increased cost to fishing operators due to loss of access to fishing grounds during cable installation</p> <p>Decreased risk of energy outages for renewable generators due to lower fault rates</p> <p>Increased distribution costs leading to lower renewable generation on islands and higher Greenhouse Gas (GHG) emissions</p> <p>Change in GHG emissions from use of backup diesel generators</p> <p>Change in costs to seabed and marine environment</p> <p>Increased installation costs associated with protection</p> <p>Change in repair costs</p> <p>Increased cost of decommissioning associated with protection</p> <p>Decreased risk of outage charges due to lower fault rates</p> <p>Increased cost of maintenance surveys associated with protection</p> <p>Change in use costs of using backup diesel generators</p>
--

<b>Net Present Value (NPV)</b>
--------------------------------

Description
-------------

<p>Decreased health and safety risk to marine vessel operators from cable snagging</p> <p>Change in health and safety risk to cable laying vessel operators</p> <p>Increased health costs due to increase in fuel poverty rates</p> <p>Decreased damage costs to marine vessel operators from cable snagging</p> <p>Decreased risk of energy outages for island communities due to lower fault rates</p> <p>Increased distribution costs leading to lower renewable generation on islands and lower Gross Value Added (GVA)</p> <p>Increased cost of fuel poverty eradication programme due to higher fuel bills</p> <p>Increased cost to fishing operators due to loss of access to fishing grounds during cable installation</p> <p>Decreased risk of energy outages for renewable generators due to lower fault rates</p> <p>Increased distribution costs leading to lower renewable generation on islands and higher Greenhouse Gas (GHG) emissions</p> <p>Change in GHG emissions from use of backup diesel generators</p> <p>Change in costs to seabed and marine environment</p> <p>Increased installation costs associated with protection</p> <p>Change in repair costs</p>
--

Increased cost of decommissioning associated with protection  
Decreased risk of outage charges due to lower fault rates  
Increased cost of maintenance surveys associated with protection  
Change in use costs of using backup diesel generators

---

---

Net Present Value (NPV)

Decreased health and safety risk to marine vessel operators from cable snagging  
Change in health and safety risk to cable laying vessel operators  
Increased health costs due to increase in fuel poverty rates  
Decreased damage costs to marine vessel operators from cable snagging  
Decreased risk of energy outages for island communities due to lower fault rates  
Increased distribution costs leading to lower renewable generation on islands and lower Gross Value Added (GVA)  
Increased cost of fuel poverty eradication programme due to higher fuel bills  
Increased cost to fishing operators due to loss of access to fishing grounds during cable installation  
Decreased risk of energy outages for renewable generators due to lower fault rates  
Increased distribution costs leading to lower renewable generation on islands and higher Greenhouse Gas (GHG) emissions  
Change in GHG emissions from use of backup diesel generators  
Change in costs to seabed and marine environment  
Increased installation costs associated with protection  
Change in repair costs  
Increased cost of decommissioning associated with protection  
Decreased risk of outage charges due to lower fault rates  
Increased cost of maintenance surveys associated with protection  
Change in use costs of using backup diesel generators

---

---



Surface lay

No protection	
-£	27,898
-£	1,924
-£	10,241
-£	183,637
£	-
-£	413,126
-£	280,475
-£	2,007,847
-£	3,720
-£	291,407
-£	17,157
-£	35
-£	8,346,316
-£	4,407,858
-£	853,785
£	-
-£	922,790
-£	23,290
£	-
-£	17,791,507

'A)

3) emissions

Category Difference	£
Health and Safety	-£ 40,062
Socio-Economic	-£ 2,888,806
Environmental	-£ 8,363,508
Wider Economic and Engin	-£ 14,554,039

Category Difference	%
Health and Safety	100%
Socio-Economic	100%
Environmental	2710%
Wider Economic and Engin	100%

Impact Level Difference	£
Impact 1	-£ 27,898
Impact 2	-£ 1,924
Impact 3	-£ 10,241
Impact 4	-£ 183,637
Impact 5	£ -
Impact 6	-£ 413,126
Impact 7	-£ 280,475
Impact 8	-£ 2,007,847
Impact 9	-£ 3,720
Impact 10	-£ 291,407
Impact 11	-£ 17,157
Impact 12	-£ 35
Impact 13	-£ 8,346,316
Impact 14	-£ 4,407,858

'A)

3) emiss

Impact 15	-£	853,785
Impact 16	£	-
Impact 17	-£	922,790
Impact 18	-£	23,290

Impact Level Difference %	
Impact 1	100%
Impact 2	100%
Impact 3	100%
Impact 4	100%
Impact 5	#DIV/0!
'A) Impact 6	100%
Impact 7	100%
Impact 8	100%
Impact 9	100%
;) emiss Impact 10	100%
Impact 11	100%
Impact 12	100%
Impact 13	100%
Impact 14	100%
Impact 15	100%
Impact 16	#DIV/0!
Impact 17	100%
Impact 18	100%

Confidential

## Option 2A

## Option 2B

Proposed		Net Change	
-£	1,821	£	26,077
-£	3,254	-£	1,330
-£	16,579	-£	6,338
-£	8,400	£	175,237
£	-	£	-
-£	1,622,222	-£	1,209,096
-£	454,056	-£	173,581
-£	2,134,653	-£	126,806
-£	3,665	£	55
-£	1,144,267	-£	852,860
-£	62,261	-£	45,105
-£	2,381	-£	2,345
-£	13,511,714	-£	5,165,398
-£	6,684,672	-£	2,276,814
-£	1,092,611	-£	238,826
£	-	£	-
-£	922,790	£	-
-£	84,519	-£	61,229
£	-		
-£	27,749,866	-£	9,958,359

Proposed	
-£	4,681
-£	3,234
-£	16,539
-£	27,227
£	-
-£	1,622,222
-£	452,967
-£	2,134,419
-£	3,665
-£	1,144,267
-£	62,178
-£	2,146
-£	13,479,319
-£	6,645,259
-£	1,074,981
£	-
-£	922,790
-£	84,406
£	-
-£	27,680,301

Category Difference	£
Health and Safety	£ 18,408
Socio-Economic	-£ 1,334,191
Environmental	-£ 5,212,848
Wider Economic and Engineering	-£ 7,742,267

Category Difference
Health and Safety
Socio-Economic
Environmental
Wider Economic and Engineering

Category Difference	%
Health and Safety	-46%
Socio-Economic	46%
Environmental	1689%
Wider Economic and Engineering	53%

Category Difference
Health and Safety
Socio-Economic
Environmental
Wider Economic and Engineering

Impact Level Difference	£
Impact 1	£ 26,077
Impact 2	-£ 1,330
Impact 3	-£ 6,338
Impact 4	£ 175,237
Impact 5	£ -
Impact 6	-£ 1,209,096
Impact 7	-£ 173,581
Impact 8	-£ 126,806
Impact 9	£ 55
Impact 10	-£ 852,860
Impact 11	-£ 45,105
Impact 12	-£ 2,345
Impact 13	-£ 5,165,398
Impact 14	-£ 2,276,814

Impact Level Difference
Impact 1
Impact 2
Impact 3
Impact 4
Impact 5
Impact 6
Impact 7
Impact 8
Impact 9
Impact 10
Impact 11
Impact 12
Impact 13
Impact 14

Impact 15	-£ 238,826
Impact 16	£ -
Impact 17	£ -
Impact 18	-£ 61,229

Impact 15
Impact 16
Impact 17
Impact 18

Impact Level Difference	%
Impact 1	-93%
Impact 2	69%
Impact 3	62%
Impact 4	-95%
Impact 5	#DIV/0!
Impact 6	293%
Impact 7	62%
Impact 8	6%
Impact 9	-1%
Impact 10	293%
Impact 11	263%
Impact 12	6625%
Impact 13	62%
Impact 14	52%
Impact 15	28%
Impact 16	#DIV/0!
Impact 17	0%
Impact 18	263%

Impact Level Difference
Impact 1
Impact 2
Impact 3
Impact 4
Impact 5
Impact 6
Impact 7
Impact 8
Impact 9
Impact 10
Impact 11
Impact 12
Impact 13
Impact 14
Impact 15
Impact 16
Impact 17
Impact 18

Confidential

Option 2C

Net Change	
£	23,216
-£	1,310
-£	6,298
£	156,410
£	-
-£	1,209,096
-£	172,493
-£	126,572
£	55
-£	852,860
-£	45,021
-£	2,110
-£	5,133,003
-£	2,237,401
-£	221,195
£	-
£	-
-£	61,116
-£	9,888,794

Proposed	Net Change
-£	5,958
-£	3,225
-£	16,494
-£	35,627
£	-
-£	1,622,222
-£	451,737
-£	2,134,315
-£	3,665
-£	1,144,267
-£	62,141
-£	2,041
-£	13,442,722
-£	6,611,344
-£	1,061,874
£	-
-£	922,790
-£	84,356
£	-
-£	27,604,777

£	21,940
-£	1,301
-£	6,253
£	148,010
£	-
-£	1,209,096
-£	171,263
-£	126,468
£	55
-£	852,860
-£	44,984
-£	2,005
-£	5,096,406
-£	2,203,485
-£	208,089
£	-
£	-
-£	61,066
-£	9,813,270

£	
£	15,608
-£	1,351,695
-£	5,180,135
-£	7,652,715

Category Difference	£
Health and Safety	£ 14,386
Socio-Economic	-£ 1,358,761
Environmental	-£ 5,143,396
Wider Economic and Engineering	-£ 7,569,046

%	
-39%	
47%	
1679%	
53%	

Category Difference	%
Health and Safety	-36%
Socio-Economic	47%
Environmental	1667%
Wider Economic and Engineering	52%

£	
£	23,216
-£	1,310
-£	6,298
£	156,410
£	-
-£	1,209,096
-£	172,493
-£	126,572
£	55
-£	852,860
-£	45,021
-£	2,110
-£	5,133,003
-£	2,237,401

Impact Level Difference	£
Impact 1	£ 21,940
Impact 2	-£ 1,301
Impact 3	-£ 6,253
Impact 4	£ 148,010
Impact 5	£ -
Impact 6	-£ 1,209,096
Impact 7	-£ 171,263
Impact 8	-£ 126,468
Impact 9	£ 55
Impact 10	-£ 852,860
Impact 11	-£ 44,984
Impact 12	-£ 2,005
Impact 13	-£ 5,096,406
Impact 14	-£ 2,203,485

-£	221,195
£	-
£	-
-£	61,116

Impact 15	-£	208,089
Impact 16	£	-
Impact 17	£	-
Impact 18	-£	61,066

%
-83%
68%
62%
-85%
#DIV/0!
293%
62%
6%
-1%
293%
262%
5961%
62%
51%
26%
#DIV/0!
0%
262%

Impact Level Difference		%
Impact 1		-79%
Impact 2		68%
Impact 3		61%
Impact 4		-81%
Impact 5		#DIV/0!
Impact 6		293%
Impact 7		61%
Impact 8		6%
Impact 9		-1%
Impact 10		293%
Impact 11		262%
Impact 12		5665%
Impact 13		61%
Impact 14		50%
Impact 15		24%
Impact 16		#DIV/0!
Impact 17		0%
Impact 18		262%

Confidential

## Option 2D

Proposed	Net Change
-£ 5,227	£ 22,671
-£ 4,377	-£ 2,453
-£ 22,344	-£ 12,103
-£ 27,227	£ 156,410
£ -	£ -
-£ 2,831,318	-£ 2,418,192
-£ 611,951	-£ 331,476
-£ 2,259,047	-£ 251,200
-£ 3,610	£ 110
-£ 1,997,127	-£ 1,705,720
-£ 106,508	-£ 89,351
-£ 2,303	-£ 2,268
-£ 18,210,329	-£ 9,864,013
-£ 8,457,243	-£ 4,049,385
-£ 1,118,263	-£ 264,478
£ -	£ -
-£ 922,790	£ -
-£ 144,583	-£ 121,293
£ -	£ -
-£ 36,724,247	-£ 18,932,740

## Option 2E

Proposed	Net Change
-£ 1,276	£ 22,671
-£ 6,768	-£ 2,453
-£ 22,039	-£ 12,103
-£ 8,400	£ 156,410
£ -	£ -
-£ 3,075,171	-£ 2,418,192
-£ 603,614	-£ 331,476
-£ 2,252,798	-£ 251,200
-£ 3,599	£ 110
-£ 2,169,133	-£ 1,705,720
-£ 104,285	-£ 89,351
-£ 2,433	-£ 2,268
-£ 17,962,253	-£ 9,864,013
-£ 11,642,040	-£ 4,049,385
-£ 3,221,179	-£ 264,478
£ -	£ -
-£ 922,790	£ -
-£ 141,566	-£ 121,293
£ -	£ -
-£ 42,139,346	-£ 18,932,740

Category Difference	£
Health and Safety	£ 8,115
Socio-Economic	-£ 2,844,348
Environmental	-£ 9,955,632
Wider Economic and Engineering	-£ 14,299,169

Category Difference	£
Health and Safety	£ 22,671
Socio-Economic	-£ 2,453
Environmental	-£ 12,103
Wider Economic and Engineering	£ 156,410

Category Difference	%
Health and Safety	-20%
Socio-Economic	98%
Environmental	3226%
Wider Economic and Engineering	98%

Category Difference	%
Health and Safety	-20%
Socio-Economic	98%
Environmental	3226%
Wider Economic and Engineering	98%

Impact Level Difference	£
Impact 1	£ 22,671
Impact 2	-£ 2,453
Impact 3	-£ 12,103
Impact 4	£ 156,410
Impact 5	£ -
Impact 6	-£ 2,418,192
Impact 7	-£ 331,476
Impact 8	-£ 251,200
Impact 9	£ 110
Impact 10	-£ 1,705,720
Impact 11	-£ 89,351
Impact 12	-£ 2,268
Impact 13	-£ 9,864,013
Impact 14	-£ 4,049,385

Impact Level Difference	£
Impact 1	£ 22,671
Impact 2	-£ 2,453
Impact 3	-£ 12,103
Impact 4	£ 156,410
Impact 5	£ -
Impact 6	-£ 2,418,192
Impact 7	-£ 331,476
Impact 8	-£ 251,200
Impact 9	£ 110
Impact 10	-£ 1,705,720
Impact 11	-£ 89,351
Impact 12	-£ 2,268
Impact 13	-£ 9,864,013
Impact 14	-£ 4,049,385

Impact 15	-£ 264,478
Impact 16	£ -
Impact 17	£ -
Impact 18	-£ 121,293

Impact 15
Impact 16
Impact 17
Impact 18

Impact Level Difference	%
Impact 1	-81%
Impact 2	128%
Impact 3	118%
Impact 4	-85%
Impact 5	#DIV/0!
Impact 6	585%
Impact 7	118%
Impact 8	13%
Impact 9	-3%
Impact 10	585%
Impact 11	521%
Impact 12	6405%
Impact 13	118%
Impact 14	92%
Impact 15	31%
Impact 16	#DIV/0!
Impact 17	0%
Impact 18	521%

Impact Level Difference
Impact 1
Impact 2
Impact 3
Impact 4
Impact 5
Impact 6
Impact 7
Impact 8
Impact 9
Impact 10
Impact 11
Impact 12
Impact 13
Impact 14
Impact 15
Impact 16
Impact 17
Impact 18

Confidential



Option 2F

Net Change	
£	26,622
-£	4,844
-£	11,799
£	175,237
£	-
-£	2,662,045
-£	323,140
-£	244,950
£	121
-£	1,877,726
-£	87,128
-£	2,398
-£	9,615,937
-£	7,234,182
-£	2,367,394
£	-
£	-
-£	118,276
-£	24,347,839

Proposed	Net Change
-£	4,136
-£	6,748
-£	21,999
-£	27,227
£	-
-£	3,075,171
-£	602,526
-£	2,252,564
-£	3,599
-£	2,169,133
-£	104,202
-£	2,198
-£	17,929,858
-£	11,602,627
-£	3,203,549
£	-
-£	922,790
-£	141,453
£	-
-£	42,069,781
-£	23,762
-£	4,824
-£	11,759
£	156,410
£	-
-£	2,662,045
-£	322,051
-£	244,716
£	121
-£	1,877,726
-£	87,045
-£	2,163
-£	9,583,542
-£	7,194,769
-£	2,349,764
£	-
£	-
-£	118,163
-£	24,278,274

£	
£	9,979
-£	3,054,777
-£	9,705,463
-£	19,335,789

Category Difference	£
Health and Safety	£ 7,179
Socio-Economic	-£ 3,072,281
Environmental	-£ 9,672,750
Wider Economic and Engineering	-£ 19,246,237

%	
-25%	
106%	
3145%	
133%	

Category Difference	%
Health and Safety	-18%
Socio-Economic	106%
Environmental	3134%
Wider Economic and Engineering	132%

£	
£	26,622
-£	4,844
-£	11,799
£	175,237
£	-
-£	2,662,045
-£	323,140
-£	244,950
£	121
-£	1,877,726
-£	87,128
-£	2,398
-£	9,615,937
-£	7,234,182

Impact Level Difference	£
Impact 1	£ 23,762
Impact 2	-£ 4,824
Impact 3	-£ 11,759
Impact 4	£ 156,410
Impact 5	£ -
Impact 6	-£ 2,662,045
Impact 7	-£ 322,051
Impact 8	-£ 244,716
Impact 9	£ 121
Impact 10	-£ 1,877,726
Impact 11	-£ 87,045
Impact 12	-£ 2,163
Impact 13	-£ 9,583,542
Impact 14	-£ 7,194,769

-£ 2,367,394
£ -
£ -
-£ 118,276

Impact 15	-£ 2,349,764
Impact 16	£ -
Impact 17	£ -
Impact 18	-£ 118,163

%
-95%
252%
115%
-95%
#DIV/0!
644%
115%
12%
-3%
644%
508%
6773%
115%
164%
277%
#DIV/0!
0%
508%

Impact Level Difference	%
Impact 1	-85%
Impact 2	251%
Impact 3	115%
Impact 4	-85%
Impact 5	#DIV/0!
Impact 6	644%
Impact 7	115%
Impact 8	12%
Impact 9	-3%
Impact 10	644%
Impact 11	507%
Impact 12	6109%
Impact 13	115%
Impact 14	163%
Impact 15	275%
Impact 16	#DIV/0!
Impact 17	0%
Impact 18	507%

Confidential

## Option 2G

Net Change	
-£	5,412
-£	6,739
-£	21,955
-£	35,627
£	-
-£	3,075,171
-£	601,296
-£	2,252,459
-£	3,599
-£	2,169,133
-£	104,165
-£	2,093
-£	17,893,260
-£	11,568,712
-£	3,190,442
£	-
-£	922,790
-£	141,402
£	-
-£	41,994,257

## Option 2H

Proposed	
-£	4,136
-£	11,405
-£	33,265
-£	27,227
£	-
-£	5,737,216
-£	911,068
-£	2,495,336
-£	3,478
-£	4,046,860
-£	190,556
-£	2,408
-£	27,111,406
-£	18,371,979
-£	5,375,400
£	-
-£	922,790
-£	258,677
£	-
-£	65,503,207

Category Difference	£
Health and Safety	£ 5,956
Socio-Economic	-£ 3,079,347
Environmental	-£ 9,636,010
Wider Economic and Engineering	-£ 19,162,567

Category Difference
Health and Safety
Socio-Economic
Environmental
Wider Economic and Engineering

Category Difference	%
Health and Safety	-15%
Socio-Economic	107%
Environmental	3123%
Wider Economic and Engineering	132%

Category Difference
Health and Safety
Socio-Economic
Environmental
Wider Economic and Engineering

Impact Level Difference	£
Impact 1	£ 22,486
Impact 2	-£ 4,815
Impact 3	-£ 11,714
Impact 4	£ 148,010
Impact 5	£ -
Impact 6	-£ 2,662,045
Impact 7	-£ 320,821
Impact 8	-£ 244,612
Impact 9	£ 121
Impact 10	-£ 1,877,726
Impact 11	-£ 87,008
Impact 12	-£ 2,058
Impact 13	-£ 9,546,945
Impact 14	-£ 7,160,854

Impact Level Difference
Impact 1
Impact 2
Impact 3
Impact 4
Impact 5
Impact 6
Impact 7
Impact 8
Impact 9
Impact 10
Impact 11
Impact 12
Impact 13
Impact 14

Impact 15	-£ 2,336,657
Impact 16	£ -
Impact 17	£ -
Impact 18	-£ 118,112

Impact 15
Impact 16
Impact 17
Impact 18

Impact Level Difference	%
Impact 1	-81%
Impact 2	250%
Impact 3	114%
Impact 4	-81%
Impact 5	#DIV/0!
Impact 6	644%
Impact 7	114%
Impact 8	12%
Impact 9	-3%
Impact 10	644%
Impact 11	507%
Impact 12	5813%
Impact 13	114%
Impact 14	162%
Impact 15	274%
Impact 16	#DIV/0!
Impact 17	0%
Impact 18	507%

Impact Level Difference
Impact 1
Impact 2
Impact 3
Impact 4
Impact 5
Impact 6
Impact 7
Impact 8
Impact 9
Impact 10
Impact 11
Impact 12
Impact 13
Impact 14
Impact 15
Impact 16
Impact 17
Impact 18

Confidential

Option 2I

Net Change	
£	23,762
-£	9,481
-£	23,024
£	156,410
£	-
-£	5,324,090
-£	630,594
-£	487,489
£	242
-£	3,755,453
-£	173,399
-£	2,372
-£	18,765,090
-£	13,964,121
-£	4,521,615
£	-
£	-
-£	235,387
-£	47,711,700

Proposed	Net Change
-£	6,323
-£	2,649
-£	13,573
-£	39,827
£	-
-£	1,027,211
-£	371,733
-£	2,060,713
-£	3,692
-£	759,003
-£	39,958
-£	1,910
-£	11,061,973
-£	5,690,647
-£	1,034,402
£	-
-£	922,790
-£	54,242
£	-
-£	23,090,646
£	21,575
-£	725
-£	3,332
£	143,810
£	-
-£	614,085
-£	91,259
-£	52,866
£	28
-£	467,597
-£	22,801
-£	1,874
-£	2,715,657
-£	1,282,789
-£	180,617
£	-
£	-
-£	30,952
-£	5,299,139

£	
-£	8,744
-£	6,285,520
-£	18,940,861
-£	37,486,213

Category Difference	£
Health and Safety	£ 17,518
Socio-Economic	-£ 614,371
Environmental	-£ 2,740,332
Wider Economic and Engineering	-£ 4,210,014

%	
22%	
218%	
6138%	
258%	

Category Difference	%
Health and Safety	-44%
Socio-Economic	21%
Environmental	888%
Wider Economic and Engineering	29%

£	
£	23,762
-£	9,481
-£	23,024
£	156,410
£	-
-£	5,324,090
-£	630,594
-£	487,489
£	242
-£	3,755,453
-£	173,399
-£	2,372
-£	18,765,090
-£	13,964,121

Impact Level Difference	£
Impact 1	£ 21,575
Impact 2	-£ 725
Impact 3	-£ 3,332
Impact 4	£ 143,810
Impact 5	£ -
Impact 6	-£ 614,085
Impact 7	-£ 91,259
Impact 8	-£ 52,866
Impact 9	£ 28
Impact 10	-£ 467,597
Impact 11	-£ 22,801
Impact 12	-£ 1,874
Impact 13	-£ 2,715,657
Impact 14	-£ 1,282,789

-£	4,521,615
£	-
£	-
-£	235,387

Impact 15	-£	180,617
Impact 16	£	-
Impact 17	£	-
Impact 18	-£	30,952

%
-85%
493%
225%
-85%
#DIV/0!
1289%
225%
24%
-7%
1289%
1011%
6702%
225%
317%
530%
#DIV/0!
0%
1011%

Impact Level Difference	%
Impact 1	-77%
Impact 2	38%
Impact 3	33%
Impact 4	-78%
Impact 5	#DIV/0!
Impact 6	149%
Impact 7	33%
Impact 8	3%
Impact 9	-1%
Impact 10	160%
Impact 11	133%
Impact 12	5294%
Impact 13	33%
Impact 14	29%
Impact 15	21%
Impact 16	#DIV/0!
Impact 17	0%
Impact 18	133%

Confidential



Impact 15	-£ 1,278,735
Impact 16	£ -
Impact 17	£ -
Impact 18	-£ 89,589

Impact 15	
Impact 16	
Impact 17	
Impact 18	

Impact Level Difference	%
Impact 1	-80%
Impact 2	159%
Impact 3	88%
Impact 4	-81%
Impact 5	#DIV/0!
Impact 6	475%
Impact 7	88%
Impact 8	8%
Impact 9	-2%
Impact 10	487%
Impact 11	385%
Impact 12	5739%
Impact 13	88%
Impact 14	107%
Impact 15	150%
Impact 16	#DIV/0!
Impact 17	0%
Impact 18	385%

Impact Level Difference	
Impact 1	
Impact 2	
Impact 3	
Impact 4	
Impact 5	
Impact 6	
Impact 7	
Impact 8	
Impact 9	
Impact 10	
Impact 11	
Impact 12	
Impact 13	
Impact 14	
Impact 15	
Impact 16	
Impact 17	
Impact 18	

Confidential



Option 2L

Net Change
£ 27,898
£ 1,924
£ 10,241
£ 183,637
£ -
£ 413,126
£ 280,475
£ 2,007,847
£ 3,720
£ 291,407
£ 17,157
£ 35
£ 8,346,316
£ 4,407,858
£ 853,785
£ -
£ 922,790
£ 23,290
£17,791,507

Proposed	Net Change
	£ 27,898
	£ 1,924
	£ 10,241
	£ 183,637
	£ -
	£ 413,126
	£ 280,475
	£ 2,007,847
	£ 3,720
	£ 291,407
	£ 17,157
	£ 35
	£ 8,346,316
	£ 4,407,858
	£ 853,785
	£ -
	£ 922,790
	£ 23,290
	£ 17,791,507

£
£ 40,062
£ 2,888,806
£ 8,363,508
£14,554,039

Category Difference	£
Health and Safety	£ 40,062
Socio-Economic	£ 2,888,806
Environmental	£ 8,363,508
Wider Economic and Engineering	£ 14,554,039

%
-100%
-100%
-2710%
-100%

Category Difference	%
Health and Safety	-100%
Socio-Economic	-100%
Environmental	-2710%
Wider Economic and Engineering	-100%

£
£ 27,898
£ 1,924
£ 10,241
£ 183,637
£ -
£ 413,126
£ 280,475
£ 2,007,847
£ 3,720
£ 291,407
£ 17,157
£ 35
£ 8,346,316
£ 4,407,858

Impact Level Difference	£
Impact 1	£ 27,898
Impact 2	£ 1,924
Impact 3	£ 10,241
Impact 4	£ 183,637
Impact 5	£ -
Impact 6	£ 413,126
Impact 7	£ 280,475
Impact 8	£ 2,007,847
Impact 9	£ 3,720
Impact 10	£ 291,407
Impact 11	£ 17,157
Impact 12	£ 35
Impact 13	£ 8,346,316
Impact 14	£ 4,407,858

£ 853,785
£ -
£ 922,790
£ 23,290

Impact 15	£ 853,785
Impact 16	£ -
Impact 17	£ 922,790
Impact 18	£ 23,290

%
-100%
-100%
-100%
-100%
#DIV/0!
-100%
-100%
-100%
-100%
-100%
-100%
-100%
-100%
-100%
-100%
-100%
-100%
#DIV/0!
-100%
-100%

Impact Level Difference	%
Impact 1	-100%
Impact 2	-100%
Impact 3	-100%
Impact 4	-100%
Impact 5	#DIV/0!
Impact 6	-100%
Impact 7	-100%
Impact 8	-100%
Impact 9	-100%
Impact 10	-100%
Impact 11	-100%
Impact 12	-100%
Impact 13	-100%
Impact 14	-100%
Impact 15	-100%
Impact 16	#DIV/0!
Impact 17	-100%
Impact 18	-100%

Confidential

## Option 2M

Proposed	Net Change
	£ 27,898
	£ 1,924
	£ 10,241
	£ 183,637
	£ -
	£ 413,126
	£ 280,475
	£ 2,007,847
	£ 3,720
	£ 291,407
	£ 17,157
	£ 35
	£ 8,346,316
	£ 4,407,858
	£ 853,785
	£ -
	£ 922,790
	£ 23,290
	£ 17,791,507

## Option 2N

Proposed	Net Change
	£ 27,898
	£ 1,924
	£ 10,241
	£ 183,637
	£ -
	£ 413,126
	£ 280,475
	£ 2,007,847
	£ 3,720
	£ 291,407
	£ 17,157
	£ 35
	£ 8,346,316
	£ 4,407,858
	£ 853,785
	£ -
	£ 922,790
	£ 23,290
	£ 17,791,507

Category Difference	£
Health and Safety	£ 40,062
Socio-Economic	£ 2,888,806
Environmental	£ 8,363,508
Wider Economic and Engineering	£ 14,554,039

Category Difference	£
Health and Safety	£ 40,062
Socio-Economic	£ 2,888,806
Environmental	£ 8,363,508
Wider Economic and Engineering	£ 14,554,039

Category Difference	%
Health and Safety	-100%
Socio-Economic	-100%
Environmental	-2710%
Wider Economic and Engineering	-100%

Category Difference	%
Health and Safety	-100%
Socio-Economic	-100%
Environmental	-2710%
Wider Economic and Engineering	-100%

Impact Level Difference	£
Impact 1	£ 27,898
Impact 2	£ 1,924
Impact 3	£ 10,241
Impact 4	£ 183,637
Impact 5	£ -
Impact 6	£ 413,126
Impact 7	£ 280,475
Impact 8	£ 2,007,847
Impact 9	£ 3,720
Impact 10	£ 291,407
Impact 11	£ 17,157
Impact 12	£ 35
Impact 13	£ 8,346,316
Impact 14	£ 4,407,858

Impact Level Difference	£
Impact 1	£ 27,898
Impact 2	£ 1,924
Impact 3	£ 10,241
Impact 4	£ 183,637
Impact 5	£ -
Impact 6	£ 413,126
Impact 7	£ 280,475
Impact 8	£ 2,007,847
Impact 9	£ 3,720
Impact 10	£ 291,407
Impact 11	£ 17,157
Impact 12	£ 35
Impact 13	£ 8,346,316
Impact 14	£ 4,407,858

Impact 15	£ 853,785
Impact 16	£ -
Impact 17	£ 922,790
Impact 18	£ 23,290

Impact 15	£ 853,785
Impact 16	£ -
Impact 17	£ 922,790
Impact 18	£ 23,290

Impact Level Difference	%
Impact 1	-100%
Impact 2	-100%
Impact 3	-100%
Impact 4	-100%
Impact 5	#DIV/0!
Impact 6	-100%
Impact 7	-100%
Impact 8	-100%
Impact 9	-100%
Impact 10	-100%
Impact 11	-100%
Impact 12	-100%
Impact 13	-100%
Impact 14	-100%
Impact 15	-100%
Impact 16	#DIV/0!
Impact 17	-100%
Impact 18	-100%

Impact Level Difference	%
Impact 1	-100%
Impact 2	-100%
Impact 3	-100%
Impact 4	-100%
Impact 5	#DIV/0!
Impact 6	-100%
Impact 7	-100%
Impact 8	-100%
Impact 9	-100%
Impact 10	-100%
Impact 11	-100%
Impact 12	-100%
Impact 13	-100%
Impact 14	-100%
Impact 15	-100%
Impact 16	#DIV/0!
Impact 17	-100%
Impact 18	-100%

Option 2O

Proposed	Net Change
	£ 27,898
	£ 1,924
	£ 10,241
	£ 183,637
	£ -
	£ 413,126
	£ 280,475
	£ 2,007,847
	£ 3,720
	£ 291,407
	£ 17,157
	£ 35
	£ 8,346,316
	£ 4,407,858
	£ 853,785
	£ -
	£ 922,790
	£ 23,290
	£ 17,791,507

Option 2P

Proposed

Category Difference £	
Health and Safety	£ 40,062
Socio-Economic	£ 2,888,806
Environmental	£ 8,363,508
Wider Economic and	£ 14,554,039

Category Difference	
Health and Safety	
Socio-Economic	
Environmental	
Wider Economic and Engineer	

Category Difference %	
Health and Safety	-100%
Socio-Economic	-100%
Environmental	-2710%
Wider Economic and	-100%

Category Difference	
Health and Safety	
Socio-Economic	
Environmental	
Wider Economic and Engineer	

Impact Level Differ £	
Impact 1	£ 27,898
Impact 2	£ 1,924
Impact 3	£ 10,241
Impact 4	£ 183,637
Impact 5	£ -
Impact 6	£ 413,126
Impact 7	£ 280,475
Impact 8	£ 2,007,847
Impact 9	£ 3,720
Impact 10	£ 291,407
Impact 11	£ 17,157
Impact 12	£ 35
Impact 13	£ 8,346,316
Impact 14	£ 4,407,858

Impact Level Difference	
Impact 1	
Impact 2	
Impact 3	
Impact 4	
Impact 5	
Impact 6	
Impact 7	
Impact 8	
Impact 9	
Impact 10	
Impact 11	
Impact 12	
Impact 13	
Impact 14	

Impact 15	£	853,785
Impact 16	£	-
Impact 17	£	922,790
Impact 18	£	23,290

Impact 15
Impact 16
Impact 17
Impact 18

Impact Level Differ %	
Impact 1	-100%
Impact 2	-100%
Impact 3	-100%
Impact 4	-100%
Impact 5	#DIV/0!
Impact 6	-100%
Impact 7	-100%
Impact 8	-100%
Impact 9	-100%
Impact 10	-100%
Impact 11	-100%
Impact 12	-100%
Impact 13	-100%
Impact 14	-100%
Impact 15	-100%
Impact 16	#DIV/0!
Impact 17	-100%
Impact 18	-100%

Impact Level Difference
Impact 1
Impact 2
Impact 3
Impact 4
Impact 5
Impact 6
Impact 7
Impact 8
Impact 9
Impact 10
Impact 11
Impact 12
Impact 13
Impact 14
Impact 15
Impact 16
Impact 17
Impact 18

Confidential

Option 2Q

Net Change	
£	27,898
£	1,924
£	10,241
£	183,637
£	-
£	413,126
£	280,475
£	2,007,847
£	3,720
£	291,407
£	17,157
£	35
£	8,346,316
£	4,407,858
£	853,785
£	-
£	922,790
£	23,290
£	17,791,507

Proposed	Net Change
	£ 27,898
	£ 1,924
	£ 10,241
	£ 183,637
	£ -
	£ 413,126
	£ 280,475
	£ 2,007,847
	£ 3,720
	£ 291,407
	£ 17,157
	£ 35
	£ 8,346,316
	£ 4,407,858
	£ 853,785
	£ -
	£ 922,790
	£ 23,290
	£ 17,791,507

£	
£	40,062
£	2,888,806
£	8,363,508
£	14,554,039

Category Difference	£
Health and Safety	£ 40,062
Socio-Economic	£ 2,888,806
Environmental	£ 8,363,508
Wider Economic and Engineering	£ 14,554,039

%	
	-100%
	-100%
	-2710%
	-100%

Category Difference	%
Health and Safety	-100%
Socio-Economic	-100%
Environmental	-2710%
Wider Economic and Engineering	-100%

£	
£	27,898
£	1,924
£	10,241
£	183,637
£	-
£	413,126
£	280,475
£	2,007,847
£	3,720
£	291,407
£	17,157
£	35
£	8,346,316
£	4,407,858

Impact Level Difference	£
Impact 1	£ 27,898
Impact 2	£ 1,924
Impact 3	£ 10,241
Impact 4	£ 183,637
Impact 5	£ -
Impact 6	£ 413,126
Impact 7	£ 280,475
Impact 8	£ 2,007,847
Impact 9	£ 3,720
Impact 10	£ 291,407
Impact 11	£ 17,157
Impact 12	£ 35
Impact 13	£ 8,346,316
Impact 14	£ 4,407,858

£	853,785
£	-
£	922,790
£	23,290

Impact 15	£	853,785
Impact 16	£	-
Impact 17	£	922,790
Impact 18	£	23,290

%
-100%
-100%
-100%
-100%
#DIV/0!
-100%
-100%
-100%
-100%
-100%
-100%
-100%
-100%
-100%
-100%
-100%
-100%
-100%
#DIV/0!
-100%
-100%

Impact Level Difference	%
Impact 1	-100%
Impact 2	-100%
Impact 3	-100%
Impact 4	-100%
Impact 5	#DIV/0!
Impact 6	-100%
Impact 7	-100%
Impact 8	-100%
Impact 9	-100%
Impact 10	-100%
Impact 11	-100%
Impact 12	-100%
Impact 13	-100%
Impact 14	-100%
Impact 15	-100%
Impact 16	#DIV/0!
Impact 17	-100%
Impact 18	-100%

Confidential



## Option 2R

Proposed	Net Change
	£ 27,898
	£ 1,924
	£ 10,241
	£ 183,637
	£ -
	£ 413,126
	£ 280,475
	£ 2,007,847
	£ 3,720
	£ 291,407
	£ 17,157
	£ 35
	£ 8,346,316
	£ 4,407,858
	£ 853,785
	£ -
	£ 922,790
	£ 23,290
	£ 17,791,507

## Option 2S

Proposed

Category Difference	£
Health and Safety	£ 40,062
Socio-Economic	£ 2,888,806
Environmental	£ 8,363,508
Wider Economic and Engineering	£ 14,554,039

Category Difference
Health and Safety
Socio-Economic
Environmental
Wider Economic and Engineering

Category Difference	%
Health and Safety	-100%
Socio-Economic	-100%
Environmental	-2710%
Wider Economic and Engineering	-100%

Category Difference
Health and Safety
Socio-Economic
Environmental
Wider Economic and Engineering

Impact Level Difference	£
Impact 1	£ 27,898
Impact 2	£ 1,924
Impact 3	£ 10,241
Impact 4	£ 183,637
Impact 5	£ -
Impact 6	£ 413,126
Impact 7	£ 280,475
Impact 8	£ 2,007,847
Impact 9	£ 3,720
Impact 10	£ 291,407
Impact 11	£ 17,157
Impact 12	£ 35
Impact 13	£ 8,346,316
Impact 14	£ 4,407,858

Impact Level Difference
Impact 1
Impact 2
Impact 3
Impact 4
Impact 5
Impact 6
Impact 7
Impact 8
Impact 9
Impact 10
Impact 11
Impact 12
Impact 13
Impact 14

Impact 15	£ 853,785
Impact 16	£ -
Impact 17	£ 922,790
Impact 18	£ 23,290

Impact 15
Impact 16
Impact 17
Impact 18

Impact Level Difference	%
Impact 1	-100%
Impact 2	-100%
Impact 3	-100%
Impact 4	-100%
Impact 5	#DIV/0!
Impact 6	-100%
Impact 7	-100%
Impact 8	-100%
Impact 9	-100%
Impact 10	-100%
Impact 11	-100%
Impact 12	-100%
Impact 13	-100%
Impact 14	-100%
Impact 15	-100%
Impact 16	#DIV/0!
Impact 17	-100%
Impact 18	-100%

Impact Level Difference
Impact 1
Impact 2
Impact 3
Impact 4
Impact 5
Impact 6
Impact 7
Impact 8
Impact 9
Impact 10
Impact 11
Impact 12
Impact 13
Impact 14
Impact 15
Impact 16
Impact 17
Impact 18

Confidential

Option 2T

Net Change	
£	27,898
£	1,924
£	10,241
£	183,637
£	-
£	413,126
£	280,475
£	2,007,847
£	3,720
£	291,407
£	17,157
£	35
£	8,346,316
£	4,407,858
£	853,785
£	-
£	922,790
£	23,290
£	17,791,507

Proposed	Net Change
	£ 27,898
	£ 1,924
	£ 10,241
	£ 183,637
	£ -
	£ 413,126
	£ 280,475
	£ 2,007,847
	£ 3,720
	£ 291,407
	£ 17,157
	£ 35
	£ 8,346,316
	£ 4,407,858
	£ 853,785
	£ -
	£ 922,790
	£ 23,290
	£ 17,791,507

£	
£	40,062
£	2,888,806
£	8,363,508
£	14,554,039

Category Difference	£
Health and Safety	£ 40,062
Socio-Economic	£ 2,888,806
Environmental	£ 8,363,508
Wider Economic and Engineering	£ 14,554,039

%	
	-100%
	-100%
	-2710%
	-100%

Category Difference	%
Health and Safety	-100%
Socio-Economic	-100%
Environmental	-2710%
Wider Economic and Engineering	-100%

£	
£	27,898
£	1,924
£	10,241
£	183,637
£	-
£	413,126
£	280,475
£	2,007,847
£	3,720
£	291,407
£	17,157
£	35
£	8,346,316
£	4,407,858

Impact Level Difference	£
Impact 1	£ 27,898
Impact 2	£ 1,924
Impact 3	£ 10,241
Impact 4	£ 183,637
Impact 5	£ -
Impact 6	£ 413,126
Impact 7	£ 280,475
Impact 8	£ 2,007,847
Impact 9	£ 3,720
Impact 10	£ 291,407
Impact 11	£ 17,157
Impact 12	£ 35
Impact 13	£ 8,346,316
Impact 14	£ 4,407,858

£	853,785
£	-
£	922,790
£	23,290

Impact 15	£	853,785
Impact 16	£	-
Impact 17	£	922,790
Impact 18	£	23,290

%
-100%
-100%
-100%
-100%
#DIV/0!
-100%
-100%
-100%
-100%
-100%
-100%
-100%
-100%
-100%
-100%
-100%
#DIV/0!
-100%
-100%

Impact Level Difference	%
Impact 1	-100%
Impact 2	-100%
Impact 3	-100%
Impact 4	-100%
Impact 5	#DIV/0!
Impact 6	-100%
Impact 7	-100%
Impact 8	-100%
Impact 9	-100%
Impact 10	-100%
Impact 11	-100%
Impact 12	-100%
Impact 13	-100%
Impact 14	-100%
Impact 15	-100%
Impact 16	#DIV/0!
Impact 17	-100%
Impact 18	-100%

Confidential

Option 2U

Proposed	Net Change
	£ 27,898
	£ 1,924
	£ 10,241
	£ 183,637
	£ -
	£ 413,126
	£ 280,475
	£ 2,007,847
	£ 3,720
	£ 291,407
	£ 17,157
	£ 35
	£ 8,346,316
	£ 4,407,858
	£ 853,785
	£ -
	£ 922,790
	£ 23,290
	£ 17,791,507

Category Difference	£
Health and Safety	£ 40,062
Socio-Economic	£ 2,888,806
Environmental	£ 8,363,508
Wider Economic and Engineering	£ 14,554,039

Category Difference	%
Health and Safety	-100%
Socio-Economic	-100%
Environmental	-2710%
Wider Economic and Engineering	-100%

Impact Level Difference	£
Impact 1	£ 27,898
Impact 2	£ 1,924
Impact 3	£ 10,241
Impact 4	£ 183,637
Impact 5	£ -
Impact 6	£ 413,126
Impact 7	£ 280,475
Impact 8	£ 2,007,847
Impact 9	£ 3,720
Impact 10	£ 291,407
Impact 11	£ 17,157
Impact 12	£ 35
Impact 13	£ 8,346,316
Impact 14	£ 4,407,858

Impact 15	£ 853,785
Impact 16	£ -
Impact 17	£ 922,790
Impact 18	£ 23,290

Impact Level Difference	%
Impact 1	-100%
Impact 2	-100%
Impact 3	-100%
Impact 4	-100%
Impact 5	#DIV/0!
Impact 6	-100%
Impact 7	-100%
Impact 8	-100%
Impact 9	-100%
Impact 10	-100%
Impact 11	-100%
Impact 12	-100%
Impact 13	-100%
Impact 14	-100%
Impact 15	-100%
Impact 16	#DIV/0!
Impact 17	-100%
Impact 18	-100%



Impact 15	£ 853,785
Impact 16	£ -
Impact 17	£ 922,790
Impact 18	£ 23,290

Impact 15
Impact 16
Impact 17
Impact 18

Impact Level Difference	%
Impact 1	-100%
Impact 2	-100%
Impact 3	-100%
Impact 4	-100%
Impact 5	#DIV/0!
Impact 6	-100%
Impact 7	-100%
Impact 8	-100%
Impact 9	-100%
Impact 10	-100%
Impact 11	-100%
Impact 12	-100%
Impact 13	-100%
Impact 14	-100%
Impact 15	-100%
Impact 16	#DIV/0!
Impact 17	-100%
Impact 18	-100%

Impact Level Difference
Impact 1
Impact 2
Impact 3
Impact 4
Impact 5
Impact 6
Impact 7
Impact 8
Impact 9
Impact 10
Impact 11
Impact 12
Impact 13
Impact 14
Impact 15
Impact 16
Impact 17
Impact 18

Confidential



Option 2X

Net Change	
£	27,898
£	1,924
£	10,241
£	183,637
£	-
£	413,126
£	280,475
£	2,007,847
£	3,720
£	291,407
£	17,157
£	35
£	8,346,316
£	4,407,858
£	853,785
£	-
£	922,790
£	23,290
£	17,791,507

Proposed	Net Change
	£ 27,898
	£ 1,924
	£ 10,241
	£ 183,637
	£ -
	£ 413,126
	£ 280,475
	£ 2,007,847
	£ 3,720
	£ 291,407
	£ 17,157
	£ 35
	£ 8,346,316
	£ 4,407,858
	£ 853,785
	£ -
	£ 922,790
	£ 23,290
	£ 17,791,507

£	
£	40,062
£	2,888,806
£	8,363,508
£	14,554,039

Category Difference	£
Health and Safety	£ 40,062
Socio-Economic	£ 2,888,806
Environmental	£ 8,363,508
Wider Economic and Engineering	£ 14,554,039

%	
	-100%
	-100%
	-2710%
	-100%

Category Difference	%
Health and Safety	-100%
Socio-Economic	-100%
Environmental	-2710%
Wider Economic and Engineering	-100%

£	
£	27,898
£	1,924
£	10,241
£	183,637
£	-
£	413,126
£	280,475
£	2,007,847
£	3,720
£	291,407
£	17,157
£	35
£	8,346,316
£	4,407,858

Impact Level Difference	£
Impact 1	£ 27,898
Impact 2	£ 1,924
Impact 3	£ 10,241
Impact 4	£ 183,637
Impact 5	£ -
Impact 6	£ 413,126
Impact 7	£ 280,475
Impact 8	£ 2,007,847
Impact 9	£ 3,720
Impact 10	£ 291,407
Impact 11	£ 17,157
Impact 12	£ 35
Impact 13	£ 8,346,316
Impact 14	£ 4,407,858

£	853,785
£	-
£	922,790
£	23,290

Impact 15	£	853,785
Impact 16	£	-
Impact 17	£	922,790
Impact 18	£	23,290

%
-100%
-100%
-100%
-100%
#DIV/0!
-100%
-100%
-100%
-100%
-100%
-100%
-100%
-100%
-100%
-100%
-100%
-100%
#DIV/0!
-100%
-100%

Impact Level Difference	%
Impact 1	-100%
Impact 2	-100%
Impact 3	-100%
Impact 4	-100%
Impact 5	#DIV/0!
Impact 6	-100%
Impact 7	-100%
Impact 8	-100%
Impact 9	-100%
Impact 10	-100%
Impact 11	-100%
Impact 12	-100%
Impact 13	-100%
Impact 14	-100%
Impact 15	-100%
Impact 16	#DIV/0!
Impact 17	-100%
Impact 18	-100%

Confidential

## Option 2Y

Proposed	Net Change
	£ 27,898
	£ 1,924
	£ 10,241
	£ 183,637
	£ -
	£ 413,126
	£ 280,475
	£ 2,007,847
	£ 3,720
	£ 291,407
	£ 17,157
	£ 35
	£ 8,346,316
	£ 4,407,858
	£ 853,785
	£ -
	£ 922,790
	£ 23,290
	£ 17,791,507

## Option 2Z

Proposed
----------

Category Difference	£
Health and Safety	£ 40,062
Socio-Economic	£ 2,888,806
Environmental	£ 8,363,508
Wider Economic and Engineering	£ 14,554,039

Category Difference	%
Health and Safety	-100%
Socio-Economic	-100%
Environmental	-2710%
Wider Economic and Engineering	-100%

Impact Level Difference	£
Impact 1	£ 27,898
Impact 2	£ 1,924
Impact 3	£ 10,241
Impact 4	£ 183,637
Impact 5	£ -
Impact 6	£ 413,126
Impact 7	£ 280,475
Impact 8	£ 2,007,847
Impact 9	£ 3,720
Impact 10	£ 291,407
Impact 11	£ 17,157
Impact 12	£ 35
Impact 13	£ 8,346,316
Impact 14	£ 4,407,858

Category Difference
Health and Safety
Socio-Economic
Environmental
Wider Economic and Engineering

Category Difference
Health and Safety
Socio-Economic
Environmental
Wider Economic and Engineering

Impact Level Difference
Impact 1
Impact 2
Impact 3
Impact 4
Impact 5
Impact 6
Impact 7
Impact 8
Impact 9
Impact 10
Impact 11
Impact 12
Impact 13
Impact 14

Impact 15	£ 853,785
Impact 16	£ -
Impact 17	£ 922,790
Impact 18	£ 23,290

Impact 15	
Impact 16	
Impact 17	
Impact 18	

Impact Level Difference	%
Impact 1	-100%
Impact 2	-100%
Impact 3	-100%
Impact 4	-100%
Impact 5	#DIV/0!
Impact 6	-100%
Impact 7	-100%
Impact 8	-100%
Impact 9	-100%
Impact 10	-100%
Impact 11	-100%
Impact 12	-100%
Impact 13	-100%
Impact 14	-100%
Impact 15	-100%
Impact 16	#DIV/0!
Impact 17	-100%
Impact 18	-100%

Impact Level Difference	
Impact 1	
Impact 2	
Impact 3	
Impact 4	
Impact 5	
Impact 6	
Impact 7	
Impact 8	
Impact 9	
Impact 10	
Impact 11	
Impact 12	
Impact 13	
Impact 14	
Impact 15	
Impact 16	
Impact 17	
Impact 18	

Confidential

Option 2AA

Net Change	
£	27,898
£	1,924
£	10,241
£	183,637
£	-
£	413,126
£	280,475
£	2,007,847
£	3,720
£	291,407
£	17,157
£	35
£	8,346,316
£	4,407,858
£	853,785
£	-
£	922,790
£	23,290
£	17,791,507

Proposed	Net Change
	£ 27,898
	£ 1,924
	£ 10,241
	£ 183,637
	£ -
	£ 413,126
	£ 280,475
	£ 2,007,847
	£ 3,720
	£ 291,407
	£ 17,157
	£ 35
	£ 8,346,316
	£ 4,407,858
	£ 853,785
	£ -
	£ 922,790
	£ 23,290
	£ 17,791,507

£	
£	40,062
£	2,888,806
£	8,363,508
£	14,554,039

Category Difference	£
Health and Safety	£ 40,062
Socio-Economic	£ 2,888,806
Environmental	£ 8,363,508
Wider Economic and Engineering	£ 14,554,039

%	
	-100%
	-100%
	-2710%
	-100%

Category Difference	%
Health and Safety	-100%
Socio-Economic	-100%
Environmental	-2710%
Wider Economic and Engineering	-100%

£	
£	27,898
£	1,924
£	10,241
£	183,637
£	-
£	413,126
£	280,475
£	2,007,847
£	3,720
£	291,407
£	17,157
£	35
£	8,346,316
£	4,407,858

Impact Level Difference	£
Impact 1	£ 27,898
Impact 2	£ 1,924
Impact 3	£ 10,241
Impact 4	£ 183,637
Impact 5	£ -
Impact 6	£ 413,126
Impact 7	£ 280,475
Impact 8	£ 2,007,847
Impact 9	£ 3,720
Impact 10	£ 291,407
Impact 11	£ 17,157
Impact 12	£ 35
Impact 13	£ 8,346,316
Impact 14	£ 4,407,858

£	853,785
£	-
£	922,790
£	23,290

Impact 15	£	853,785
Impact 16	£	-
Impact 17	£	922,790
Impact 18	£	23,290

%
-100%
-100%
-100%
-100%
#DIV/0!
-100%
-100%
-100%
-100%
-100%
-100%
-100%
-100%
-100%
-100%
-100%
#DIV/0!
-100%
-100%

Impact Level Difference	%
Impact 1	-100%
Impact 2	-100%
Impact 3	-100%
Impact 4	-100%
Impact 5	#DIV/0!
Impact 6	-100%
Impact 7	-100%
Impact 8	-100%
Impact 9	-100%
Impact 10	-100%
Impact 11	-100%
Impact 12	-100%
Impact 13	-100%
Impact 14	-100%
Impact 15	-100%
Impact 16	#DIV/0!
Impact 17	-100%
Impact 18	-100%

Confidential

## Option 2AB

Proposed	Net Change
	£ 27,898
	£ 1,924
	£ 10,241
	£ 183,637
	£ -
	£ 413,126
	£ 280,475
	£ 2,007,847
	£ 3,720
	£ 291,407
	£ 17,157
	£ 35
	£ 8,346,316
	£ 4,407,858
	£ 853,785
	£ -
	£ 922,790
	£ 23,290
	£ 17,791,507

Category Difference	£
Health and Safety	£ 40,062
Socio-Economic	£ 2,888,806
Environmental	£ 8,363,508
Wider Economic and Engineering	£ 14,554,039

Category Difference	%
Health and Safety	-100%
Socio-Economic	-100%
Environmental	-2710%
Wider Economic and Engineering	-100%

Impact Level Difference	£
Impact 1	£ 27,898
Impact 2	£ 1,924
Impact 3	£ 10,241
Impact 4	£ 183,637
Impact 5	£ -
Impact 6	£ 413,126
Impact 7	£ 280,475
Impact 8	£ 2,007,847
Impact 9	£ 3,720
Impact 10	£ 291,407
Impact 11	£ 17,157
Impact 12	£ 35
Impact 13	£ 8,346,316
Impact 14	£ 4,407,858

Impact 15	£ 853,785
Impact 16	£ -
Impact 17	£ 922,790
Impact 18	£ 23,290

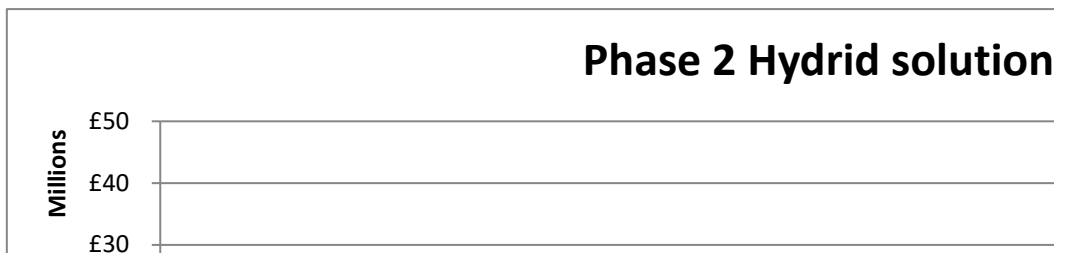
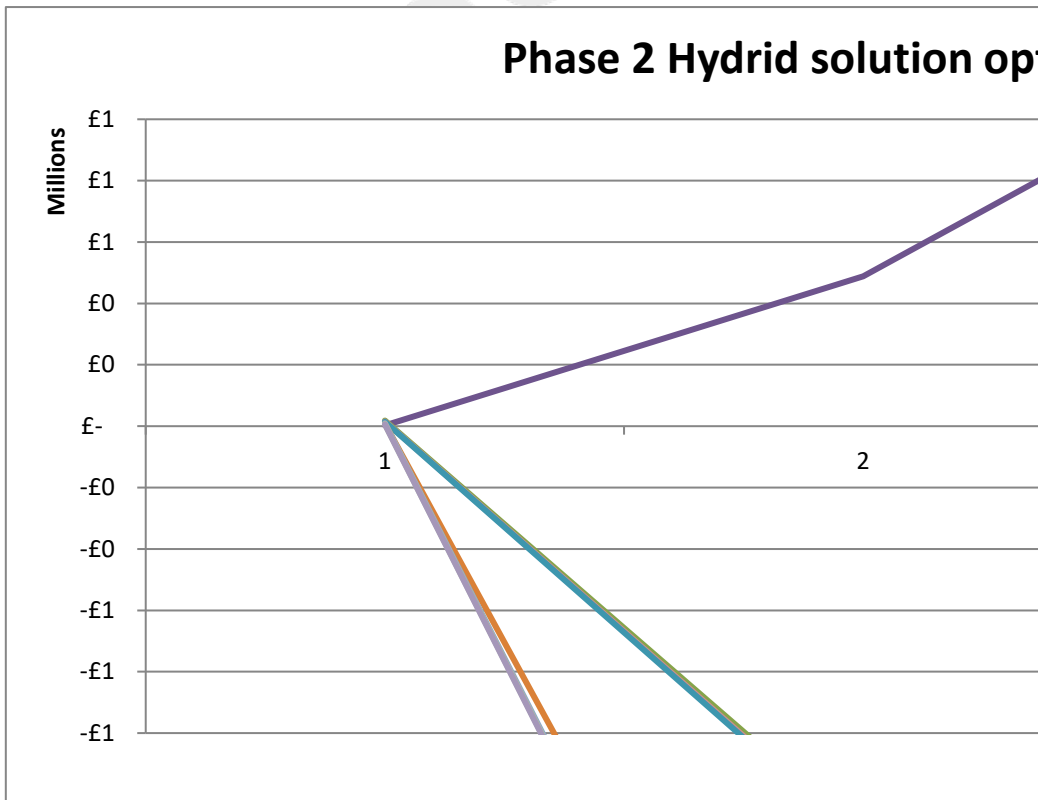
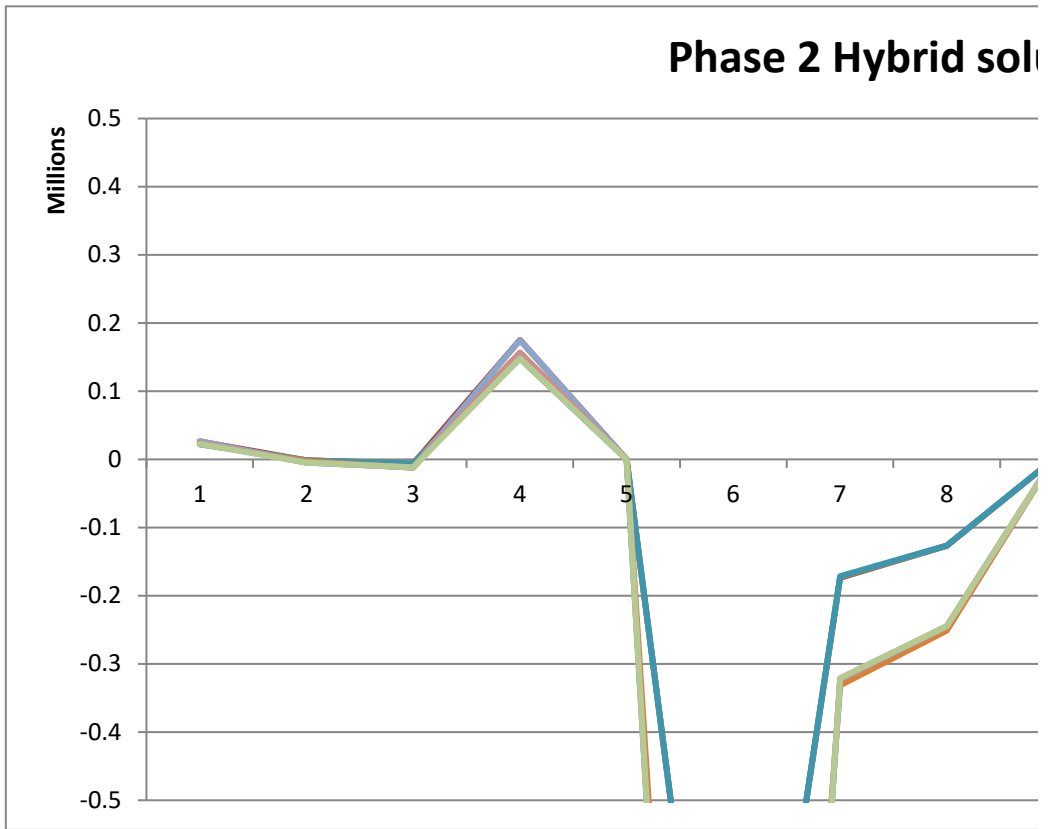
Impact Level Difference	%
Impact 1	-100%
Impact 2	-100%
Impact 3	-100%
Impact 4	-100%
Impact 5	#DIV/0!
Impact 6	-100%
Impact 7	-100%
Impact 8	-100%
Impact 9	-100%
Impact 10	-100%
Impact 11	-100%
Impact 12	-100%
Impact 13	-100%
Impact 14	-100%
Impact 15	-100%
Impact 16	#DIV/0!
Impact 17	-100%
Impact 18	-100%

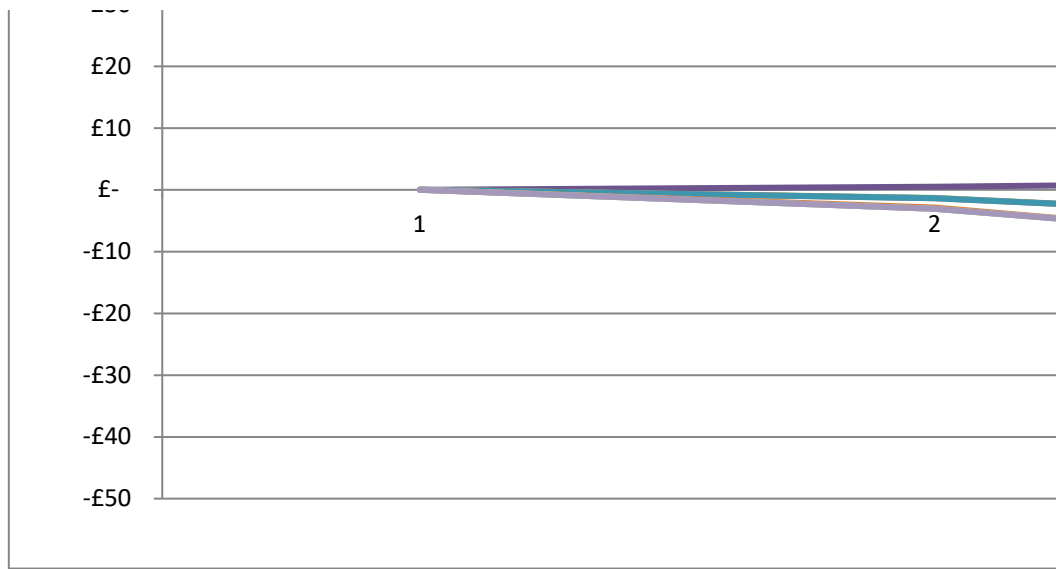
Confidential





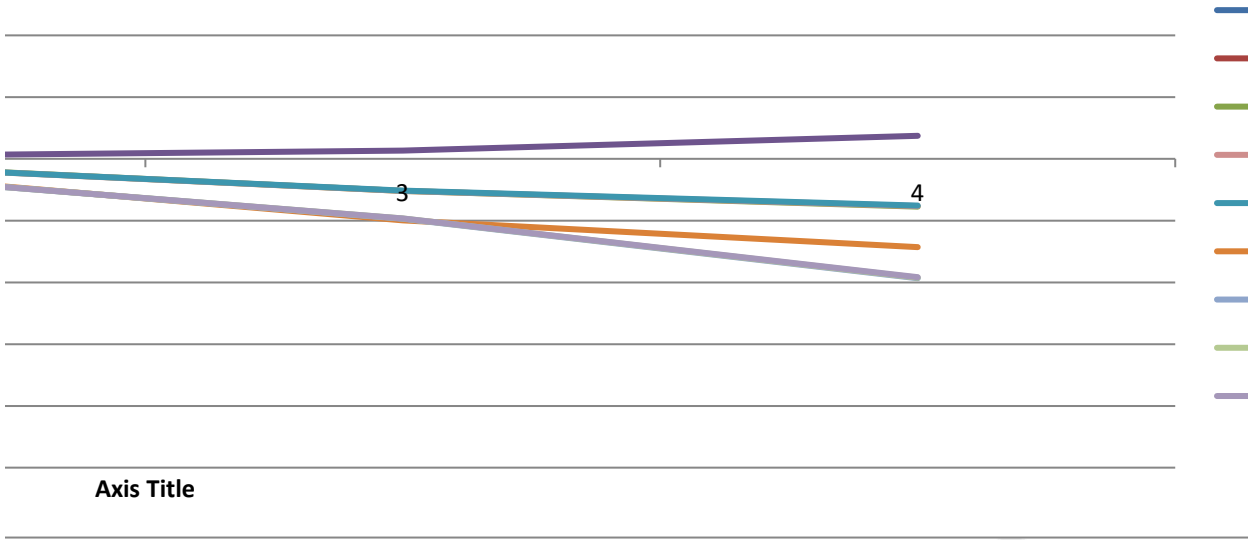






Confidential





Confidential

Confidential



- Series2
- Series3
- Series4
- Series5
- Series6
- Series7
- Series8
- Series9
- Series10

Confidential



Length	#REF!
Category	Number
●	Impact 1
●	Impact 2
●	Impact 3
●	Impact 4
●	Impact 5
●	Impact 6
●	Impact 7
●	Impact 8
●	Impact 9
●	Impact 10
●	Impact 11
●	Impact 12
●	Impact 13
●	Impact 14
●	Impact 15
●	Impact 16
●	Impact 17
●	Impact 18

Confidential

Category	Number
●	Impact 1
●	Impact 2
●	Impact 3
●	Impact 4
●	Impact 5
●	Impact 6
●	Impact 7
●	Impact 8
●	Impact 9
●	Impact 10
●	Impact 11
●	Impact 12
●	Impact 13
●	Impact 14

- Impact 15
- Impact 16
- Impact 17
- Impact 18

- Impact 1
- Impact 2
- Impact 3
- Impact 4
- Impact 5
- Impact 6
- Impact 7
- Impact 8
- Impact 9
- Impact 10
- Impact 11
- Impact 12
- Impact 13
- Impact 14
- Impact 15
- Impact 16
- Impact 17
- Impact 18

Confidential

Description
-------------

<p>Decreased health and safety risk to marine vessel operators from cable snagging</p> <p>Change in health and safety risk to cable laying vessel operators</p> <p>Increased health costs due to increase in fuel poverty rates</p> <p>Decreased damage costs to marine vessel operators from cable snagging</p> <p>Decreased risk of energy outages for island communities due to lower fault rates</p> <p>Increased distribution costs leading to lower renewable generation on islands and lower Gross Value Added (GVA)</p> <p>Increased cost of fuel poverty eradication programme due to higher fuel bills</p> <p>Increased cost to fishing operators due to loss of access to fishing grounds during cable installation</p> <p>Decreased risk of energy outages for renewable generators due to lower fault rates</p> <p>Increased distribution costs leading to lower renewable generation on islands and higher Greenhouse Gas (GHG) emissions</p> <p>Change in GHG emissions from use of backup diesel generators</p> <p>Change in costs to seabed and marine environment</p> <p>Increased installation costs associated with protection</p> <p>Change in repair costs</p> <p>Increased cost of decommissioning associated with protection</p> <p>Decreased risk of outage charges due to lower fault rates</p> <p>Increased cost of maintenance surveys associated with protection</p> <p>Change in use costs of using backup diesel generators</p>
--

<b>Net Present Value (NPV)</b>
--------------------------------

Description
-------------

<p>Decreased health and safety risk to marine vessel operators from cable snagging</p> <p>Change in health and safety risk to cable laying vessel operators</p> <p>Increased health costs due to increase in fuel poverty rates</p> <p>Decreased damage costs to marine vessel operators from cable snagging</p> <p>Decreased risk of energy outages for island communities due to lower fault rates</p> <p>Increased distribution costs leading to lower renewable generation on islands and lower Gross Value Added (GVA)</p> <p>Increased cost of fuel poverty eradication programme due to higher fuel bills</p> <p>Increased cost to fishing operators due to loss of access to fishing grounds during cable installation</p> <p>Decreased risk of energy outages for renewable generators due to lower fault rates</p> <p>Increased distribution costs leading to lower renewable generation on islands and higher Greenhouse Gas (GHG) emissions</p> <p>Change in GHG emissions from use of backup diesel generators</p> <p>Change in costs to seabed and marine environment</p> <p>Increased installation costs associated with protection</p> <p>Change in repair costs</p>
--

Increased cost of decommissioning associated with protection  
Decreased risk of outage charges due to lower fault rates  
Increased cost of maintenance surveys associated with protection  
Change in use costs of using backup diesel generators

---

---

Decreased health and safety risk to marine vessel operators from cable snagging  
Change in health and safety risk to cable laying vessel operators  
Increased health costs due to increase in fuel poverty rates  
Decreased damage costs to marine vessel operators from cable snagging  
Decreased risk of energy outages for island communities due to lower fault rates  
Increased distribution costs leading to lower renewable generation on islands and lower Gross Value Added (GVA)  
Increased cost of fuel poverty eradication programme due to higher fuel bills  
Increased cost to fishing operators due to loss of access to fishing grounds during cable installation  
Decreased risk of energy outages for renewable generators due to lower fault rates  
Increased distribution costs leading to lower renewable generation on islands and higher Greenhouse Gas (GHG) emissions  
Change in GHG emissions from use of backup diesel generators  
Change in costs to seabed and marine environment  
Increased installation costs associated with protection  
Change in repair costs  
Increased cost of decommissioning associated with protection  
Decreased risk of outage charges due to lower fault rates  
Increased cost of maintenance surveys associated with protection  
Change in use costs of using backup diesel generators

---

---

Confidential

Surface lay

No protection	
-£	27,898
-£	1,924
-£	10,241
-£	183,637
£	-
-£	413,126
-£	280,475
-£	2,007,847
-£	3,720
-£	291,407
-£	17,157
-£	35
-£	8,346,316
-£	4,407,858
-£	853,785
£	-
-£	853,785
-£	23,290
-£	17,722,502

'A)

3) emissions

Category Difference	£
Health and Safety	-£ 40,062
Socio-Economic	-£ 2,888,806
Environmental	-£ 308,599
Wider Economic and Engineering	-£ 14,485,035

Category Difference	%
Health and Safety	100%
Socio-Economic	100%
Environmental	100%
Wider Economic and Engineering	100%

Impact Level Difference	£
Impact 1	-£ 27,898
Impact 2	-£ 1,924
Impact 3	-£ 10,241
Impact 4	-£ 183,637
Impact 5	£ -
Impact 6	-£ 413,126
Impact 7	-£ 280,475
Impact 8	-£ 2,007,847
Impact 9	-£ 3,720
Impact 10	-£ 291,407
Impact 11	-£ 17,157
Impact 12	-£ 35
Impact 13	-£ 8,346,316
Impact 14	-£ 4,407,858

'A)

3) emiss

Impact 15	-£ 853,785
Impact 16	-£ 23,290
Impact 17	£ -
Impact 18	-£ 17,722,502

Impact Level Difference		%
	Impact 1	100%
	Impact 2	100%
	Impact 3	100%
	Impact 4	100%
	Impact 5	#DIV/0!
'A)	Impact 6	100%
	Impact 7	100%
	Impact 8	100%
	Impact 9	100%
3) emiss	Impact 10	100%
	Impact 11	100%
	Impact 12	100%
	Impact 13	100%
	Impact 14	100%
	Impact 15	100%
	Impact 16	100%
	Impact 17	#DIV/0!
	Impact 18	100%

Confidential

## Option 3A

Proposed		Net Change	
-£	4,136	£	23,762
-£	2,002	-£	79
-£	10,734	-£	493
-£	27,227	£	156,410
£	-	£	-
-£	413,126	£	-
-£	293,984	-£	13,509
-£	2,009,791	-£	1,944
-£	2,768	£	952
-£	291,407	£	-
-£	18,771	-£	1,614
-£	1,864	-£	1,829
-£	8,748,309	-£	401,993
-£	3,596,411	£	811,448
-£	1,031,698	-£	177,913
£	-	£	-
-£	892,298	-£	38,512
-£	18,029	£	5,262
£	-		
-£	17,362,555	£	359,947

## Option 3B

Proposed	
-£	4,136
-£	1,530
-£	10,734
-£	27,227
£	-
-£	413,126
-£	293,984
-£	2,009,791
-£	2,388
-£	291,407
-£	18,496
-£	1,478
-£	8,748,309
-£	3,102,295
-£	1,031,698
£	-
-£	850,985
-£	15,552
£	-
-£	16,823,136

Category Difference	£
Health and Safety	£ 23,190
Socio-Economic	£ 141,909
Environmental	-£ 3,443
Wider Economic and Engineering	£ 198,291

Category Difference
Health and Safety
Socio-Economic
Environmental
Wider Economic and Engineering

Category Difference	%
Health and Safety	-76%
Socio-Economic	-5%
Environmental	1%
Wider Economic and Engineering	-1%

Category Difference
Health and Safety
Socio-Economic
Environmental
Wider Economic and Engineering

Impact Level Difference	£
Impact 1	£ 23,762
Impact 2	-£ 79
Impact 3	-£ 493
Impact 4	£ 156,410
Impact 5	£ -
Impact 6	£ -
Impact 7	-£ 13,509
Impact 8	-£ 1,944
Impact 9	£ 952
Impact 10	£ -
Impact 11	-£ 1,614
Impact 12	-£ 1,829
Impact 13	-£ 401,993
Impact 14	£ 811,448

Impact Level Difference
Impact 1
Impact 2
Impact 3
Impact 4
Impact 5
Impact 6
Impact 7
Impact 8
Impact 9
Impact 10
Impact 11
Impact 12
Impact 13
Impact 14

Impact 15	-£ 38,512
Impact 16	£ 5,262
Impact 17	£ -
Impact 18	£ 359,947

Impact 15	
Impact 16	
Impact 17	
Impact 18	

Impact Level Difference	%
Impact 1	-85%
Impact 2	4%
Impact 3	5%
Impact 4	-85%
Impact 5	#DIV/0!
Impact 6	0%
Impact 7	5%
Impact 8	0%
Impact 9	-26%
Impact 10	0%
Impact 11	9%
Impact 12	5165%
Impact 13	5%
Impact 14	-18%
Impact 15	5%
Impact 16	-23%
Impact 17	#DIV/0!
Impact 18	-2%

Impact Level Difference	
Impact 1	
Impact 2	
Impact 3	
Impact 4	
Impact 5	
Impact 6	
Impact 7	
Impact 8	
Impact 9	
Impact 10	
Impact 11	
Impact 12	
Impact 13	
Impact 14	
Impact 15	
Impact 16	
Impact 17	
Impact 18	



Option 3C

Net Change	
£	23,762
£	394
-£	493
£	156,410
£	-
£	-
-£	13,509
-£	1,944
£	1,332
£	-
-£	1,339
-£	1,442
-£	401,993
£	1,305,563
-£	177,913
£	-
£	2,801
£	7,739
£	899,366

Proposed		Net Change	
-£	6,688	£	21,209
-£	1,986	-£	62
-£	10,644	-£	403
-£	44,027	£	139,611
£	-	£	-
-£	413,126	£	-
-£	291,524	-£	11,049
-£	2,009,583	-£	1,735
-£	2,768	£	952
-£	291,407	£	-
-£	18,693	-£	1,536
-£	1,667	-£	1,632
-£	8,675,115	-£	328,799
-£	3,545,938	£	861,920
-£	1,005,484	-£	151,699
£	-	£	-
-£	892,298	-£	38,512
-£	17,954	£	5,337
£	-	£	-
-£	17,228,902	£	493,600

£	
£	23,662
£	142,290
-£	2,782
£	736,196

Category Difference		£	
Health and Safety		£	20,744
Socio-Economic		£	127,778
Environmental		-£	3,168
Wider Economic and Engineering		£	348,246

%	
-78%	
-5%	
1%	
-5%	

Category Difference		%	
Health and Safety			-69%
Socio-Economic			-4%
Environmental			1%
Wider Economic and Engineering			-3%

£	
£	23,762
£	394
-£	493
£	156,410
£	-
£	-
-£	13,509
-£	1,944
£	1,332
£	-
-£	1,339
-£	1,442
-£	401,993
£	1,305,563

Impact Level Difference		£	
Impact 1		£	21,209
Impact 2		-£	62
Impact 3		-£	403
Impact 4		£	139,611
Impact 5		£	-
Impact 6		£	-
Impact 7		-£	11,049
Impact 8		-£	1,735
Impact 9		£	952
Impact 10		£	-
Impact 11		-£	1,536
Impact 12		-£	1,632
Impact 13		-£	328,799
Impact 14		£	861,920

£	2,801
£	7,739
£	-
£	899,366

Impact 15	-£	38,512
Impact 16	£	5,337
Impact 17	£	-
Impact 18	£	493,600

%
-85%
-20%
5%
-85%
#DIV/0!
0%
5%
0%
-36%
0%
8%
4074%
5%
-30%
0%
-33%
#DIV/0!
-5%

Impact Level Difference	%
Impact 1	-76%
Impact 2	3%
Impact 3	4%
Impact 4	-76%
Impact 5	#DIV/0!
Impact 6	0%
Impact 7	4%
Impact 8	0%
Impact 9	-26%
Impact 10	0%
Impact 11	9%
Impact 12	4610%
Impact 13	4%
Impact 14	-20%
Impact 15	5%
Impact 16	-23%
Impact 17	#DIV/0!
Impact 18	-3%

Confidential

## Option 3D

Proposed		Net Change	
-£	6,323	£	21,575
-£	2,560	-£	636
-£	13,573	-£	3,332
-£	39,827	£	143,810
£	-	£	-
-£	1,027,211	-£	614,085
-£	371,733	-£	91,259
-£	2,060,713	-£	52,866
-£	2,748	£	973
-£	759,003	-£	467,597
-£	42,024	-£	24,867
-£	1,790	-£	1,755
-£	11,061,973	-£	2,715,657
-£	4,234,376	£	173,482
-£	1,034,402	-£	180,617
£	-	£	-
-£	892,298	-£	38,512
-£	40,361	-£	17,071
£	-		
-£	21,590,914	-£	3,868,412

## Option 3E

Proposed	
-£	6,323
-£	2,083
-£	13,573
-£	39,827
£	-
-£	1,027,211
-£	371,733
-£	2,060,713
-£	2,370
-£	759,003
-£	41,408
-£	1,420
-£	11,061,973
-£	3,652,610
-£	1,034,402
£	-
-£	850,985
-£	34,816
£	-
-£	20,960,450

Category Difference	£
Health and Safety	£ 17,607
Socio-Economic	-£ 613,426
Environmental	-£ 494,218
Wider Economic and Engineering	-£ 2,778,375

Category Difference
Health and Safety
Socio-Economic
Environmental
Wider Economic and Engineering

Category Difference	%
Health and Safety	-53%
Socio-Economic	21%
Environmental	159%
Wider Economic and Engineering	20%

Category Difference
Health and Safety
Socio-Economic
Environmental
Wider Economic and Engineering

Impact Level Difference	£
Impact 1	£ 21,575
Impact 2	-£ 636
Impact 3	-£ 3,332
Impact 4	£ 143,810
Impact 5	£ -
Impact 6	-£ 614,085
Impact 7	-£ 91,259
Impact 8	-£ 52,866
Impact 9	£ 973
Impact 10	-£ 467,597
Impact 11	-£ 24,867
Impact 12	-£ 1,755
Impact 13	-£ 2,715,657
Impact 14	£ 173,482

Impact Level Difference
Impact 1
Impact 2
Impact 3
Impact 4
Impact 5
Impact 6
Impact 7
Impact 8
Impact 9
Impact 10
Impact 11
Impact 12
Impact 13
Impact 14

Impact 15	-£ 38,512
Impact 16	-£ 17,071
Impact 17	£ -
Impact 18	-£ 3,868,412

Impact 15
Impact 16
Impact 17
Impact 18

Impact Level Difference	%
Impact 1	-77%
Impact 2	33%
Impact 3	33%
Impact 4	-78%
Impact 5	#DIV/0!
Impact 6	149%
Impact 7	33%
Impact 8	3%
Impact 9	-26%
Impact 10	160%
Impact 11	145%
Impact 12	4957%
Impact 13	33%
Impact 14	-4%
Impact 15	5%
Impact 16	73%
Impact 17	#DIV/0!
Impact 18	22%

Impact Level Difference
Impact 1
Impact 2
Impact 3
Impact 4
Impact 5
Impact 6
Impact 7
Impact 8
Impact 9
Impact 10
Impact 11
Impact 12
Impact 13
Impact 14
Impact 15
Impact 16
Impact 17
Impact 18

Option 3F

Net Change	
£	21,575
-£	160
-£	3,332
£	143,810
£	-
-£	614,085
-£	91,259
-£	52,866
£	1,350
-£	467,597
-£	24,251
-£	1,385
-£	2,715,657
£	755,248
-£	180,617
£	-
£	2,801
-£	11,526
-£	3,237,948

Proposed	Net Change
-£	4,136
-£	2,091
-£	10,734
-£	27,227
£	-
-£	413,126
-£	293,984
-£	2,009,791
-£	3,720
-£	291,407
-£	17,848
-£	1,988
-£	8,748,309
-£	4,833,275
-£	1,031,698
£	-
-£	922,790
-£	24,229
£	-
-£	18,636,355

£	
£	18,083
-£	613,048
-£	493,233
-£	2,149,751

Category Difference	£
Health and Safety	£ 23,101
Socio-Economic	£ 140,957
Environmental	-£ 2,644
Wider Economic and Engineering	-£ 1,075,267

%	
-55%	
21%	
159%	
16%	

Category Difference	%
Health and Safety	-76%
Socio-Economic	-5%
Environmental	1%
Wider Economic and Engineering	8%

£	
£	21,575
-£	160
-£	3,332
£	143,810
£	-
-£	614,085
-£	91,259
-£	52,866
£	1,350
-£	467,597
-£	24,251
-£	1,385
-£	2,715,657
£	755,248

Impact Level Difference	£
Impact 1	£ 23,762
Impact 2	-£ 167
Impact 3	-£ 493
Impact 4	£ 156,410
Impact 5	£ -
Impact 6	£ -
Impact 7	-£ 13,509
Impact 8	-£ 1,944
Impact 9	£ -
Impact 10	£ -
Impact 11	-£ 691
Impact 12	-£ 1,953
Impact 13	-£ 401,993
Impact 14	-£ 425,417

£	2,801
-£	11,526
£	-
-£	3,237,948

Impact 15	-£ 69,005
Impact 16	-£ 939
Impact 17	£ -
Impact 18	-£ 913,853

%
-77%
8%
33%
-78%
#DIV/0!
149%
33%
3%
-36%
160%
141%
3912%
33%
-17%
0%
49%
#DIV/0!
18%

Impact Level Difference	%
Impact 1	-85%
Impact 2	9%
Impact 3	5%
Impact 4	-85%
Impact 5	#DIV/0!
Impact 6	0%
Impact 7	5%
Impact 8	0%
Impact 9	0%
Impact 10	0%
Impact 11	4%
Impact 12	5517%
Impact 13	5%
Impact 14	10%
Impact 15	8%
Impact 16	4%
Impact 17	#DIV/0!
Impact 18	5%

Confidential

Option 3G

Proposed		Net Change	
-£	6,323	£	21,575
-£	2,649	-£	725
-£	13,573	-£	3,332
-£	39,827	£	143,810
£	-	£	-
-£	1,027,211	-£	614,085
-£	371,733	-£	91,259
-£	2,060,713	-£	52,866
-£	3,692	£	28
-£	759,003	-£	467,597
-£	39,958	-£	22,801
-£	1,910	-£	1,874
-£	11,061,973	-£	2,715,657
-£	5,690,647	-£	1,282,789
-£	1,034,402	-£	180,617
£	-	£	-
-£	922,790	-£	69,005
-£	54,242	-£	30,952
£	-		
-£	23,090,646	-£	5,368,144

Category Difference	£
Health and Safety	£ 17,518
Socio-Economic	-£ 614,371
Environmental	-£ 492,272
Wider Economic and Engineering	-£ 4,279,019

Category Difference	%
Health and Safety	-53%
Socio-Economic	21%
Environmental	159%
Wider Economic and Engineering	31%

Impact Level Difference	£
Impact 1	£ 21,575
Impact 2	-£ 725
Impact 3	-£ 3,332
Impact 4	£ 143,810
Impact 5	£ -
Impact 6	-£ 614,085
Impact 7	-£ 91,259
Impact 8	-£ 52,866
Impact 9	£ 28
Impact 10	-£ 467,597
Impact 11	-£ 22,801
Impact 12	-£ 1,874
Impact 13	-£ 2,715,657
Impact 14	-£ 1,282,789

Impact 15	-£	69,005
Impact 16	-£	30,952
Impact 17	£	-
Impact 18	-£	5,368,144

Impact Level Difference	%
Impact 1	-77%
Impact 2	38%
Impact 3	33%
Impact 4	-78%
Impact 5	#DIV/0!
Impact 6	149%
Impact 7	33%
Impact 8	3%
Impact 9	-1%
Impact 10	160%
Impact 11	133%
Impact 12	5294%
Impact 13	33%
Impact 14	29%
Impact 15	8%
Impact 16	133%
Impact 17	#DIV/0!
Impact 18	30%





Impact 15	£ 853,785
Impact 16	£ 23,290
Impact 17	£ -
Impact 18	£17,722,502

Impact 15
Impact 16
Impact 17
Impact 18

Impact Level Difference	%
Impact 1	-100%
Impact 2	-100%
Impact 3	-100%
Impact 4	-100%
Impact 5	#DIV/0!
Impact 6	-100%
Impact 7	-100%
Impact 8	-100%
Impact 9	-100%
Impact 10	-100%
Impact 11	-100%
Impact 12	-100%
Impact 13	-100%
Impact 14	-100%
Impact 15	-100%
Impact 16	-100%
Impact 17	#DIV/0!
Impact 18	-100%

Impact Level Difference
Impact 1
Impact 2
Impact 3
Impact 4
Impact 5
Impact 6
Impact 7
Impact 8
Impact 9
Impact 10
Impact 11
Impact 12
Impact 13
Impact 14
Impact 15
Impact 16
Impact 17
Impact 18

Confidential

Option 3J

Net Change	
£	27,898
£	1,924
£	10,241
£	183,637
£	-
£	413,126
£	280,475
£	2,007,847
£	3,720
£	291,407
£	17,157
£	35
£	8,346,316
£	4,407,858
£	853,785
£	-
£	853,785
£	23,290
£	17,722,502

Proposed	Net Change
	£ 27,898
	£ 1,924
	£ 10,241
	£ 183,637
	£ -
	£ 413,126
	£ 280,475
	£ 2,007,847
	£ 3,720
	£ 291,407
	£ 17,157
	£ 35
	£ 8,346,316
	£ 4,407,858
	£ 853,785
	£ -
	£ 853,785
	£ 23,290
	£ 17,722,502

£	
£	40,062
£	2,888,806
£	308,599
£	14,485,035

Category Difference	£
Health and Safety	£ 40,062
Socio-Economic	£ 2,888,806
Environmental	£ 308,599
Wider Economic and Engineering	£ 14,485,035

%	
	-205%
	-100%
	-100%
	-113%

Category Difference	%
Health and Safety	-205%
Socio-Economic	-100%
Environmental	-100%
Wider Economic and Engineering	-113%

£	
£	27,898
£	1,924
£	10,241
£	183,637
£	-
£	413,126
£	280,475
£	2,007,847
£	3,720
£	291,407
£	17,157
£	35
£	8,346,316
£	4,407,858

Impact Level Difference	£
Impact 1	£ 27,898
Impact 2	£ 1,924
Impact 3	£ 10,241
Impact 4	£ 183,637
Impact 5	£ -
Impact 6	£ 413,126
Impact 7	£ 280,475
Impact 8	£ 2,007,847
Impact 9	£ 3,720
Impact 10	£ 291,407
Impact 11	£ 17,157
Impact 12	£ 35
Impact 13	£ 8,346,316
Impact 14	£ 4,407,858

£	853,785
£	23,290
£	-
£	17,722,502

Impact 15	£	853,785
Impact 16	£	23,290
Impact 17	£	-
Impact 18	£	17,722,502

%
-100%
-100%
-100%
-100%
#DIV/0!
-100%
-100%
-100%
-100%
-100%
-100%
-100%
-100%
-100%
-100%
-100%
-100%
#DIV/0!
-100%

Impact Level Difference	%
Impact 1	-100%
Impact 2	-100%
Impact 3	-100%
Impact 4	-100%
Impact 5	#DIV/0!
Impact 6	-100%
Impact 7	-100%
Impact 8	-100%
Impact 9	-100%
Impact 10	-100%
Impact 11	-100%
Impact 12	-100%
Impact 13	-100%
Impact 14	-100%
Impact 15	-100%
Impact 16	-100%
Impact 17	#DIV/0!
Impact 18	-100%

Confidential



Impact 15	£ 853,785
Impact 16	£ 23,290
Impact 17	£ -
Impact 18	#####

Impact 15	
Impact 16	
Impact 17	
Impact 18	

Impact Level Difference	%
Impact 1	-100%
Impact 2	-100%
Impact 3	-100%
Impact 4	-100%
Impact 5	#DIV/0!
Impact 6	-100%
Impact 7	-100%
Impact 8	-100%
Impact 9	-100%
Impact 10	-100%
Impact 11	-100%
Impact 12	-100%
Impact 13	-100%
Impact 14	-100%
Impact 15	-100%
Impact 16	-100%
Impact 17	#DIV/0!
Impact 18	-100%

Impact Level Difference	
Impact 1	
Impact 2	
Impact 3	
Impact 4	
Impact 5	
Impact 6	
Impact 7	
Impact 8	
Impact 9	
Impact 10	
Impact 11	
Impact 12	
Impact 13	
Impact 14	
Impact 15	
Impact 16	
Impact 17	
Impact 18	

Confidential

Net Change	
£	27,898
£	1,924
£	10,241
£	183,637
£	-
£	413,126
£	280,475
£	2,007,847
£	3,720
£	291,407
£	17,157
£	35
£	8,346,316
£	4,407,858
£	853,785
£	-
£	853,785
£	23,290
£	17,722,502

Proposed	Net Change
	£ 27,898
	£ 1,924
	£ 10,241
	£ 183,637
	£ -
	£ 413,126
	£ 280,475
	£ 2,007,847
	£ 3,720
	£ 291,407
	£ 17,157
	£ 35
	£ 8,346,316
	£ 4,407,858
	£ 853,785
	£ -
	£ 853,785
	£ 23,290
£	-
	£ 17,722,502

£	
£	40,062
£	2,888,806
£	308,599
£	14,485,035

Category Difference	£
Health and Safety	£ 40,062
Socio-Economic	£ 2,888,806
Environmental	£ 308,599
Wider Economic and Engineering	£ 14,485,035

%	
	-205%
	-100%
	-100%
	-113%

Category Difference	%
Health and Safety	-205%
Socio-Economic	-100%
Environmental	-100%
Wider Economic and Engineering	-113%

£	
£	27,898
£	1,924
£	10,241
£	183,637
£	-
£	413,126
£	280,475
£	2,007,847
£	3,720
£	291,407
£	17,157
£	35
£	8,346,316
£	4,407,858

Impact Level Difference	£
Impact 1	£ 27,898
Impact 2	£ 1,924
Impact 3	£ 10,241
Impact 4	£ 183,637
Impact 5	£ -
Impact 6	£ 413,126
Impact 7	£ 280,475
Impact 8	£ 2,007,847
Impact 9	£ 3,720
Impact 10	£ 291,407
Impact 11	£ 17,157
Impact 12	£ 35
Impact 13	£ 8,346,316
Impact 14	£ 4,407,858

£ 853,785
£ 23,290
£ -
£ 17,722,502

Impact 15	£ 853,785
Impact 16	£ 23,290
Impact 17	£ -
Impact 18	£ 17,722,502

%
-100%
-100%
-100%
-100%
#DIV/0!
-100%
-100%
-100%
-100%
-100%
-100%
-100%
-100%
-100%
-100%
-100%
-100%
#DIV/0!
-100%

Impact Level Difference	%
Impact 1	-100%
Impact 2	-100%
Impact 3	-100%
Impact 4	-100%
Impact 5	#DIV/0!
Impact 6	-100%
Impact 7	-100%
Impact 8	-100%
Impact 9	-100%
Impact 10	-100%
Impact 11	-100%
Impact 12	-100%
Impact 13	-100%
Impact 14	-100%
Impact 15	-100%
Impact 16	-100%
Impact 17	#DIV/0!
Impact 18	-100%

Confidential





Impact 15	£ 853,785
Impact 16	£ 23,290
Impact 17	£ -
Impact 18	#####

Impact 15
Impact 16
Impact 17
Impact 18

Impact Level Difference	%
Impact 1	-100%
Impact 2	-100%
Impact 3	-100%
Impact 4	-100%
Impact 5	#DIV/0!
Impact 6	-100%
Impact 7	-100%
Impact 8	-100%
Impact 9	-100%
Impact 10	-100%
Impact 11	-100%
Impact 12	-100%
Impact 13	-100%
Impact 14	-100%
Impact 15	-100%
Impact 16	-100%
Impact 17	#DIV/0!
Impact 18	-100%

Impact Level Difference
Impact 1
Impact 2
Impact 3
Impact 4
Impact 5
Impact 6
Impact 7
Impact 8
Impact 9
Impact 10
Impact 11
Impact 12
Impact 13
Impact 14
Impact 15
Impact 16
Impact 17
Impact 18

Confidential

Net Change	
£	27,898
£	1,924
£	10,241
£	183,637
£	-
£	413,126
£	280,475
£	2,007,847
£	3,720
£	291,407
£	17,157
£	35
£	8,346,316
£	4,407,858
£	853,785
£	-
£	853,785
£	23,290
£	17,722,502

Proposed	Net Change
	£ 27,898
	£ 1,924
	£ 10,241
	£ 183,637
	£ -
	£ 413,126
	£ 280,475
	£ 2,007,847
	£ 3,720
	£ 291,407
	£ 17,157
	£ 35
	£ 8,346,316
	£ 4,407,858
	£ 853,785
	£ -
	£ 853,785
	£ 23,290
£	-
	£ 17,722,502

£	
£	40,062
£	2,888,806
£	308,599
£	14,485,035

Category Difference	£
Health and Safety	£ 40,062
Socio-Economic	£ 2,888,806
Environmental	£ 308,599
Wider Economic and Engineering	£ 14,485,035

%	
	-205%
	-100%
	-100%
	-113%

Category Difference	%
Health and Safety	-205%
Socio-Economic	-100%
Environmental	-100%
Wider Economic and Engineering	-113%

£	
£	27,898
£	1,924
£	10,241
£	183,637
£	-
£	413,126
£	280,475
£	2,007,847
£	3,720
£	291,407
£	17,157
£	35
£	8,346,316
£	4,407,858

Impact Level Difference	£
Impact 1	£ 27,898
Impact 2	£ 1,924
Impact 3	£ 10,241
Impact 4	£ 183,637
Impact 5	£ -
Impact 6	£ 413,126
Impact 7	£ 280,475
Impact 8	£ 2,007,847
Impact 9	£ 3,720
Impact 10	£ 291,407
Impact 11	£ 17,157
Impact 12	£ 35
Impact 13	£ 8,346,316
Impact 14	£ 4,407,858

£ 853,785
£ 23,290
£ -
£ 17,722,502

Impact 15	£ 853,785
Impact 16	£ 23,290
Impact 17	£ -
Impact 18	£ 17,722,502

%
-100%
-100%
-100%
-100%
#DIV/0!
-100%
-100%
-100%
-100%
-100%
-100%
-100%
-100%
-100%
-100%
-100%
-100%
#DIV/0!
-100%

Impact Level Difference	%
Impact 1	-100%
Impact 2	-100%
Impact 3	-100%
Impact 4	-100%
Impact 5	#DIV/0!
Impact 6	-100%
Impact 7	-100%
Impact 8	-100%
Impact 9	-100%
Impact 10	-100%
Impact 11	-100%
Impact 12	-100%
Impact 13	-100%
Impact 14	-100%
Impact 15	-100%
Impact 16	-100%
Impact 17	#DIV/0!
Impact 18	-100%

Confidential



Impact 15	£ 853,785
Impact 16	£ 23,290
Impact 17	£ -
Impact 18	£ 17,722,502

Impact 15
Impact 16
Impact 17
Impact 18

Impact Level Difference	%
Impact 1	-100%
Impact 2	-100%
Impact 3	-100%
Impact 4	-100%
Impact 5	#DIV/0!
Impact 6	-100%
Impact 7	-100%
Impact 8	-100%
Impact 9	-100%
Impact 10	-100%
Impact 11	-100%
Impact 12	-100%
Impact 13	-100%
Impact 14	-100%
Impact 15	-100%
Impact 16	-100%
Impact 17	#DIV/0!
Impact 18	-100%

Impact Level Difference
Impact 1
Impact 2
Impact 3
Impact 4
Impact 5
Impact 6
Impact 7
Impact 8
Impact 9
Impact 10
Impact 11
Impact 12
Impact 13
Impact 14
Impact 15
Impact 16
Impact 17
Impact 18

Confidential

Net Change
£ 27,898
£ 1,924
£ 10,241
£ 183,637
£ -
£ 413,126
£ 280,475
£ 2,007,847
£ 3,720
£ 291,407
£ 17,157
£ 35
£ 8,346,316
£ 4,407,858
£ 853,785
£ -
£ 853,785
£ 23,290
£17,722,502

Proposed	Net Change
	£ 27,898
	£ 1,924
	£ 10,241
	£ 183,637
	£ -
	£ 413,126
	£ 280,475
	£ 2,007,847
	£ 3,720
	£ 291,407
	£ 17,157
	£ 35
	£ 8,346,316
	£ 4,407,858
	£ 853,785
	£ -
	£ 853,785
	£ 23,290
£ -	£ 17,722,502

£
£ 40,062
£ 2,888,806
£ 308,599
£14,485,035

Category Difference	£
Health and Safety	£ 40,062
Socio-Economic	£ 2,888,806
Environmental	£ 308,599
Wider Economic and Engineering	£ 14,485,035

%
-205%
-100%
-100%
-113%

Category Difference	%
Health and Safety	-205%
Socio-Economic	-100%
Environmental	-100%
Wider Economic and Engineering	-113%

£
£ 27,898
£ 1,924
£ 10,241
£ 183,637
£ -
£ 413,126
£ 280,475
£ 2,007,847
£ 3,720
£ 291,407
£ 17,157
£ 35
£ 8,346,316
£ 4,407,858

Impact Level Difference	£
Impact 1	£ 27,898
Impact 2	£ 1,924
Impact 3	£ 10,241
Impact 4	£ 183,637
Impact 5	£ -
Impact 6	£ 413,126
Impact 7	£ 280,475
Impact 8	£ 2,007,847
Impact 9	£ 3,720
Impact 10	£ 291,407
Impact 11	£ 17,157
Impact 12	£ 35
Impact 13	£ 8,346,316
Impact 14	£ 4,407,858

£ 853,785
£ 23,290
£ -
£17,722,502

Impact 15	£ 853,785
Impact 16	£ 23,290
Impact 17	£ -
Impact 18	£ 17,722,502

%
-100%
-100%
-100%
-100%
#DIV/0!
-100%
-100%
-100%
-100%
-100%
-100%
-100%
-100%
-100%
-100%
-100%
-100%
#DIV/0!
-100%

Impact Level Difference	%
Impact 1	-100%
Impact 2	-100%
Impact 3	-100%
Impact 4	-100%
Impact 5	#DIV/0!
Impact 6	-100%
Impact 7	-100%
Impact 8	-100%
Impact 9	-100%
Impact 10	-100%
Impact 11	-100%
Impact 12	-100%
Impact 13	-100%
Impact 14	-100%
Impact 15	-100%
Impact 16	-100%
Impact 17	#DIV/0!
Impact 18	-100%

Confidential





Impact 15	£ 853,785
Impact 16	£ 23,290
Impact 17	£ -
Impact 18	£ 17,722,502

Impact 15
Impact 16
Impact 17
Impact 18

Impact Level Difference	%
Impact 1	-100%
Impact 2	-100%
Impact 3	-100%
Impact 4	-100%
Impact 5	#DIV/0!
Impact 6	-100%
Impact 7	-100%
Impact 8	-100%
Impact 9	-100%
Impact 10	-100%
Impact 11	-100%
Impact 12	-100%
Impact 13	-100%
Impact 14	-100%
Impact 15	-100%
Impact 16	-100%
Impact 17	#DIV/0!
Impact 18	-100%

Impact Level Difference
Impact 1
Impact 2
Impact 3
Impact 4
Impact 5
Impact 6
Impact 7
Impact 8
Impact 9
Impact 10
Impact 11
Impact 12
Impact 13
Impact 14
Impact 15
Impact 16
Impact 17
Impact 18

Confidential

Net Change	
£	27,898
£	1,924
£	10,241
£	183,637
£	-
£	413,126
£	280,475
£	2,007,847
£	3,720
£	291,407
£	17,157
£	35
£	8,346,316
£	4,407,858
£	853,785
£	-
£	853,785
£	23,290
£	17,722,502

Proposed	Net Change
	£ 27,898
	£ 1,924
	£ 10,241
	£ 183,637
	£ -
	£ 413,126
	£ 280,475
	£ 2,007,847
	£ 3,720
	£ 291,407
	£ 17,157
	£ 35
	£ 8,346,316
	£ 4,407,858
	£ 853,785
	£ -
	£ 853,785
	£ 23,290
£	-
	£ 17,722,502

£	
£	40,062
£	2,888,806
£	308,599
£	14,485,035

Category Difference	£
Health and Safety	£ 40,062
Socio-Economic	£ 2,888,806
Environmental	£ 308,599
Wider Economic and Engineering	£ 14,485,035

%	
	-205%
	-100%
	-100%
	-113%

Category Difference	%
Health and Safety	-205%
Socio-Economic	-100%
Environmental	-100%
Wider Economic and Engineering	-113%

£	
£	27,898
£	1,924
£	10,241
£	183,637
£	-
£	413,126
£	280,475
£	2,007,847
£	3,720
£	291,407
£	17,157
£	35
£	8,346,316
£	4,407,858

Impact Level Difference	£
Impact 1	£ 27,898
Impact 2	£ 1,924
Impact 3	£ 10,241
Impact 4	£ 183,637
Impact 5	£ -
Impact 6	£ 413,126
Impact 7	£ 280,475
Impact 8	£ 2,007,847
Impact 9	£ 3,720
Impact 10	£ 291,407
Impact 11	£ 17,157
Impact 12	£ 35
Impact 13	£ 8,346,316
Impact 14	£ 4,407,858

£ 853,785
£ 23,290
£ -
£ 17,722,502

Impact 15	£ 853,785
Impact 16	£ 23,290
Impact 17	£ -
Impact 18	£ 17,722,502

%
-100%
-100%
-100%
-100%
#DIV/0!
-100%
-100%
-100%
-100%
-100%
-100%
-100%
-100%
-100%
-100%
-100%
-100%
#DIV/0!
-100%

Impact Level Difference	%
Impact 1	-100%
Impact 2	-100%
Impact 3	-100%
Impact 4	-100%
Impact 5	#DIV/0!
Impact 6	-100%
Impact 7	-100%
Impact 8	-100%
Impact 9	-100%
Impact 10	-100%
Impact 11	-100%
Impact 12	-100%
Impact 13	-100%
Impact 14	-100%
Impact 15	-100%
Impact 16	-100%
Impact 17	#DIV/0!
Impact 18	-100%

Confidential



Impact 15	£ 853,785
Impact 16	£ 23,290
Impact 17	£ -
Impact 18	£ 17,722,502

Impact 15
Impact 16
Impact 17
Impact 18

Impact Level Difference	%
Impact 1	-100%
Impact 2	-100%
Impact 3	-100%
Impact 4	-100%
Impact 5	#DIV/0!
Impact 6	-100%
Impact 7	-100%
Impact 8	-100%
Impact 9	-100%
Impact 10	-100%
Impact 11	-100%
Impact 12	-100%
Impact 13	-100%
Impact 14	-100%
Impact 15	-100%
Impact 16	-100%
Impact 17	#DIV/0!
Impact 18	-100%

Impact Level Difference
Impact 1
Impact 2
Impact 3
Impact 4
Impact 5
Impact 6
Impact 7
Impact 8
Impact 9
Impact 10
Impact 11
Impact 12
Impact 13
Impact 14
Impact 15
Impact 16
Impact 17
Impact 18

Confidential

Net Change	
£	27,898
£	1,924
£	10,241
£	183,637
£	-
£	413,126
£	280,475
£	2,007,847
£	3,720
£	291,407
£	17,157
£	35
£	8,346,316
£	4,407,858
£	853,785
£	-
£	853,785
£	23,290
£	17,722,502

Hidden Rows

£	
£	40,062
£	2,888,806
£	308,599
£	14,485,035

%	
	-205%
	-100%
	-100%
	-113%

£	
£	27,898
£	1,924
£	10,241
£	183,637
£	-
£	413,126
£	280,475
£	2,007,847
£	3,720
£	291,407
£	17,157
£	35
£	8,346,316
£	4,407,858

Confidential

£	853,785
£	23,290
£	-
£	17,722,502

%
-100%
-100%
-100%
-100%
#DIV/0!
-100%
-100%
-100%
-100%
-100%
-100%
-100%
-100%
-100%
-100%
-100%
#DIV/0!
-100%

Confidential