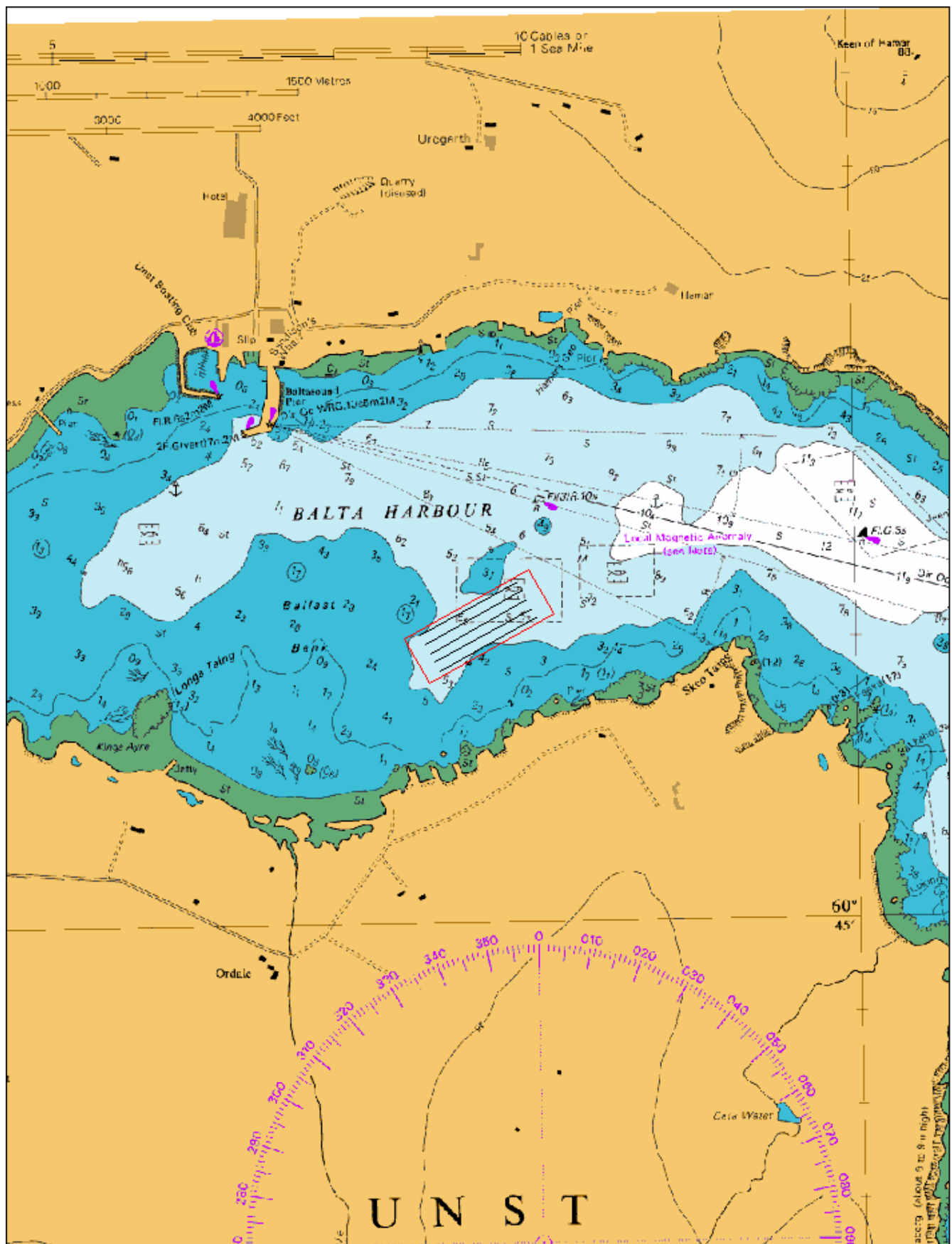


Appendix 1 West Skeo Taing OS Location Map 2018



Appendix 2 West Sk eo Taing Admiralty Chart 2018



(c) Crown Copyright/ HR Wallingford Ltd 2017. All Rights Reserved. Licence No. L0127.0001. Not to be used for navigation

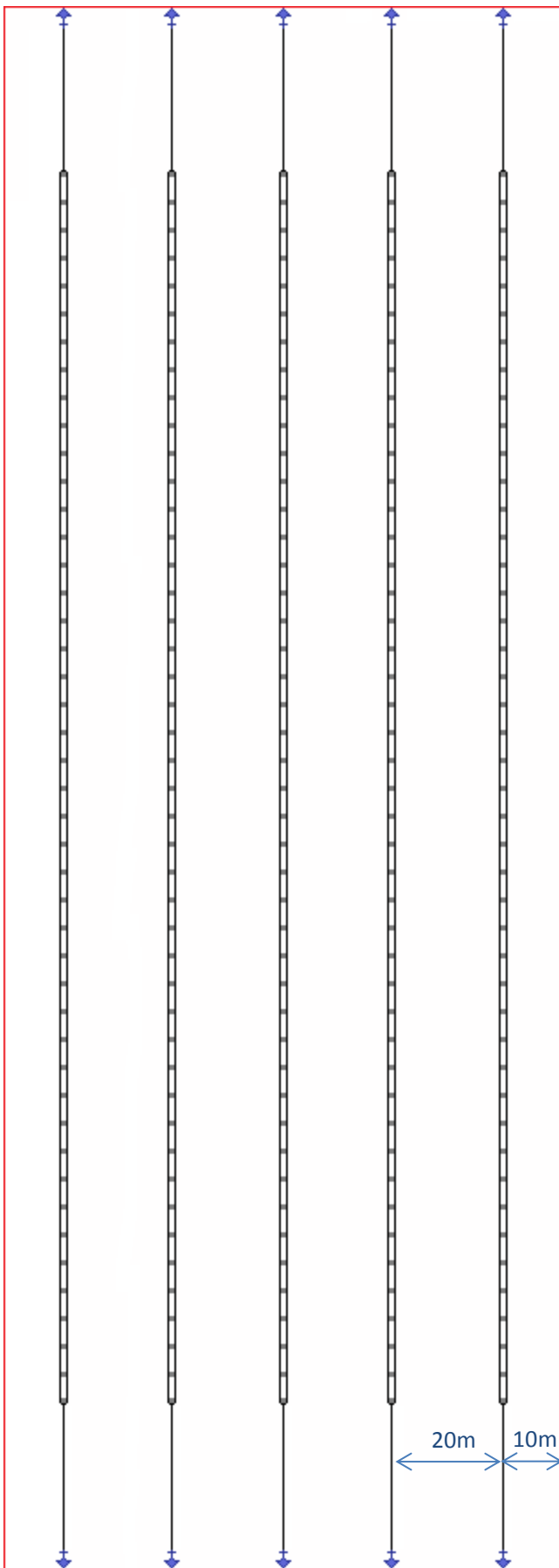


Refusing to go with the flow

- West Sk eo Taing Longlines
- ▭ West Sk eo Taing MCA

1:10,000





West Skeo Taing Site Plan



Refusing to go with the flow

ALL MOORINGS

20m x 40mm Seasteel Rope +
10m x 36mm Studlink Chain +
500kg anchor

Total horizontal length: 30m

LONGLINE SPECIFICATION

220m x 40mm Seasteel rope
280l capacity grey mussel floats
Float spacing: 5m
Dropper spacing: 0.3m

MCA Positions

1. 60° 45' 22.536" N 0° 49' 42.625" W
2. 60° 45' 19.663" N 0° 49' 39.500" W
3. 60° 45' 15.382" N 0° 49' 55.873" W
4. 60° 45' 18.252" N 0° 49' 58.998" W

Longline Containment Area

1. 60° 45' 21.794" N 0° 49' 44.084" W
2. 60° 45' 19.501" N 0° 49' 41.574" W
3. 60° 45' 16.124" N 0° 49' 54.430" W
4. 60° 45' 18.418" N 0° 49' 56.953" W

Site Centre

463848.56 E

1208590.68 N



0m 25m 50m

Figure 1. Partial underwater profile view and equipment specifications.

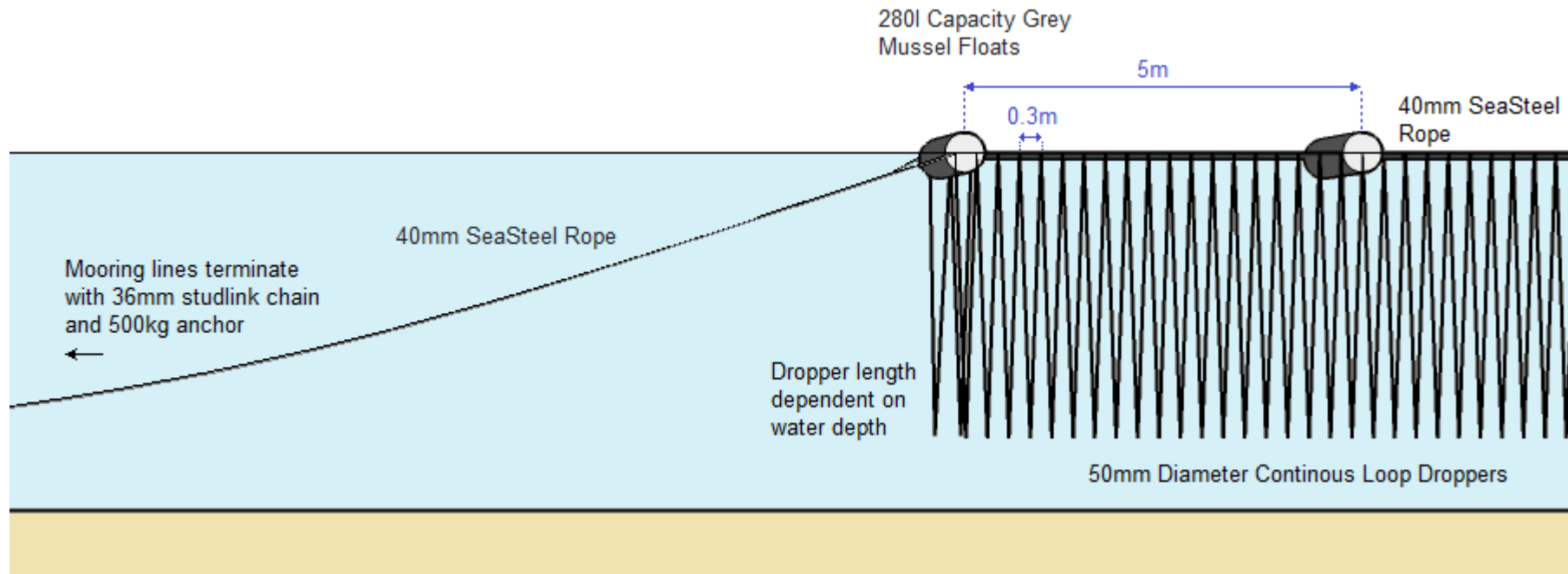


Figure 2. Simplified complete underwater profile view (not to scale).

